

ADDICTIVE DESERT DESIGNS

2007 - 2013 Toyota Tundra ADD Lite Front Bumper Installation Instructions

PREPARATION

1. Disconnect the negative terminal on the battery. Park the vehicle on level ground and set the emergency brake.
2. We recommend reading through the installation instructions in whole before performing the work.
3. Estimated Installation Time: **2 Hours**
4. You will need the following tools:
 - a. 10mm Socket
 - b. 12mm Socket
 - c. 14mm Socket
 - d. 17mm Socket
 - e. Ratchet
 - f. Cutoff Wheel

Note: this installation requires 2 people for best results

5. Included in Kit:

Stock Hardware is Reused

REMOVAL

1. From the bottom of the truck, remove any fog light/parking sensor connectors if your truck is equipped with fog lights/parking sensors, and move the wiring harness out of the way.
2. There are three 10mm bolts along the skid plate on the bottom of your truck. Remove these three bolts. (Fig A)



Fig A

3. Using a 12mm Socket, remove the 5 skid plate bolts, then remove the skid plate. Save these bolts for reuse. (Fig B)

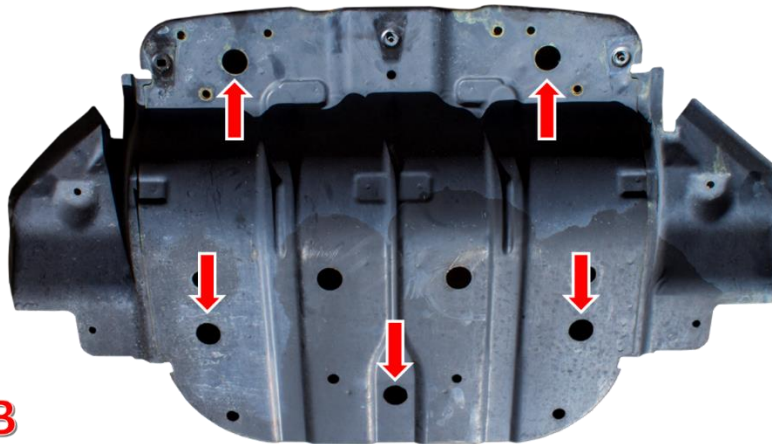


Fig B

4. There are two plastic clips per side that need to be removed. These plastic clips sit in the front lower portion of each of your wheel wells. (Fig C)



Fig C

5. If your truck has a one-piece bumper, follow this step. If your truck does not have a one-piece bumper, skip to the following step. Cut your bumper along the body line that separates the two sections of your bumper, but leave a small lip so that you can mock fit the bumper and do your final trimming when you know where the bumper will land. Refer to Fig D.



Fig D

6. Using a 14mm Socket, Remove the bumper mounting bolts. There are 8 total, 4 per side. Set these bolts aside for reuse. (Fig E)

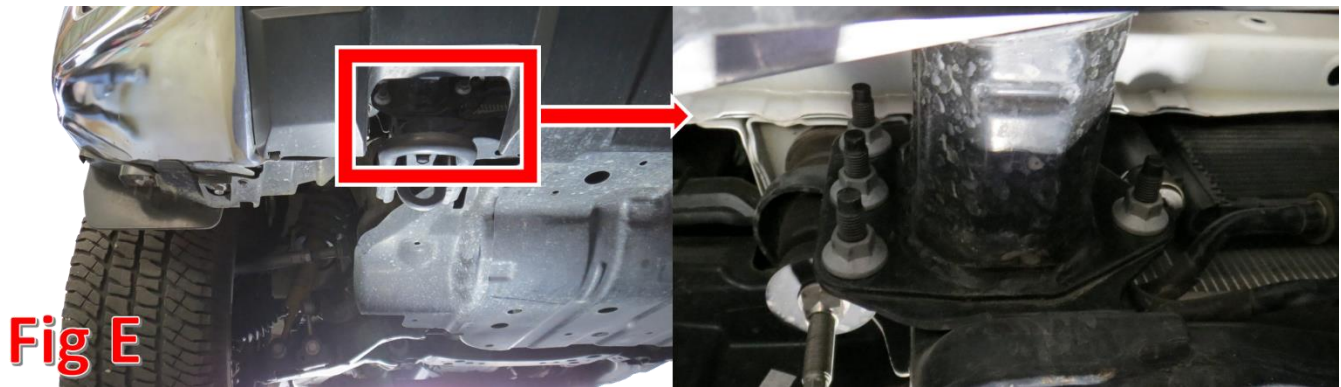


Fig E

7. Slide the OEM bumper off the truck.
8. **THIS STEP IS OPTIONAL.** Remove the tow hooks. There are two 17mm bolts along the bottom side of each hook that need to be removed. (Fig F)

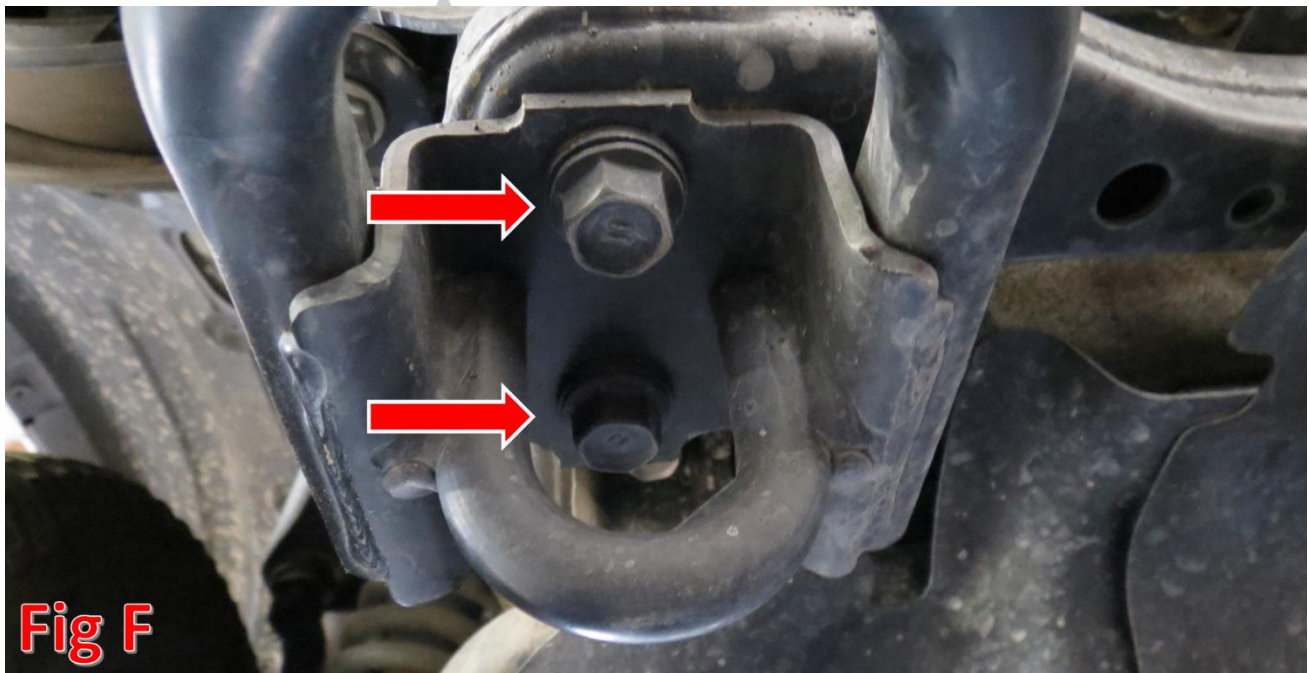


Fig F

9. Prepare to install your new ADD Front Bumper.

INSTALLATION

1. If you have any lights to install on your bumper, now would be a good time to do so. Please follow the light manufacturer's instructions for mounting and wiring information.
2. Line the mounting holes on your truck's frame horns up with the mounting holes on the back side of your new bumper. (Fig G)

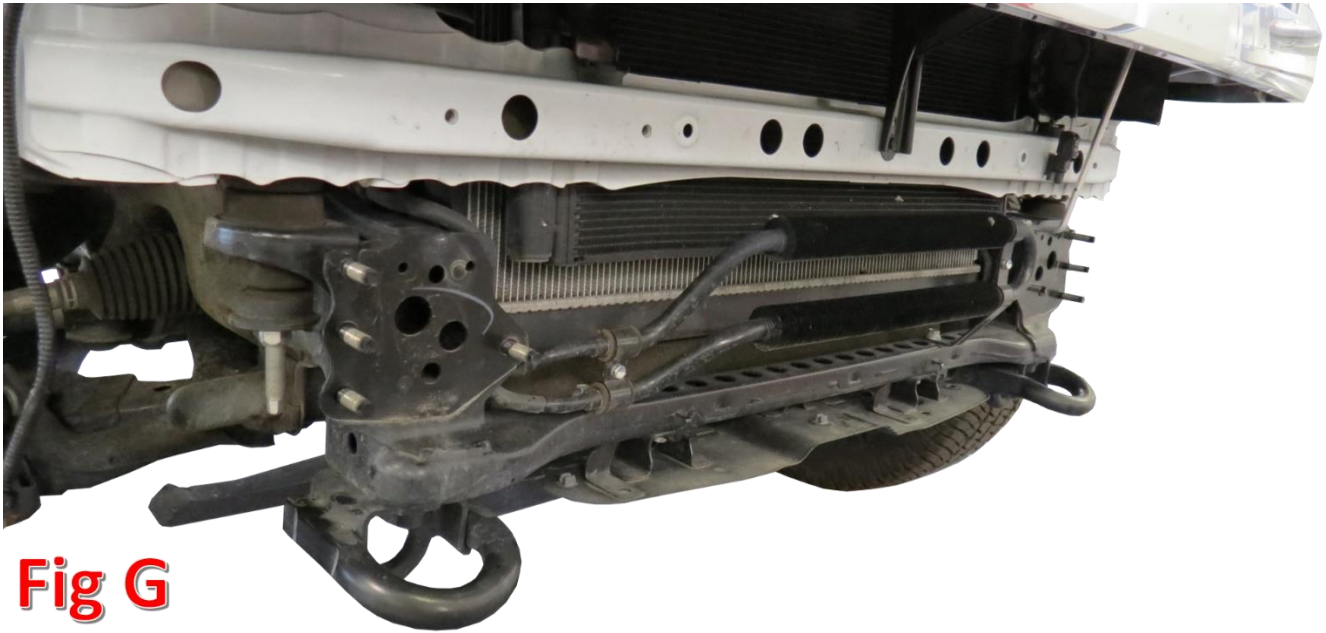


Fig G

3. Install the bolts you saved from Removal Step 6. Leave these bolts loose for now. (Fig H)



Fig H

4. Underneath the vehicle, install one of the bolts you saved in Removal Step 3 into the hole that lines up with the bumper tab on the bottom curve of the skid plate. (Fig I)



Fig I

5. Align the bumper so that it sits straight in relation to the valance/grill. Once the bumper is straight, tighten the mounting bolts (x9) to the manufacturer's specification.
6. Stand back and enjoy your new ADD Lite Front Bumper.
7. Check and re-tighten if needed, all mounting bolts after 100 miles and periodically thereafter.



**For Additional Support or Technical Questions,
Please Call 480.671.0820 or
Email info@addictivedesertdesigns.com**