

ADDICTIVE DESERT DESIGNS

2007 – Current Jeep JK Stealth Fighter Side Steps Installation Instructions

PREPARATION

1. Disconnect the negative terminal on the battery. Park the vehicle on level ground and set the emergency brake.
2. We recommend reading through the installation instructions in whole before performing the work.
3. You will need the following tools:
 - a. 19mm Socket
 - b. Ratchet
 - c. Wire crimpers
 - d. 10mm Socket
 - e. 10mm Allen Wrench or Allen Key Socket

Note: this installation requires 2 people for best results
4. Included in Kit:
 - 2 – 1" Spacers
 - 4 – Hex Head Bolts – M12-1.75 x 120mm
 - 1 – LED Light Harness (If equipped with LED Lighting)Stock Hardware is reused

INSTALLATION

1. Remove the 3/4" Body Mount Bolts (x3) on one side of your vehicle. (Fig A)



2. Hold your new Side Steps in place, then reinstall the mounting bolts. For the front two mounts, use the supplied M12 Bolts with the OEM Jeep Washers. For the rear mount, use the OEM Bolt/Washer combination. (Fig B) On the front mount, install one of the supplied spacers between the Jeep body and the Side Step Mount (Fig C). Leave these bolts loose for now.

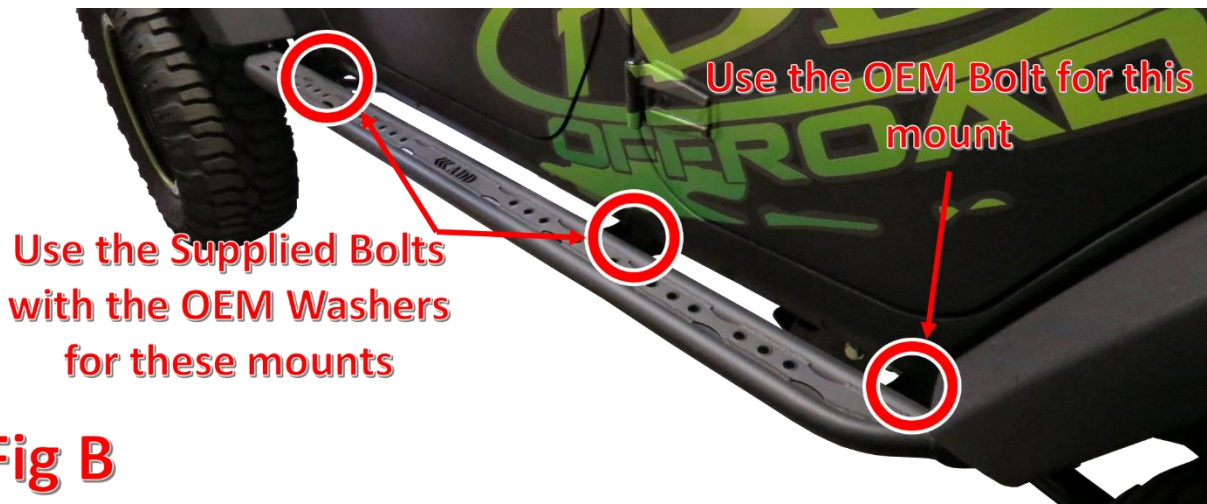


Fig B

For the Front Mount Only



Fig C

3. Push the side steps as far in towards the body as they can go, then line them up with the body line to make sure they are straight. Once they are straight, use a 10mm Allen Wrench or Allen Key Socket to tighten the supplied mounting bolts (x2) to the vehicle manufacturer's torque spec. Use a 19mm Socket to tighten the OEM mounting bolts to the vehicle manufacturer's torque spec.
4. Repeat Steps 1-3 on the other side of the vehicle.
5. Pass the LED Light Harness under the vehicle through the transmission cross member. Make sure the single end is on the driver side and the double end is on the passenger side of the vehicle. (Fig D)

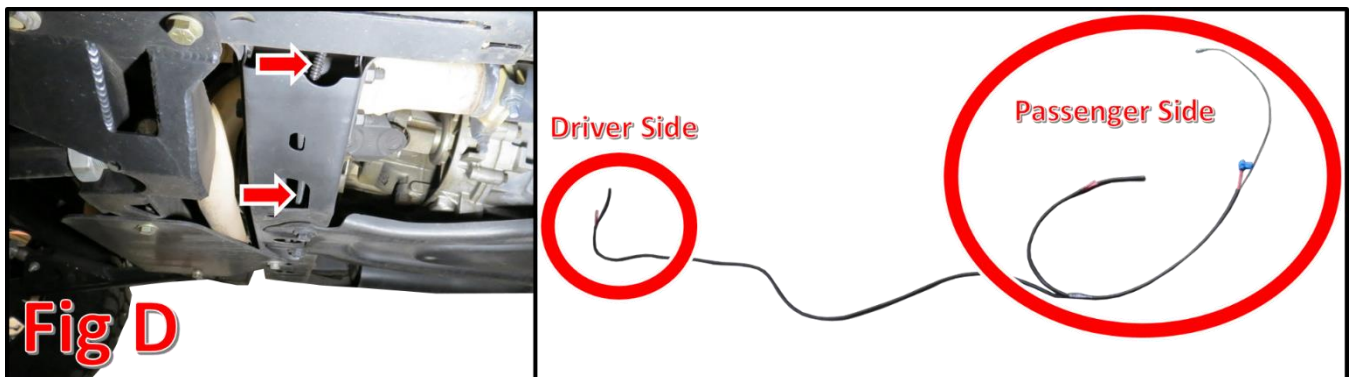
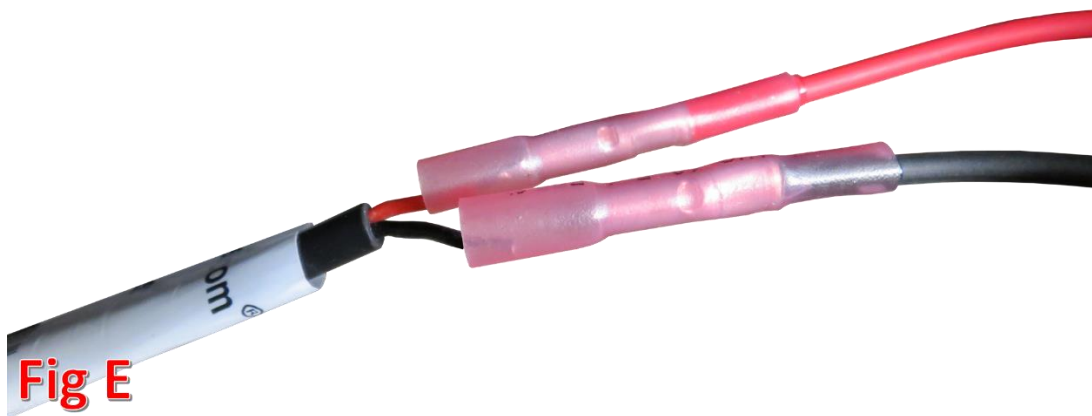


Fig D

6. On the driver side of the vehicle, attach the LED light harness to the harness coming from the steps. Use the butt connectors already attached to the LED Harness to connect the red wire to the red wire coming from the steps. Then, connect the black harness wire to the black step wire the same way. (Fig E)

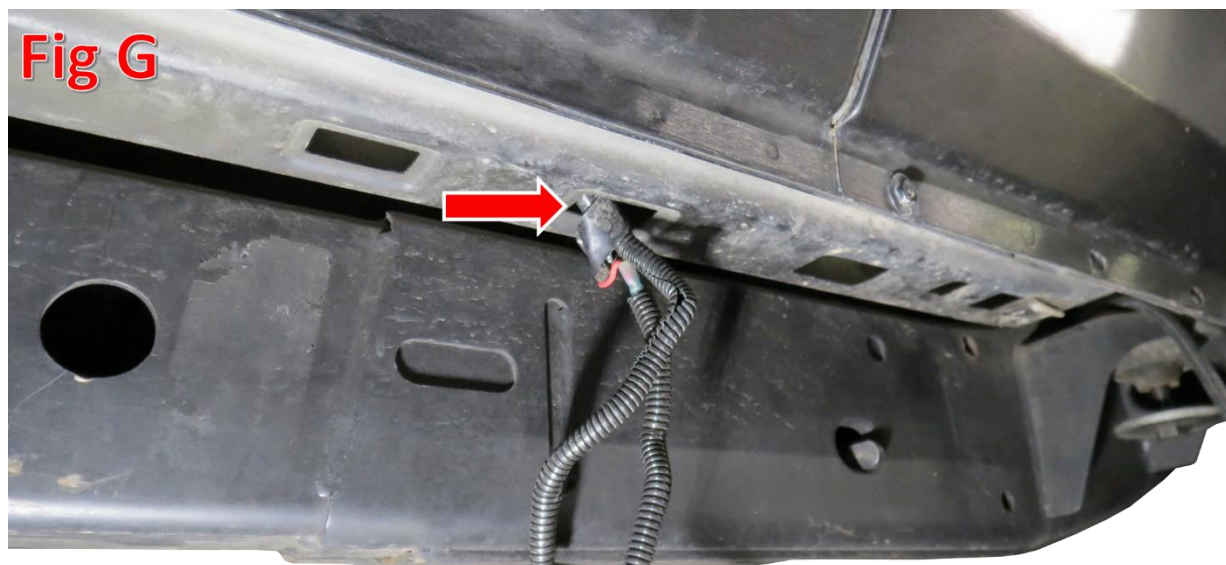
7. On the passenger side of the vehicle, locate the end of the LED light harness with two butt connectors attached to the red and black wires. Use those butt connectors to attach the red harness wire to the red wire coming from the steps. Then, connect the black harness wire to the black step wire the same way. (Fig E)



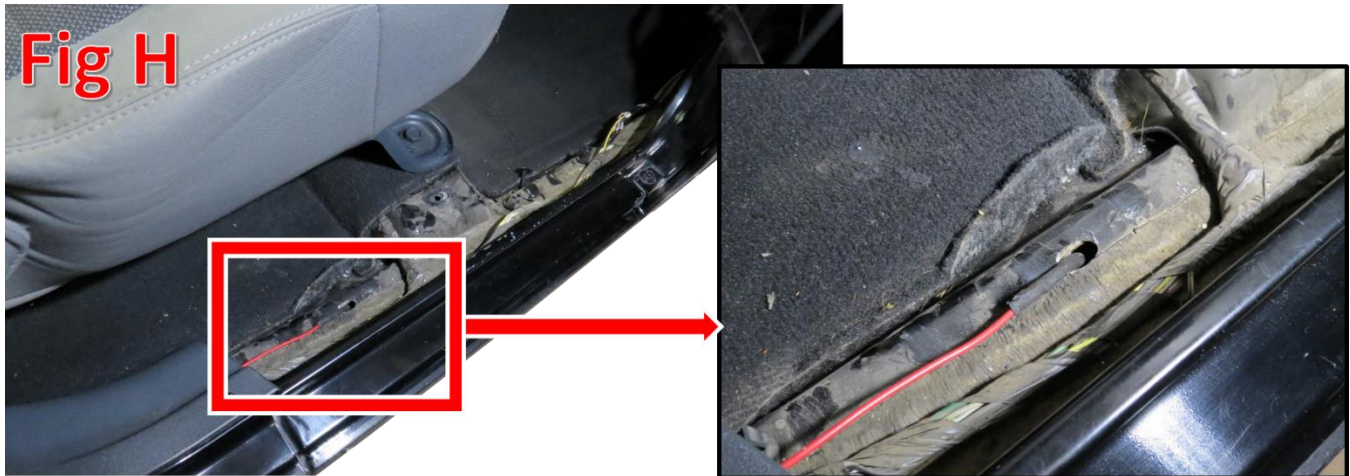
8. Open the passenger side door and locate the two kick panels along the door sill. Remove the three plastic clips holding them in place, then remove the main kick panel and leave the other one loose. (Fig F)



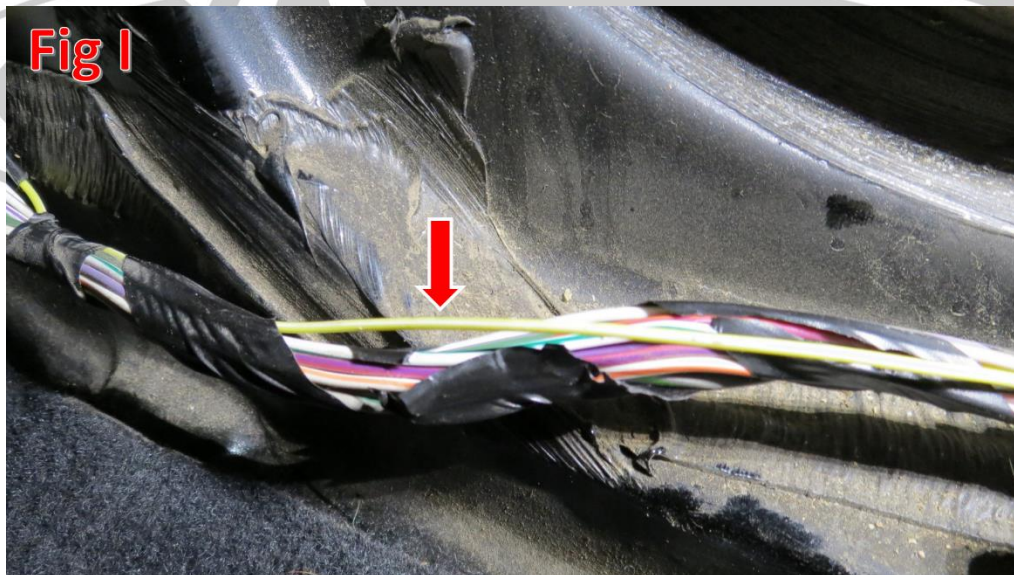
9. Underneath the vehicle, there is a series of holes that run along the pinch weld. Pass the remaining two wires (red with a blue splice connection and black with an eyelet) up through one of those holes. (Fig G)



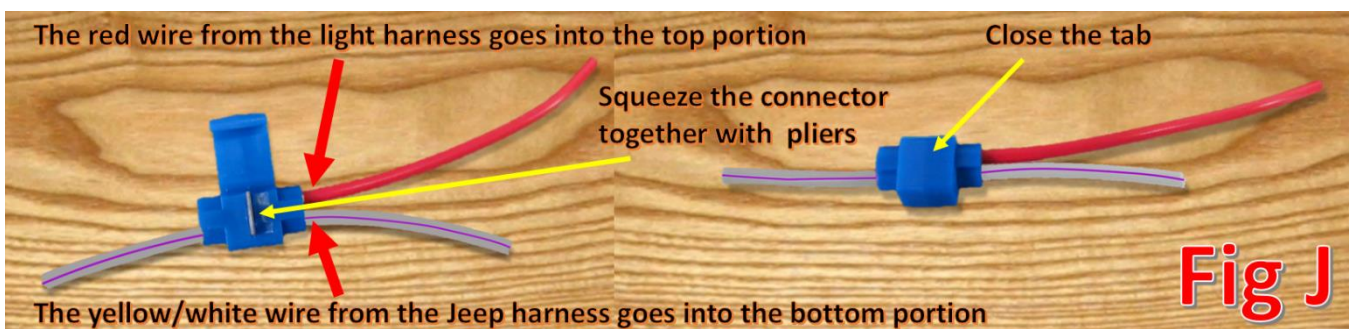
10. From inside the passenger door, locate the hole that is referenced in Fig H. Find the wires you passed through the lower body holes and fish them through this hole. You may need a small pick (or something similar) to help guide the wires through this hole.



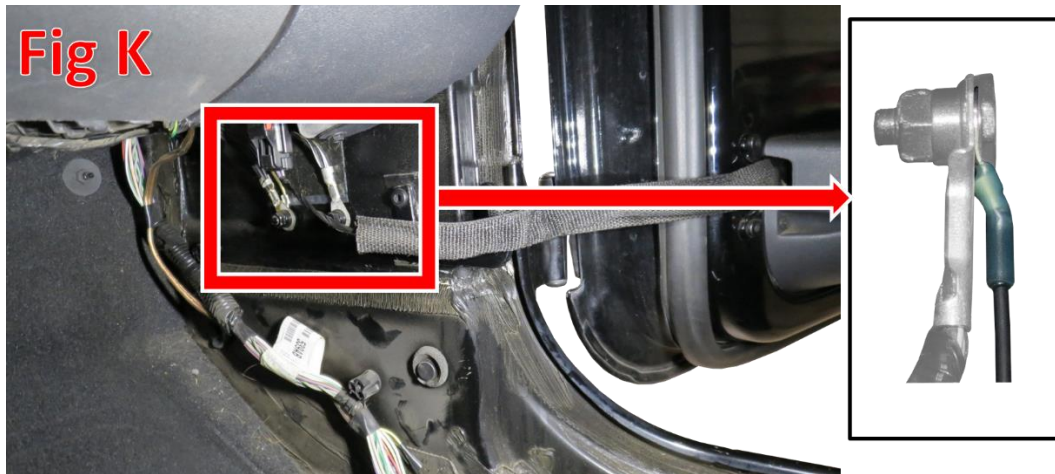
11. Once the wire is fed into the body, route it towards the front of the vehicle along the passenger side floorboard (follow the harness that is already there).
12. Remove some of the tape that holds the OEM harness together, so that you can locate the wire that is yellow with a white stripe. (Fig I)



13. Using the splice connector that is already attached to the red LED Harness wire, attach the red harness wire to the Jeep's yellow/white stripe wire. Fig J explains how the splice connector works.



14. Locate the two grounds along the body that are referenced in Fig K. Attach the remaining black wire in the LED Harness to one of these grounds by loosening the nut (10mm Socket), sliding the eyelet attached to the black wire between the nut and body, then retightening the nut. (Fig K)



15. Reconnect your battery terminals, open the door, and make sure the dome light and LED Side Step Lights turn on when the door is opened.
16. Reinstall the kick panels you removed in Step 8.
17. Stand back and enjoy your new ADD Stealth Fighter Side Steps.
18. Check and re-tighten if needed, all mounting bolts after 100 miles and periodically thereafter.



For Additional Support or Technical Questions,
Please Call 480.671.0820 or
Email info@addictivedesertdesigns.com