

ADDICTIVE DESERT DESIGNS

2009 – 2014 F150 A.D.D. Lite Front Bumper Installation Instructions

PREPARATION

1. Disconnect the negative terminal on the battery. Park the vehicle on level ground and set the emergency brake.
2. We recommend reading through the installation instructions in whole before performing the work.
3. You will need the following tools:
 - a. Ratchet
 - b. 10mm Socket
 - c. 3/4" Socket and Wrench
 - d. 21mm Socket
 - e. 7/16" Socket and Wrench

Note: this installation requires 2 people for best results

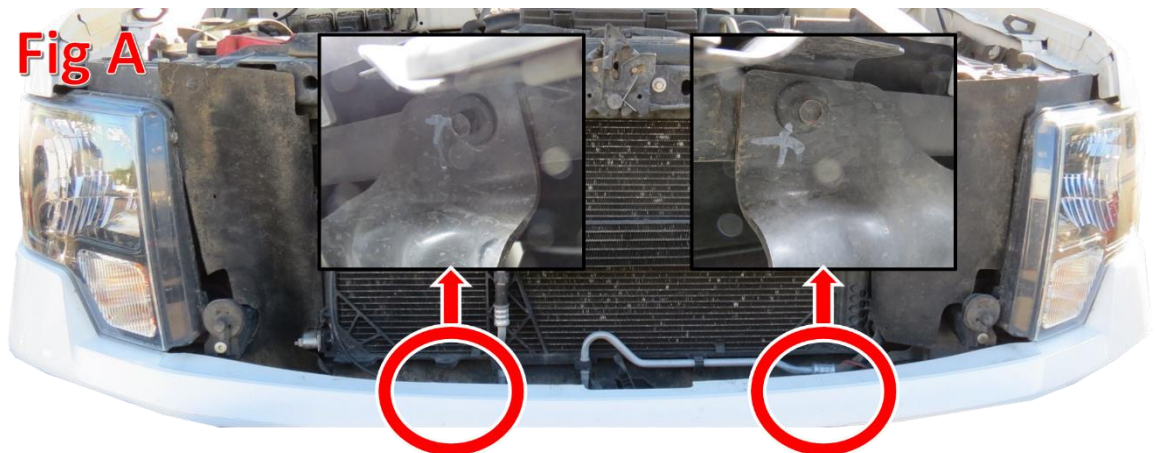
4. Included in Kit:

- 4 – Hex Head Bolts – 1/2"-13 x 1 1/2"
- 8 – Flat Washers – 1/2"
- 4 – Nylon Locking Nuts – 1/2"-13
- 2 – Aluminum Valve Brackets
- 2 – Hex Head Bolts – 1/4"-20 x 1 1/4"
- 4 – Flat Washers – 1/4"
- 2 – Nylon Locking Nuts – 1/4"-20

REMOVAL

1. With the hood popped, come from the top and remove the two 10mm bolts that are on the backside of the top

(painted) part of the bumper. (Fig A)



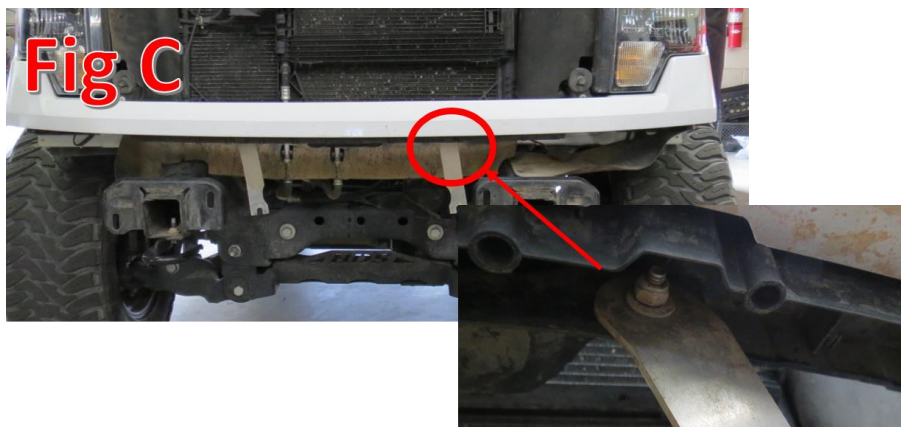
2. From the bottom, remove any fog light connectors if your vehicle is equipped with fog lights.
3. From the bottom, remove the four 21mm nuts (2 per side) on the back side of the mounts holding the bumper to the frame horns. (Fig B)



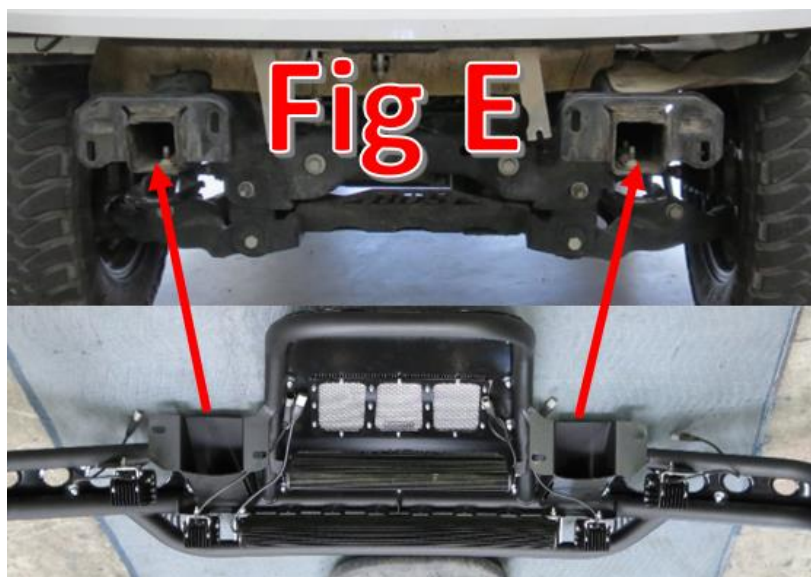
4. Your bumper is ready to be removed, and you are ready to install your new ADD Front Bumper.

INSTALLATION

1. First, Install the Aluminum Valance Brackets.
 - a. There are 2 holes that are now empty after the stock bumper removal that will be used to hold the top half of the Valance Brackets.
 - b. Push the $\frac{1}{4}$ " Hex Head bolt with a $\frac{1}{4}$ " Flat Washer through the once empty hole referred to in Fig C as well as the top hole of the Valance Bracket.
 - c. Install a $\frac{1}{4}$ " Flat Washer and a $\frac{1}{4}$ " Nylon Locking Nut on the bolt once it is pushed through.
 - d. Make sure the cutout faces towards the center of the truck, and also ensure the Brackets are positioned so that they will be sandwiched by the bumper mounting bolts as the bumper is installed. (Fig D)



2. Install any lights to your bumper at this time, using the Light Manufacturers Installation Instructions
3. Install your A.D.D. Lite Bumper onto your truck.
 - a. Line the 4 Mounting Holes in the front bumper up with the 4 Mounting Holes in the front frame horns of the truck (Fig E). Use the supplied $\frac{1}{2}$ "X1 $\frac{1}{2}$ " Bolts, $\frac{1}{2}$ " Washers, and $\frac{1}{2}$ " Nylon Locking Nuts to hold the bumper in place (Leave these finger tight for now). Be sure the Valance Brackets have been sandwiched between the mounting bolts and the bumper (Fig F).
 - b. Line the bumper up so that it sits straight and lines up with the valance (This is where a second person might be necessary), then tighten the 2 outer mounting bolts to 70 foot pounds.
 - c. Line the valance up for the final time so that it looks straight with the top of the bumper, then tighten the two inner bumper mounting bolts (that also hold the valance supports in place) to 70 foot pounds. (Fig F)



4. Stand back and enjoy your A.D.D. Lite Front Bumper.
5. Check and re-tighten if needed, all mounting bolts after 100 miles and periodically thereafter.



For Additional Support or Technical Questions,
Please Call 480.671.0820 or
Email info@addictivedesertdesigns.com

ADDICTIVE DESERT DESIGNS
4840 E. JASMINE STREET SUITE 112
MESA, AZ 85205
WWW.ADDICTIVEDESERTDESIGNS.COM

