

# ADDICTIVE DESERT DESIGNS

## 2009 – 2014 Ford F150/Raptor Stealth Side Steps Installation Instructions

### PREPARATION

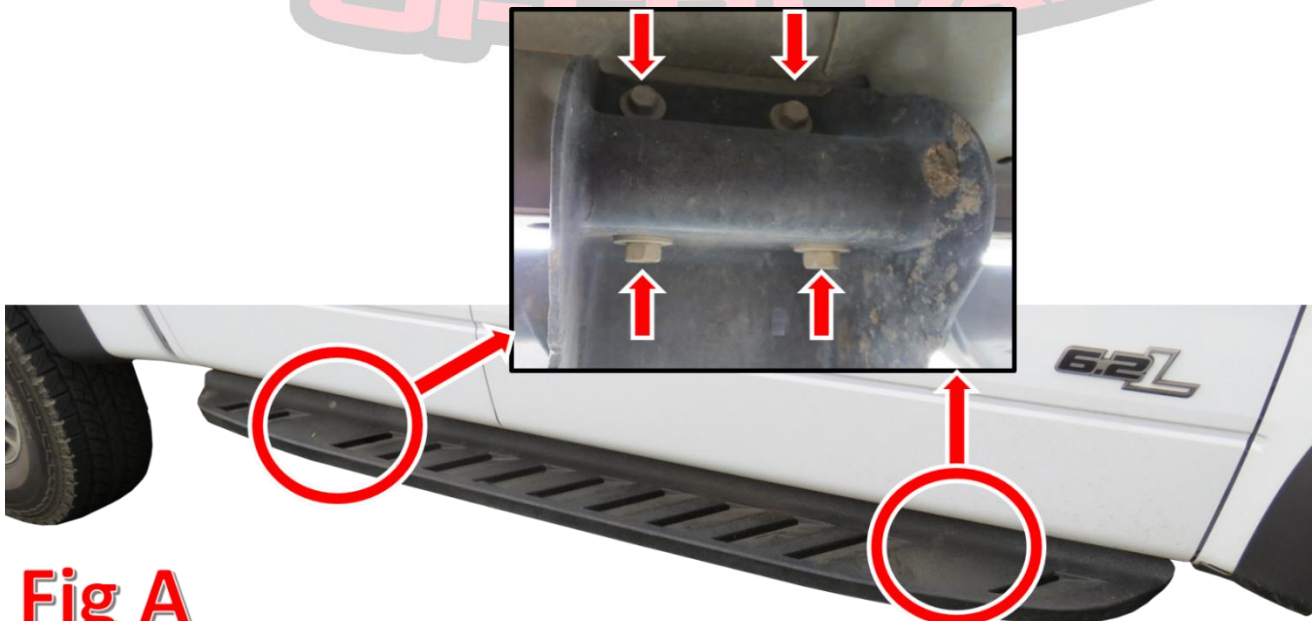
1. Disconnect the negative terminal on the battery. Park the vehicle on level ground and set the emergency brake.
2. We recommend reading through the installation instructions in whole before performing the work.
3. Estimated Installation Time: **1 Hour**
4. You will need the following tools:
  - a. 3/16" Allen Wrench or Allen Key Socket
  - b. 13mm Socket
  - c. Ratchet

*Note: this installation requires 2 people for best results*

5. Included in Kit:
  - 16** – Button Head Bolts – 5/16"-18 x 1"
  - 16** – Flat Washers – 5/16"
  - 16** – Extruded U-Nuts – 5/16"-18

### REMOVAL

1. If your truck does not have OEM Side Steps, skip to the installation portion of this document.
2. From the bottom of the truck, locate the eight 13mm bolts holding the OEM Side Step to your truck. There are 4 bolts per mount and two mounts per step. (Fig A)



**Fig A**

3. Repeat Step 2 on the opposite side of your truck.
4. Prepare to install your new ADD Stealth Side Steps.

## INSTALLATION

1. If your truck came with OEM Side Steps, you may reuse the stock hardware that was holding on your original Side Steps. You also have the option to remove the OEM U-Nuts from their locations. Then, install the provided 5/16" U-Nuts (x8) in the same location you took the OEM U-Nuts out of.
2. If your truck did not come with OEM Side Steps, lay your Side Steps out and match the mounts with the series of holes along the bottom of your vehicle's cab. Make sure the side with the longer gap between the mount and the end of the step sits towards the rear of the vehicle. (Fig B) Install the provided 5/16" U-Nuts (x8) in the holes that line up with your Side Step mounts. (Fig C)

Rear of the Vehicle

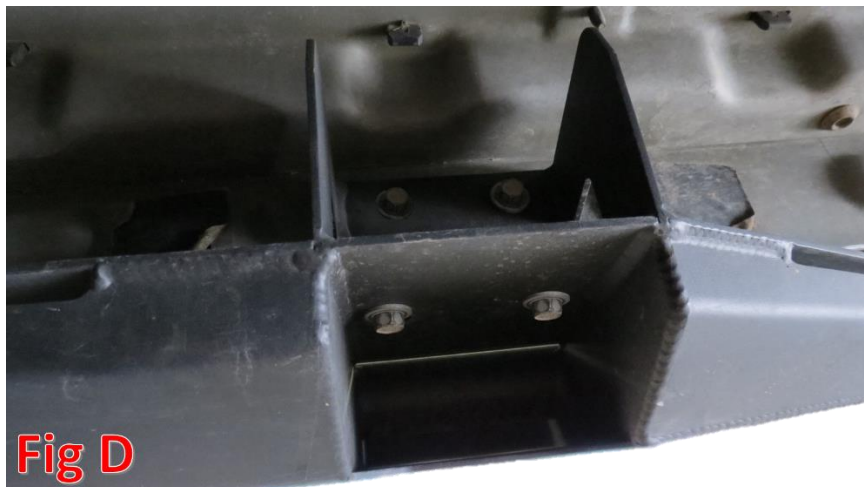


**Fig B**



**Fig C**

3. Hold your new ADD Side Steps in place and loosely install the provided 5/16" Bolts (x8) and Washers (x8). (Fig D)



**Fig D**

4. Align the Side Step so that it sits straight in relation to the bottom of the truck body, then tighten the mounting bolts to 20 foot pounds.
5. Repeat Steps 1-4 on the opposite side of the truck.
6. Stand back and enjoy your new ADD Stealth Side Steps.
7. Check and re-tighten if needed, all mounting bolts after 100 miles and periodically thereafter.



**For Additional Support or Technical Questions,  
Please Call 480.671.0820 or  
Email [info@addictivedesertdesigns.com](mailto:info@addictivedesertdesigns.com)**

**Addictive Desert Designs  
4840 E. Jasmine Street Suite 112  
Mesa, AZ 85205  
[www.addictivedesertdesigns.com](http://www.addictivedesertdesigns.com)**