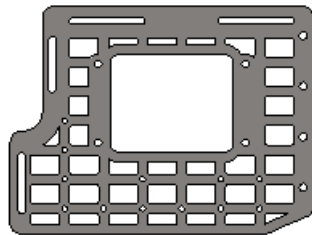
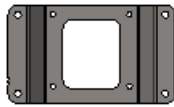
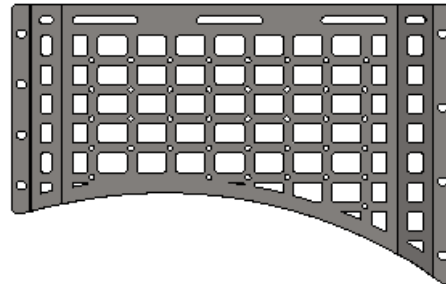


17-20/FORD RAPTOR BED SIDE SIDE PASSENGER AC1101901NA-P

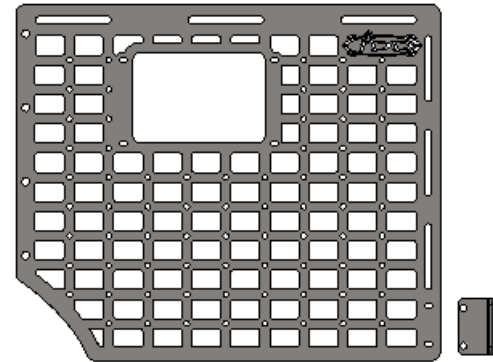
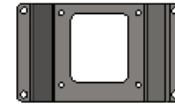
AC11047NA01



AC11043NA01



AC11041NA01



TOOLS REQUIRED

(Allen) 5/32, 7/32
(Wrench) 9/16
(Torx) T30
Ratchet



TIME REQUIRED

- 1 hours for OEM Removal/Install



SKILL LEVEL

-Easy/Intermediate



INCLUDED IN KIT

10- 1/4-20 X 3/4" Button Head Bolt
10- 1/4" Flat Washer
8- 3/8-16 X 1" Button Head Bolt
16- 3/8" Flat Washer
8- 3/-16" Nylon Lock Nut

⚠️ WARNINGS/CAUTIONS BEFORE STARTING INSTALLATION ⚠️

-BEFORE YOU INSTALL THIS KIT-

Read and understand all instructions, warnings, cautions, & notes contained in this installation instruction guide. Consult your vehicle owner's manual for proper disconnection of electrical and lifting of vehicle if required for installation of this product.

This install may require some technical skills and knowledge of basic mechanical work. If you do not feel that you are capable of performing this install please take this product to a trained professional.

After reading this guide please contact us with any questions or concerns before installing product.
Customer Service (480) 671-0820

Addictive desert designs is *not* responsible for any bodily injury or harm to you or your vehicle as a result of an improper install.

Proper installation of this kit required knowledge of the factory recommended procedures for removal and installation of original equipment components.

We recommend that the factory shop manual and any special tools needed to service your vehicle be on hand during the installation. Installation of this kit without proper knowledge of the factory recommended procedures may affect the performance of these components and the safety of the vehicle.

Inspect all contents of this package to make sure product is not damaged and all installation hardware has been included. If parts are missing from kit, please be prepared to provide the following information:

1. Name of purchase location
2. Bar Code on side of box
3. Date above bar code
4. Date inside box cover

ALWAYS WEAR EYE PROTECTION WHEN OPERATING POWER TOOLS

HARDWARE/PARTS

A.



3/8-16 X 1" BUTTON HEAD BOLT

QTY: 8

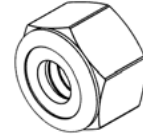
A1.



3/8" FLAT WASHER

QTY: 12

A2.



3/8-16" NYLON LOCK NUT BLACK

QTY: 8

B.



1/4-20 X 3/4" BUTTON HEAD BOLT

QTY: 10

B1.



1/4" FLAT WASHER

QTY: 10

Reference this page throughout the install

BED SIDE MOLLE PASSENGER 17-20/FORD RAPTOR

REMOVAL

□ STEP 1

Remove the tie down brackets using a (T30 torx). (keep OEM bed bolts for they will be re-used later in the install)



BED SIDE MOLLE PASSENGER 17-20/FORD RAPTOR

REMOVAL

□ STEP 2

Remove the tie down located near the tailgate using a (T30 torx). (keep OEM bed bolts for they will be re-used later in the install)

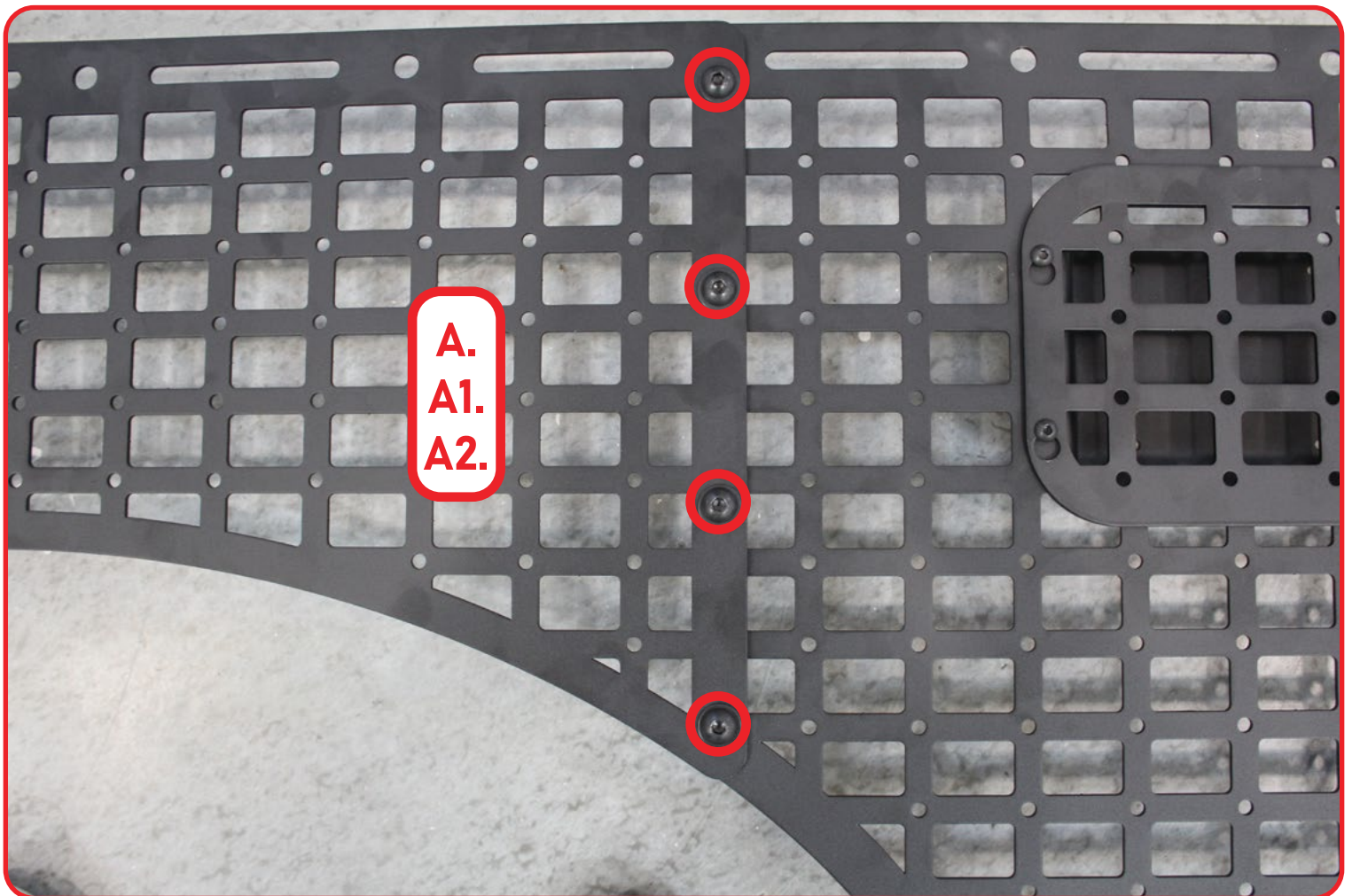
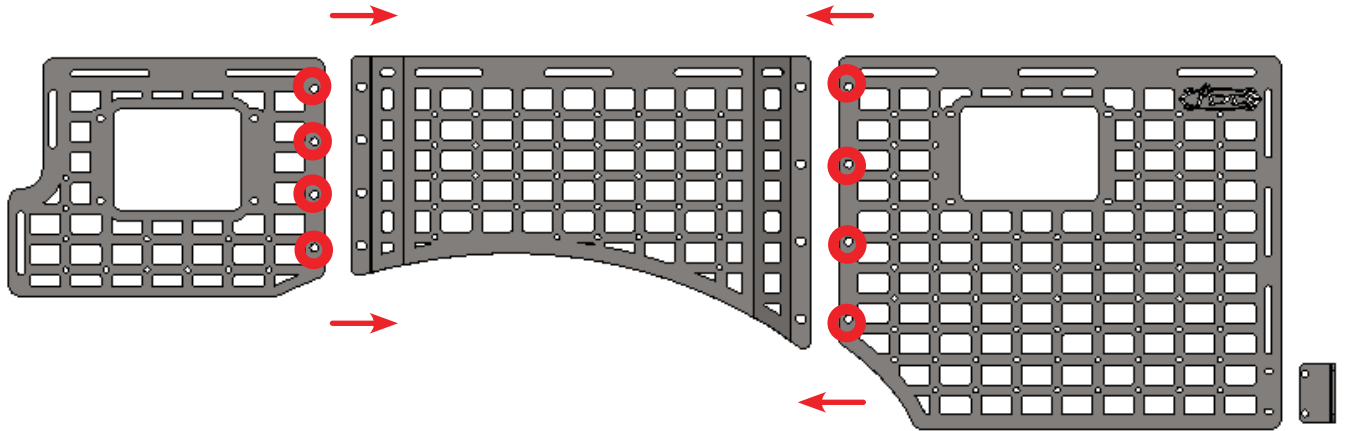


BED SIDE MOLLE PASSENGER 17-20/FORD RAPTOR

INSTALL

□ STEP 3

Assemble the panels with the provided (**A, A1, A2**) hardware using a (7/32 allen) and a (9/16 wrench).
(If you only have a Rear or Front skip this step)

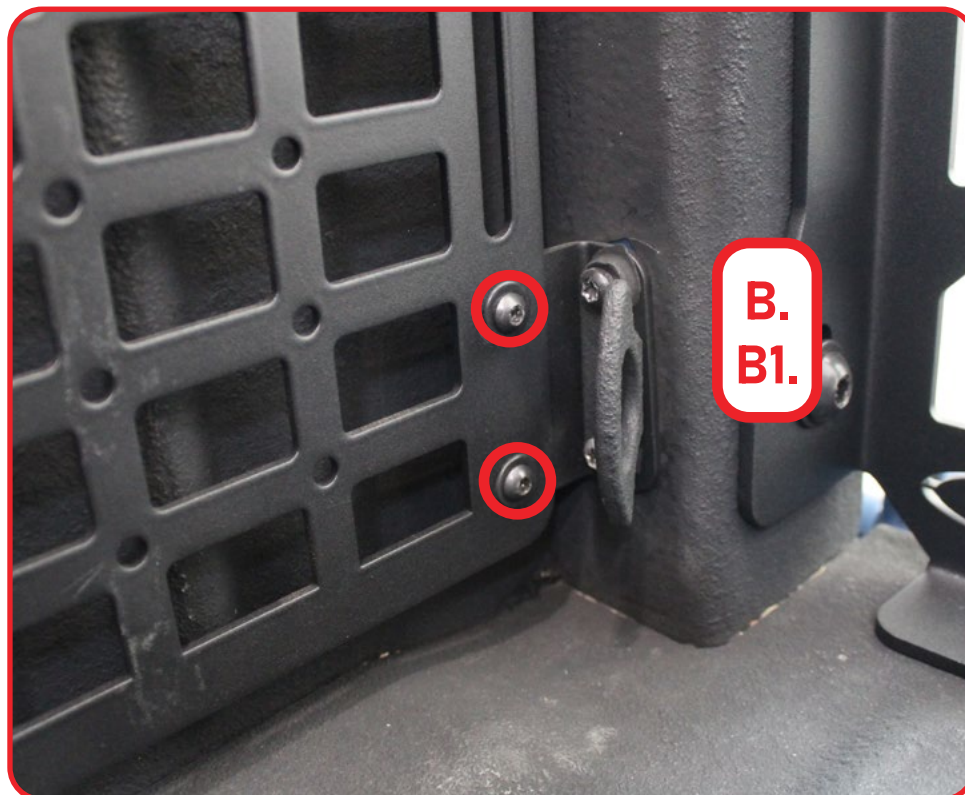
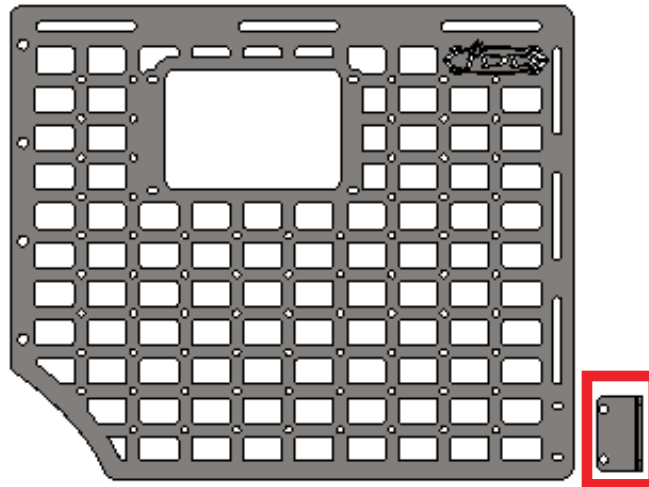


BED SIDE MOLLE PASSENGER 17-20/FORD RAPTOR

INSTALL

□ STEP 4

Install the bottom mounting bracket with the provided (**B, B1**) hardware using a (5/32 allen).

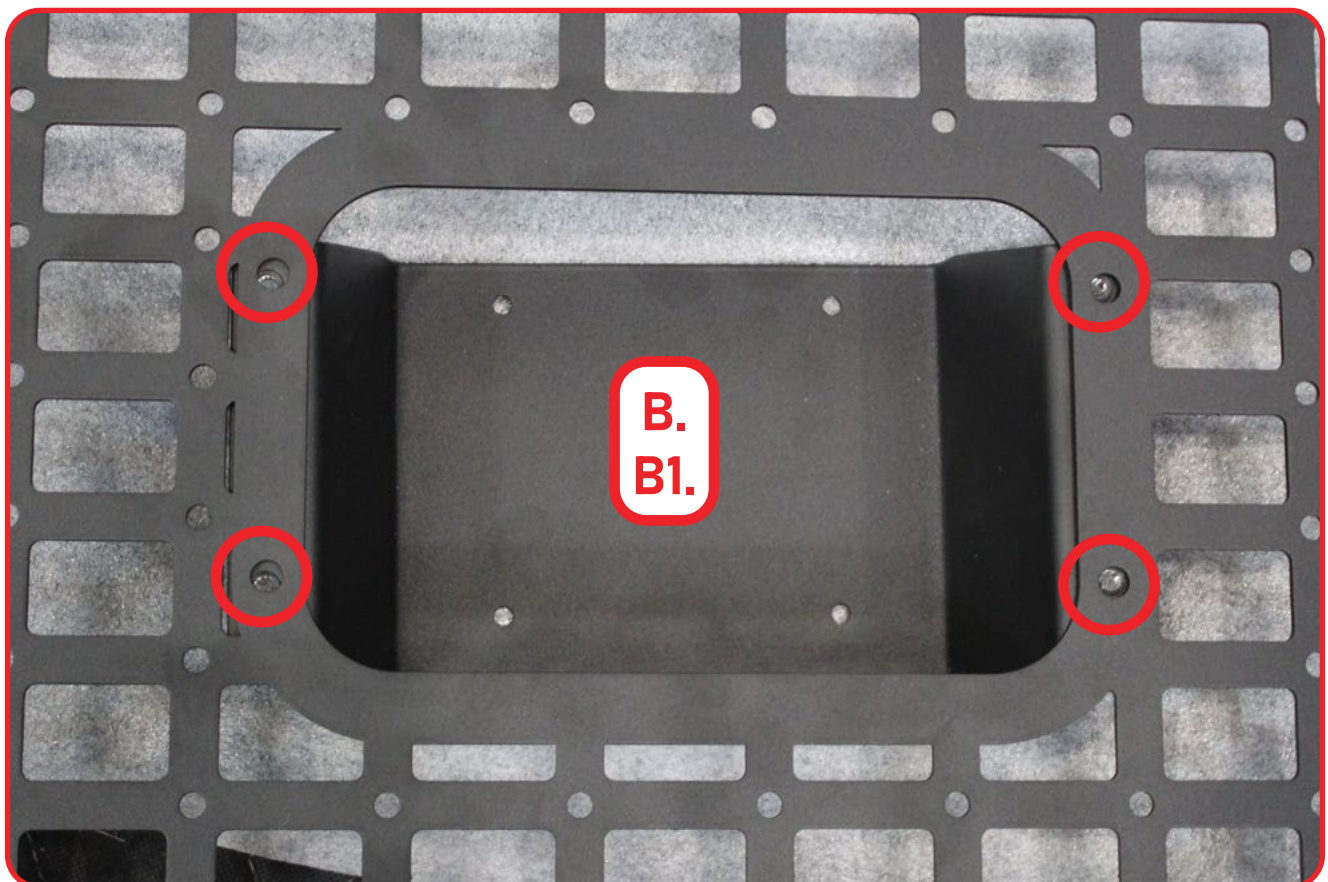
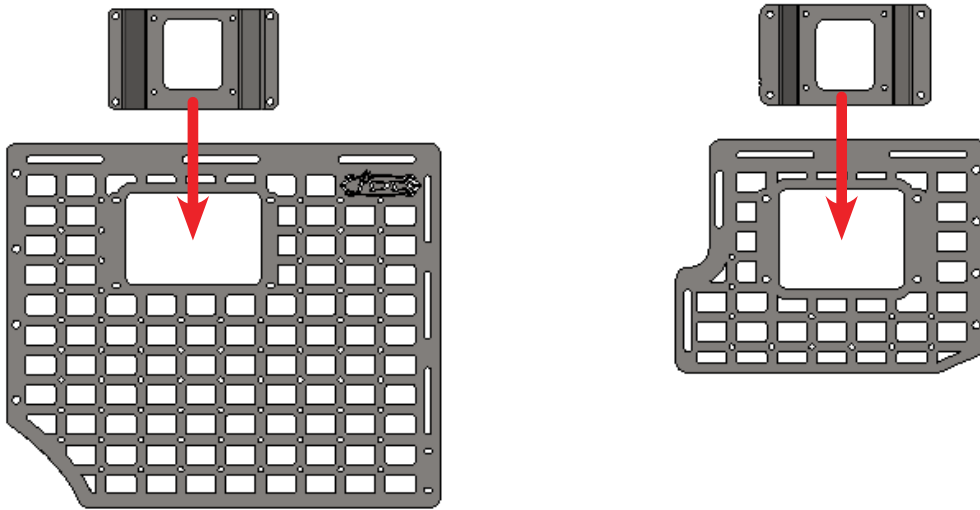


BED SIDE MOLLE PASSENGER 17-20/FORD RAPTOR

INSTALL

□ STEP 5

Install the mounting brackets with the provided (**B, B1**) hardware using a (5/32 allen).

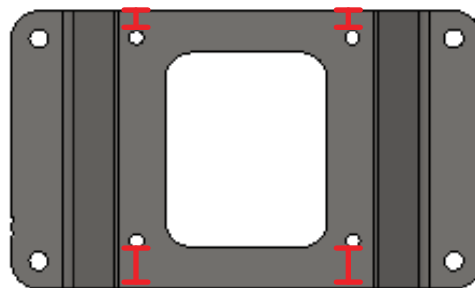
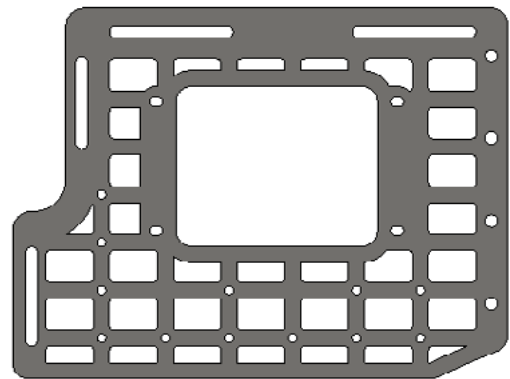
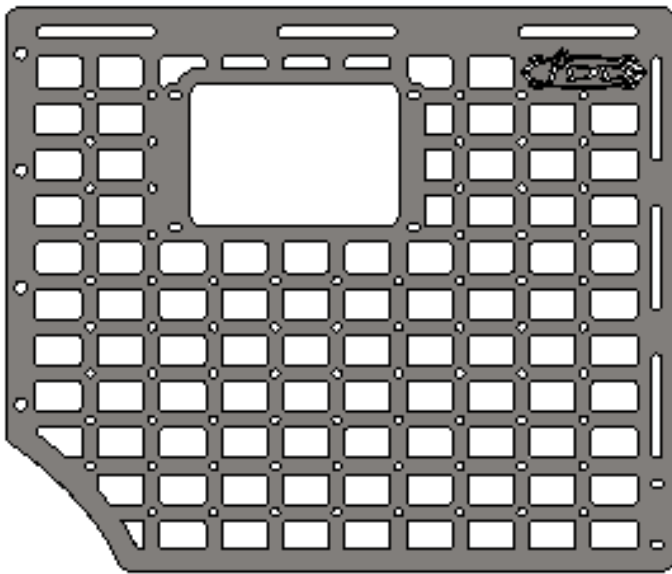
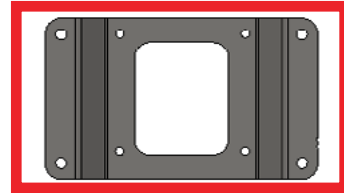
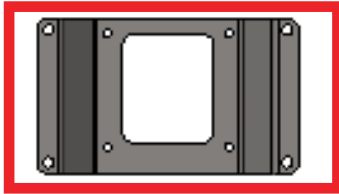


BED SIDE MOLLE PASSENGER 17-20/FORD RAPTOR

INSTALL

□ STEP 6

Ensure that the brackets are installed with the mounting holes in the orientation as shown below.



BED SIDE MOLLE PASSENGER 17-20/FORD RAPTOR

INSTALL

□ STEP 7

Install the side molle into the bed with the brackets removed from **step 1** with the OEM hardware using a (T30 torx).

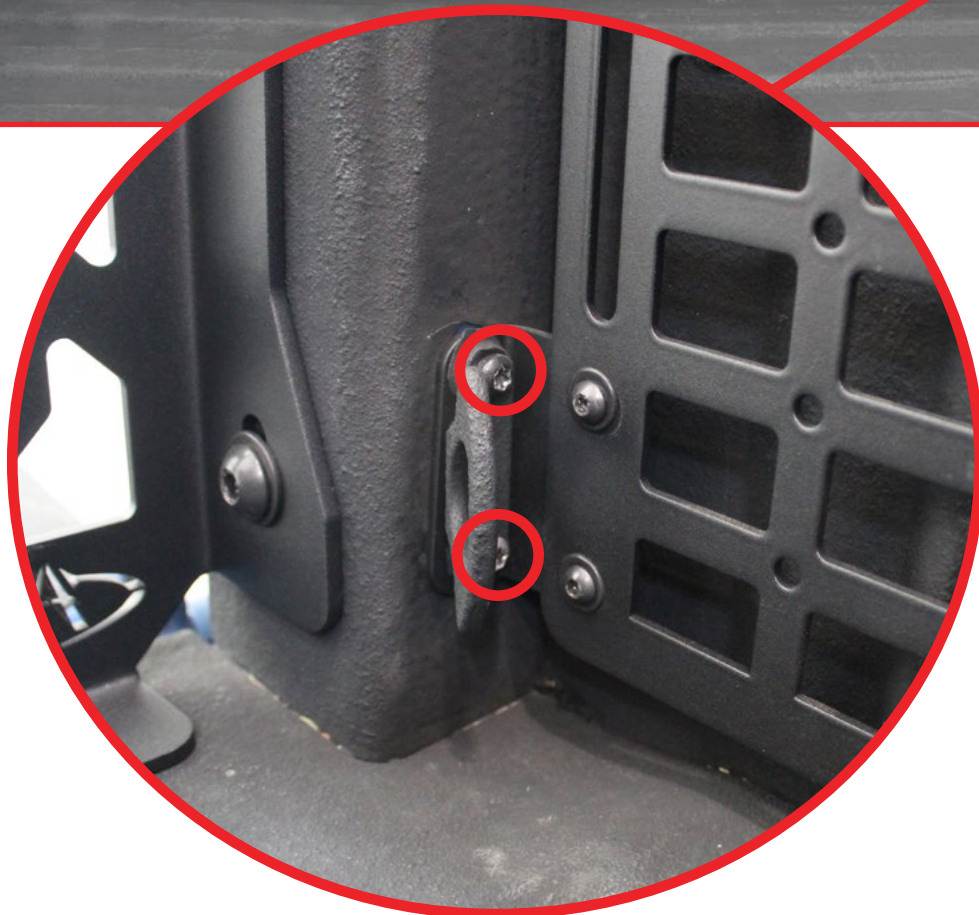


BED SIDE MOLLE PASSENGER 17-20/FORD RAPTOR

INSTALL

□ STEP 8

Install the OEM hardware removed from **step 2** using a (T30 Torx).



BED SIDE MOLLE PASSENGER 17-20/FORD RAPTOR

FINAL

STEP 9

Stand back and enjoy your new ADD Bed Side Molle.

Check and re-tighten, if needed, all mounting bolts after 100 miles and periodically thereafter.



THIS PRODUCT IS PROTECTED BY ONE OR MORE U.S. PATENTS
WWW.ADDICTIVEDESERTDESIGNS.COM/PATENTS

FOR ADDITIONAL SUPPORT OR TECHNICAL QUESTIONS,
PLEASE CALL 480-671-0820 OR
EMAIL INFO@ADDICTIVEDESERTDESIGNS.COM