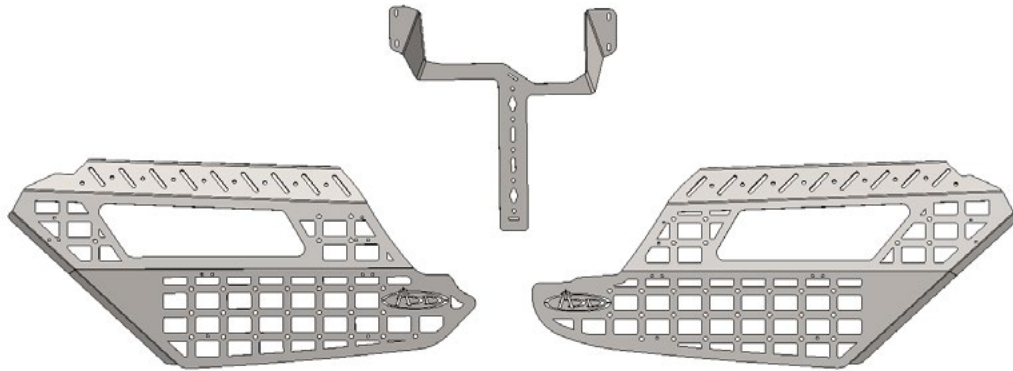


## 2021-24/DODGE TRX CENTER CONSOLE AC6202201NA



### TOOLS REQUIRED

(Allen wrenches) 1/8, 5/32  
(Drill bit) 25/64  
Rivet tool  
Marker  
Drill



### TIME REQUIRED

- 1 hours



### SKILL LEVEL

-Easy/Intermediate



### INCLUDED IN KIT

(14) 1/4-20 X 3/4" Button Head Bolt  
(14) 1/4" Flat Washer  
(14) 1/4-20" Rivet Nut  
(4) 10-24 X 1/2" Button Head Bolt  
(4) M5 Flat Washer

## ⚠️ WARNINGS/CAUTIONS BEFORE STARTING INSTALLATION ⚠️

#### -BEFORE YOU INSTALL THIS KIT-

Read and understand all instructions, warnings, cautions, & notes contained in this installation instruction guide. Consult your vehicle owner's manual for proper disconnection of electrical and lifting of vehicle if required for installation of this product.

This install may require some technical skills and knowledge of basic mechanical work. If you do not feel that you are capable of performing this install please take this product to a trained professional.

After reading this guide please contact us with any questions or concerns before installing product.  
Customer Service (480) 671-0820

Addictive desert designs is *not* responsible for any bodily injury or harm to you or your vehicle as a result of an improper install.

Proper installation of this kit required knowledge of the factory recommended procedures for removal and installation of original equipment components.

We recommend that the factory shop manual and any special tools needed to service your vehicle be on hand during the installation. Installation of this kit without proper knowledge of the factory recommended procedures may affect the performance of these components and the safety of the vehicle.

Inspect all contents of this package to make sure product is not damaged and all installation hardware has been included. If parts are missing from kit, please be prepared to provide the following information:

1. Name of purchase location
2. Bar Code on side of box
3. Date above bar code
4. Date inside box cover

**\*ALWAYS WEAR EYE PROTECTION  
WHEN OPERATING POWER TOOLS\***

## HARDWARE/PARTS

**A.**



1/4-20 X 3/4" BUTTON HEAD BOLT

QTY: 8

**A1.**



1/4" FLAT WASHER

QTY: 8

**B.**



10-24 X 1/2" BUTTON HEAD BOLT RAW

QTY: 4

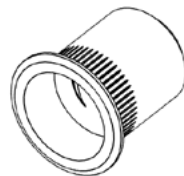
**B1.**



M5 FLAT WASHER

QTY: 6

**C.**



1/4-20" RIVET NUT

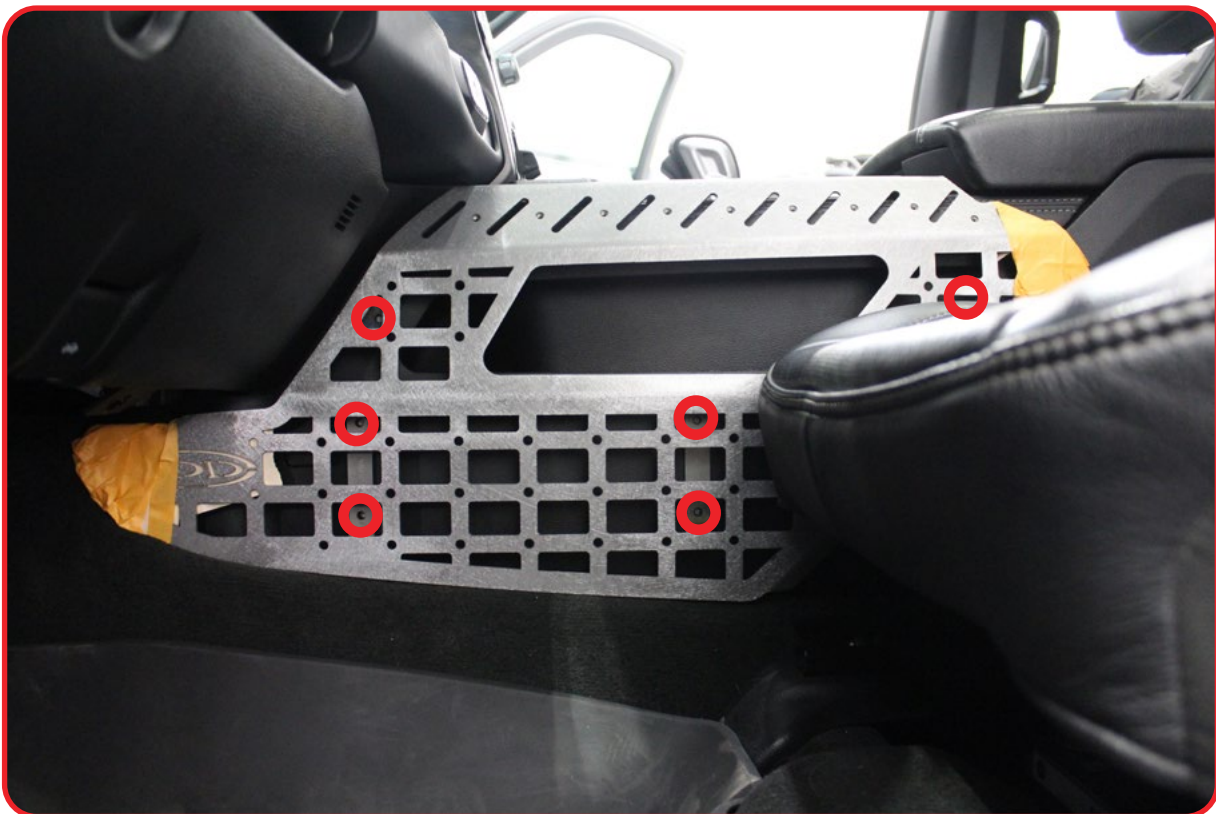
QTY: 8

**Reference this page throughout the install**

## CENTER CONSOLE 2021-24/DODGE TRX

### □ STEP 1

Position the sides of the center console on both driver and passenger and mark the 6x holes on each side as shown below. (Adjust the seat as far back and down as possible)



CENTER CONSOLE  
2021-24/DODGE TRX

STEP 2

Drill the marked holes from **step 1** by using a (25/64 drill bit).



## CENTER CONSOLE 2021-24/DODGE TRX

### □ STEP 3

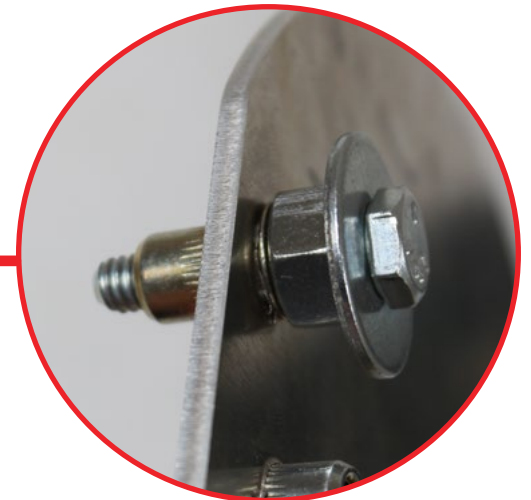
Using a (Rivet Nut Tool) install the provided **(C)** hardware in the holes drilled in **step 2**.



### TECH TIP

If you do not have a rivet nut tool, use a 1/4-20 x 3/4 hex head bolt, a 1/4 washer, and a 3/8 nut to install the rivet nuts. Tighten using a (9/16 wrench) and a (7/16 socket) on a impact.

**\*\*HARDWARE NOT INCLUDED\*\***



## CENTER CONSOLE 2021-24/DODGE TRX

### □ STEP 4

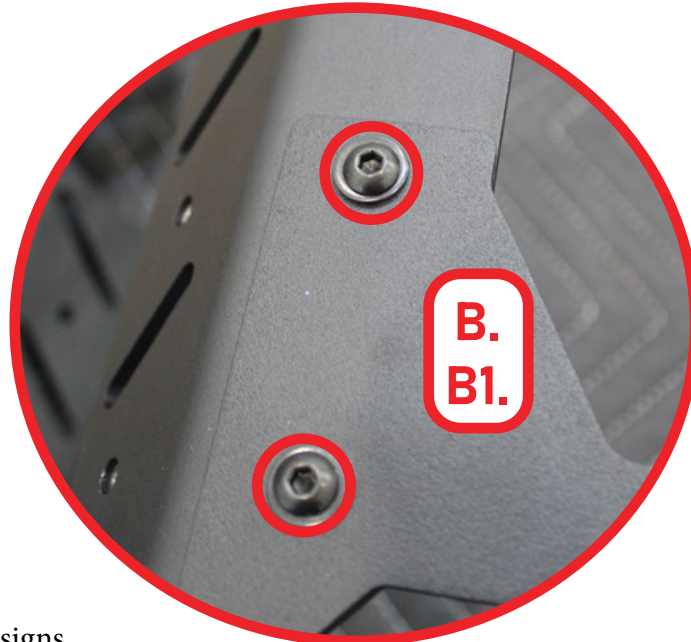
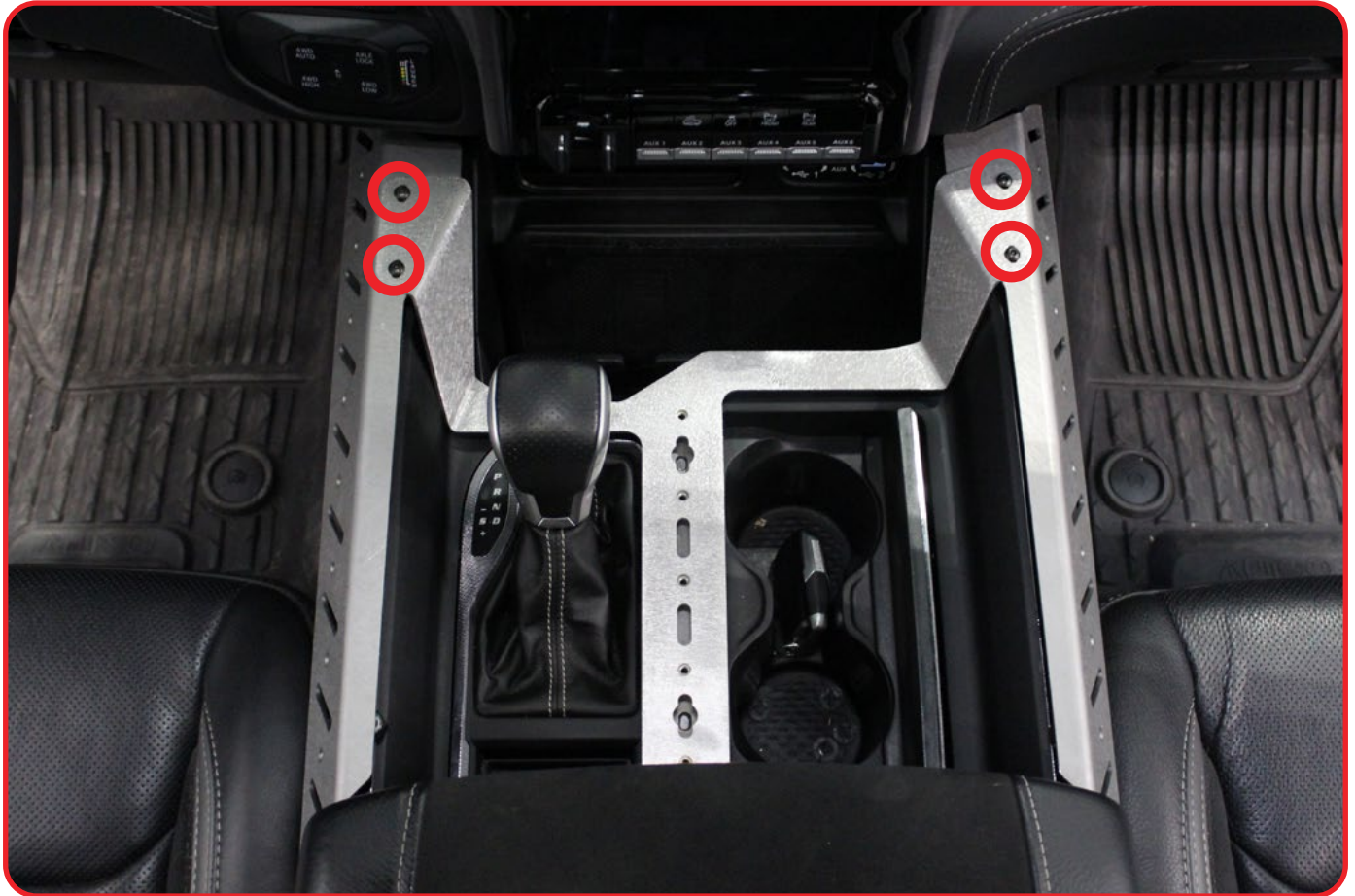
Install the sides of the center console on both driver and passenger with the provided **(A, A1)** using a (5/32 Hex).



CENTER CONSOLE  
2021-24/DODGE TRX

STEP 5

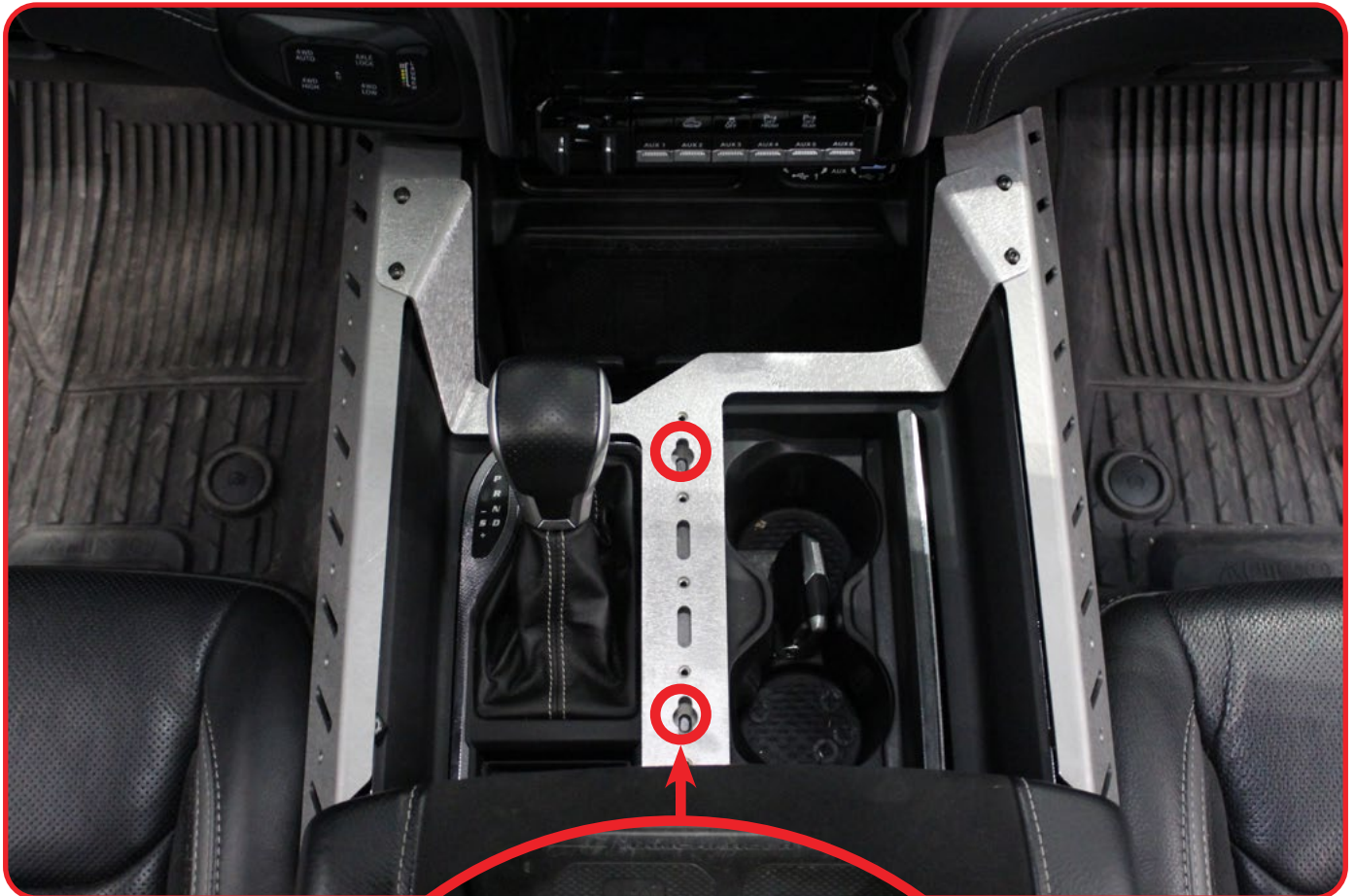
(For the bridge follow the remaining steps in the install guide) Install the provided (**B, B1**) hardware using a (1/8 allen)



CENTER CONSOLE  
2021-24/DODGE TRX

STEP 6

Mark the holes as shown below.

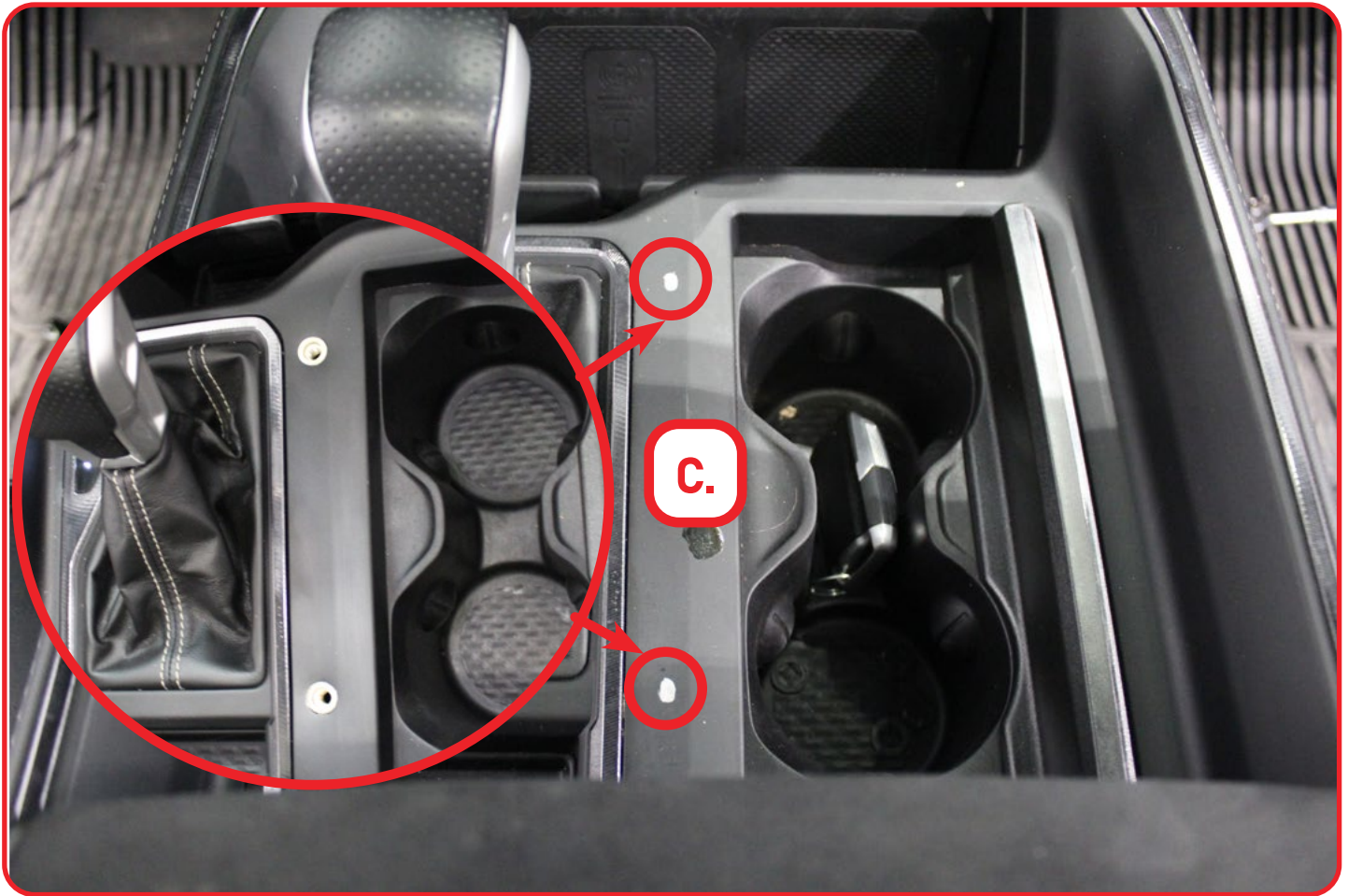




## CENTER CONSOLE 2021-24/DODGE TRX

### □ STEP 7

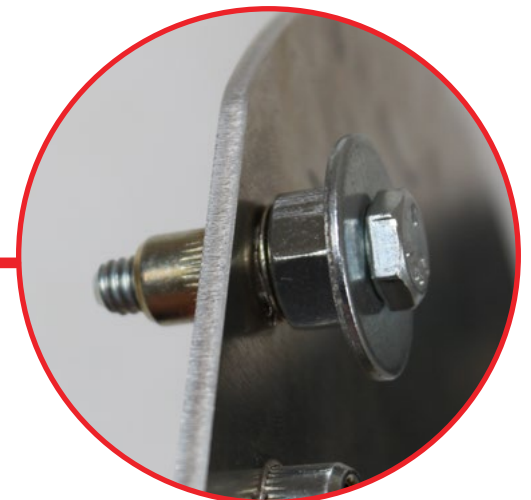
Remove the bridge and drill the marked holes from **step 6** by using a (25/64 drill bit) and install the provided **(C)** hardware using a (rivet nut tool).



### TECH TIP

If you do not have a rivet nut tool, use a 1/4-20 x 3/4 hex head bolt, a 1/4 washer, and a 3/8 nut to install the rivet nuts. Tighten using a (9/16 wrench) and a (7/16 socket) on a impact.

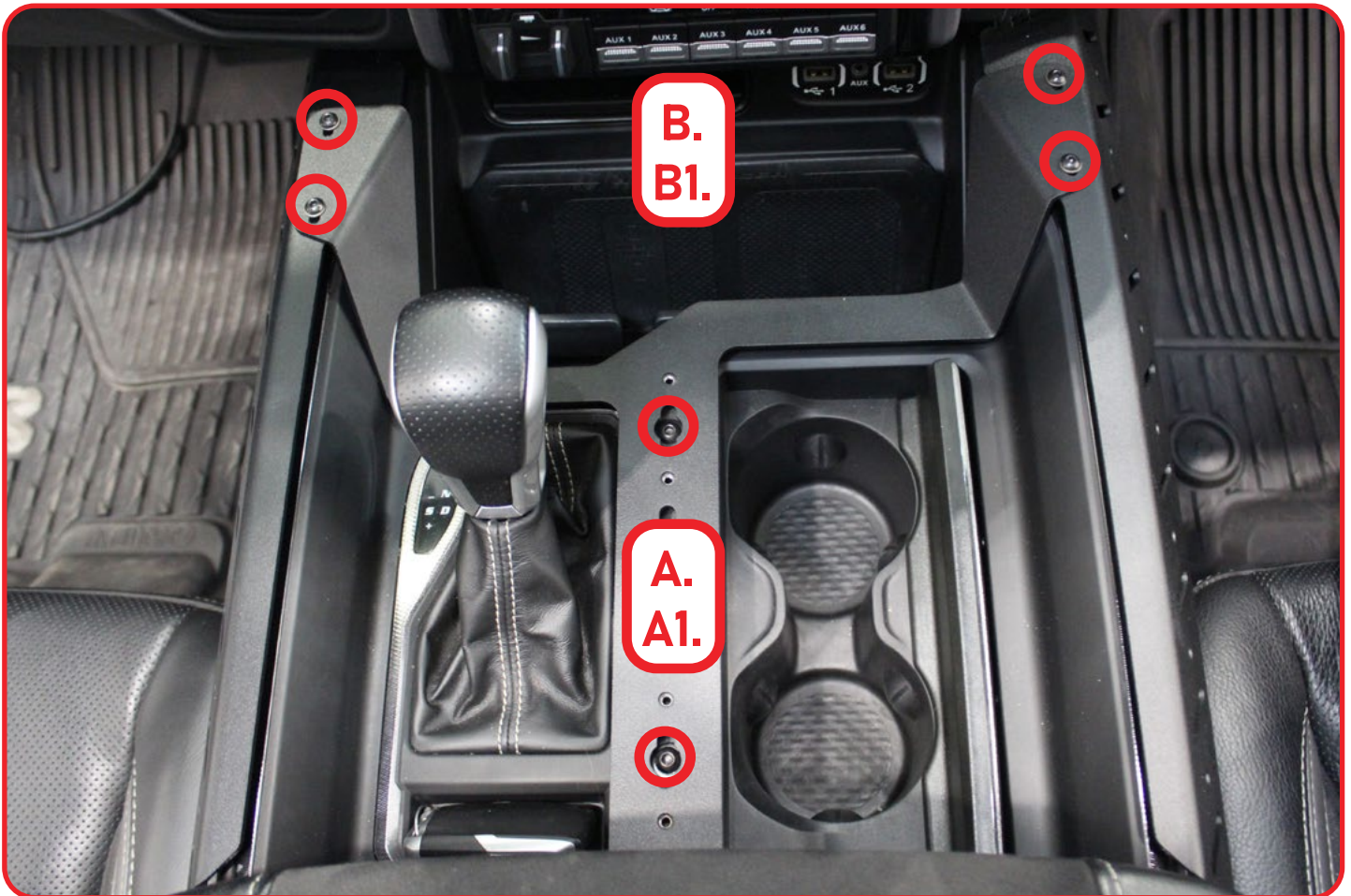
**\*\*HARDWARE NOT INCLUDED\*\***



## CENTER CONSOLE 2021-24/DODGE TRX

### □ STEP 8

With a (5/32 allen) install the **(A, A1)** 1/4-20 X 3/4" button head bolts, and 1/4" flat washers in the middle as shown below. Next install the **(B, B1)** hardware the same way as **step 5**.



## CENTER CONSOLE 2021-24/DODGE TRX

### STEP 9

Stand back and enjoy your new ADD Center Console.

Check and re-tighten, if needed, all mounting bolts after 100 miles and periodically thereafter.



THIS PRODUCT IS PROTECTED BY ONE OR MORE U.S. PATENTS  
[WWW.ADDICTIVEDESERTDESIGNS.COM/PATENTS](http://WWW.ADDICTIVEDESERTDESIGNS.COM/PATENTS)

FOR ADDITIONAL SUPPORT OR TECHNICAL QUESTIONS,  
PLEASE CALL 480-671-0820 OR  
EMAIL [INFO@ADDICTIVEDESERTDESIGNS.COM](mailto:INFO@ADDICTIVEDESERTDESIGNS.COM)