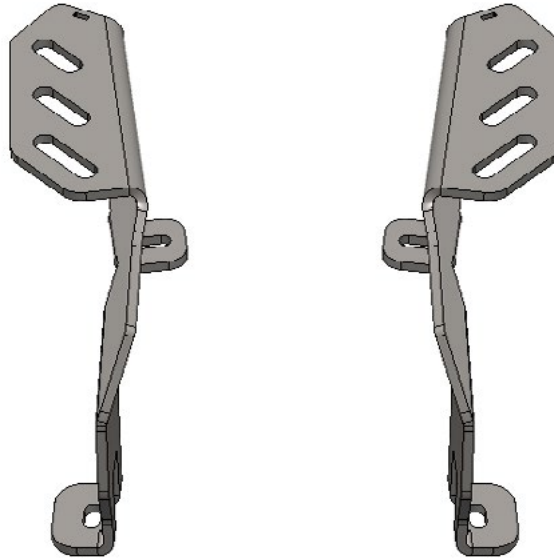


21-23 F-150/21-23 RAPTOR

DITCH LIGHT MOUNTS

AC1901801NA



TOOLS REQUIRED

(Wrench) 10mm, 13mm
(Socket) 10mm, 13mm
Ratchet



TIME REQUIRED

- 1 hours for OEM Removal/Bracket Install



SKILL LEVEL

-Easy/Intermediate

⚠️ WARNINGS/CAUTIONS BEFORE STARTING INSTALLATION ⚠️

-BEFORE YOU INSTALL THIS KIT-

Read and understand all instructions, warnings, cautions, & notes contained in this installation instruction guide. Consult your vehicle owner's manual for proper disconnection of electrical and lifting of vehicle if required for installation of this product.

This install may require some technical skills and knowledge of basic mechanical work. If you do not feel that you are capable of performing this install please take this product to a trained professional.

After reading this guide please contact us with any questions or concerns before installing product.
Customer Service (480) 671-0820

Addictive desert designs is *not* responsible for any bodily injury or harm to you or your vehicle as a result of an improper install.

Proper installation of this kit required knowledge of the factory recommended procedures for removal and installation of original equipment components.

We recommend that the factory shop manual and any special tools needed to service your vehicle be on hand during the installation. Installation of this kit without proper knowledge of the factory recommended procedures may affect the performance of these components and the safety of the vehicle.

Inspect all contents of this package to make sure product is not damaged and all installation hardware has been included. If parts are missing from kit, please be prepared to provide the following information:

1. Name of purchase location
2. Bar Code on side of box
3. Date above bar code
4. Date inside box cover

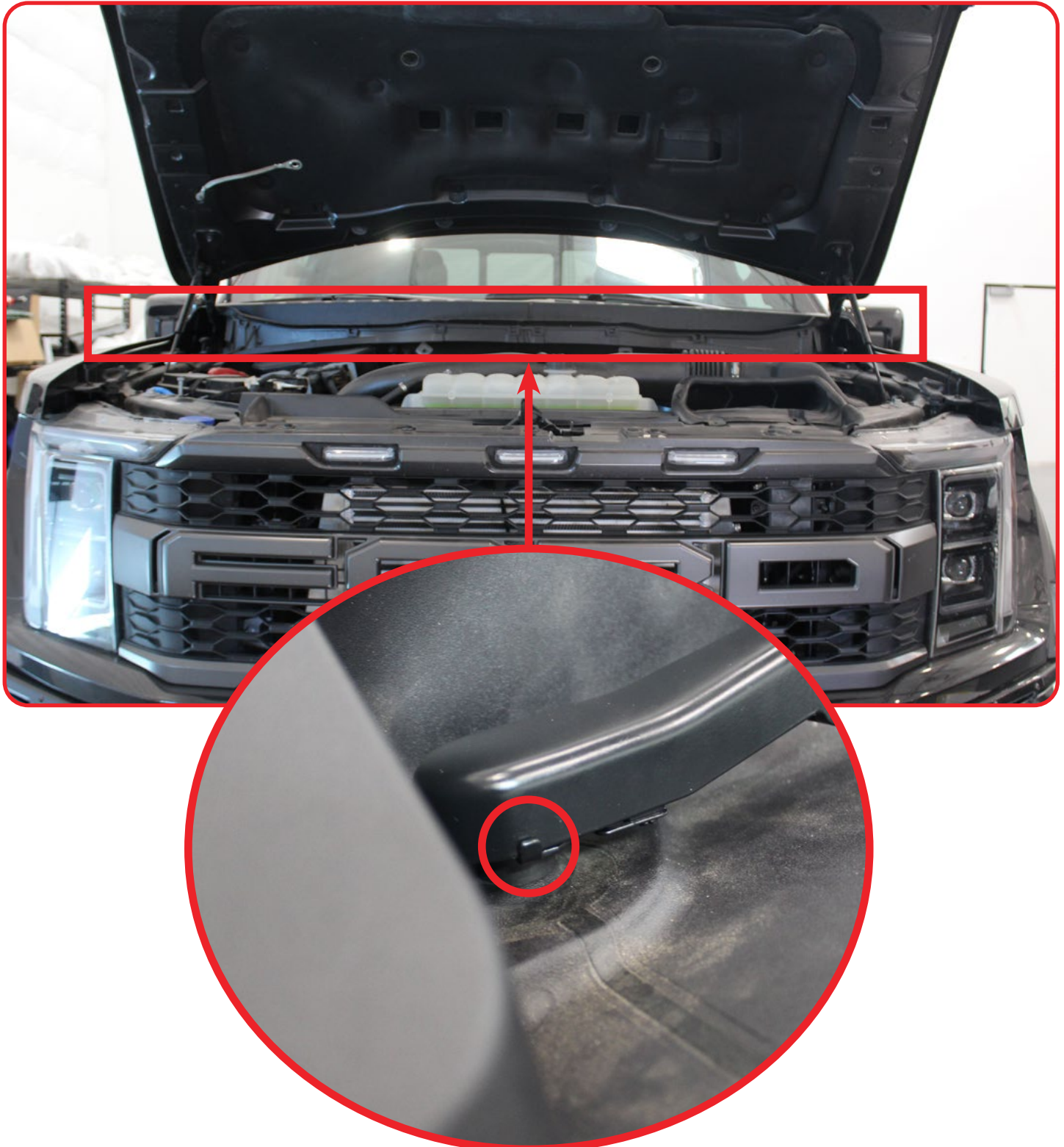
ALWAYS WEAR EYE PROTECTION WHEN OPERATING POWER TOOLS

DITCH LIGHT MOUNTS 21-23 F-150/21-23 RAPTOR

REMOVAL

□ STEP 1

Remove the wiper blades by prying the metal tab outwards and pulling the wiper blade upwards.

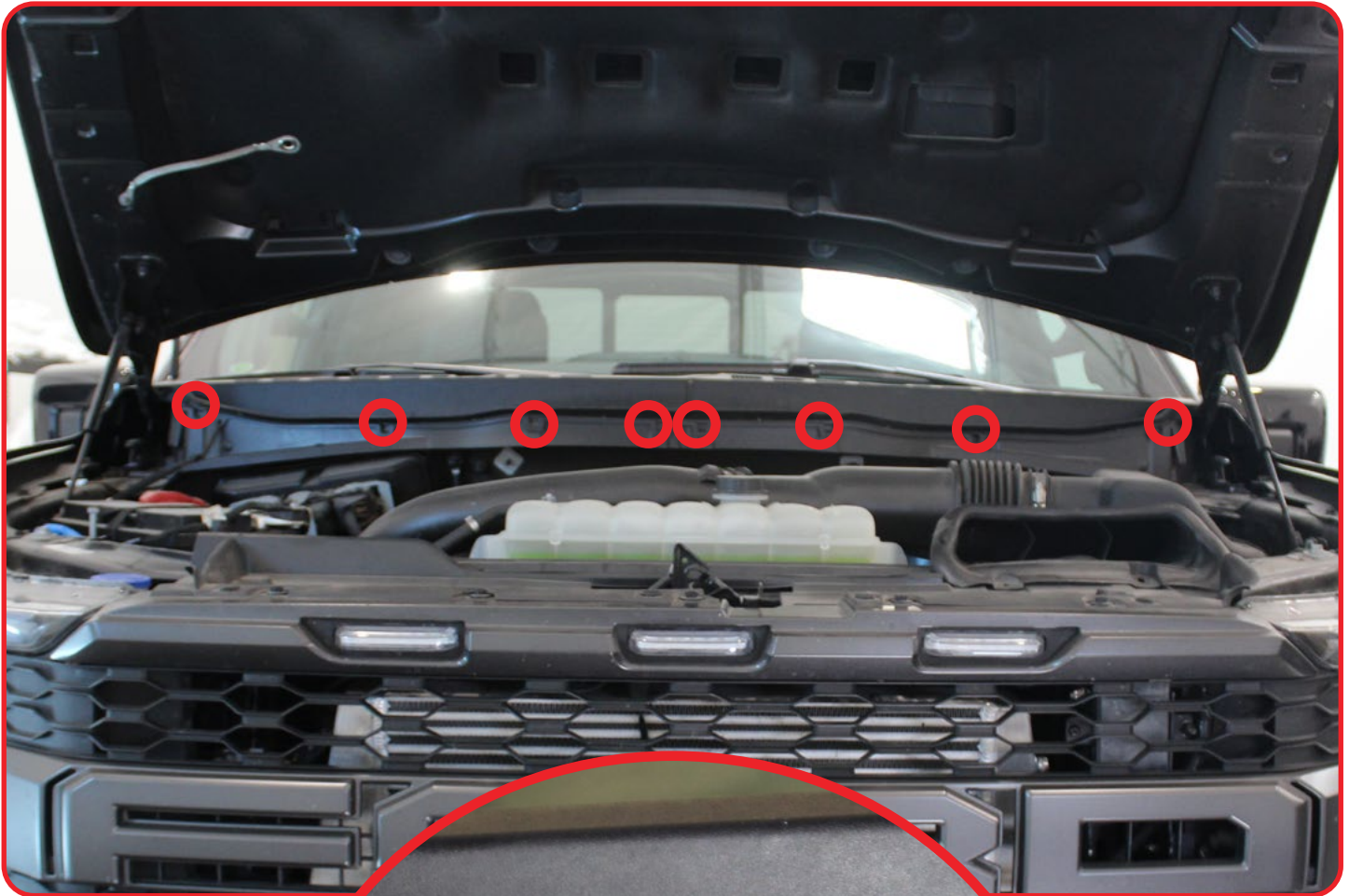


DITCH LIGHT MOUNTS 21-23 F-150/21-23 RAPTOR

REMOVAL

STEP 2

Next remove the plastic flashing by prying on the plastic tabs highlighted below. ****Pry with caution due to breakage****



DITCH LIGHT MOUNTS 21-23 F-150/21-23 RAPTOR

REMOVAL

□ STEP 3

Next remove the 4x (two on each side) OEM bolts using a (13mm socket). (keep hardware for they will be re-used later on in the install)

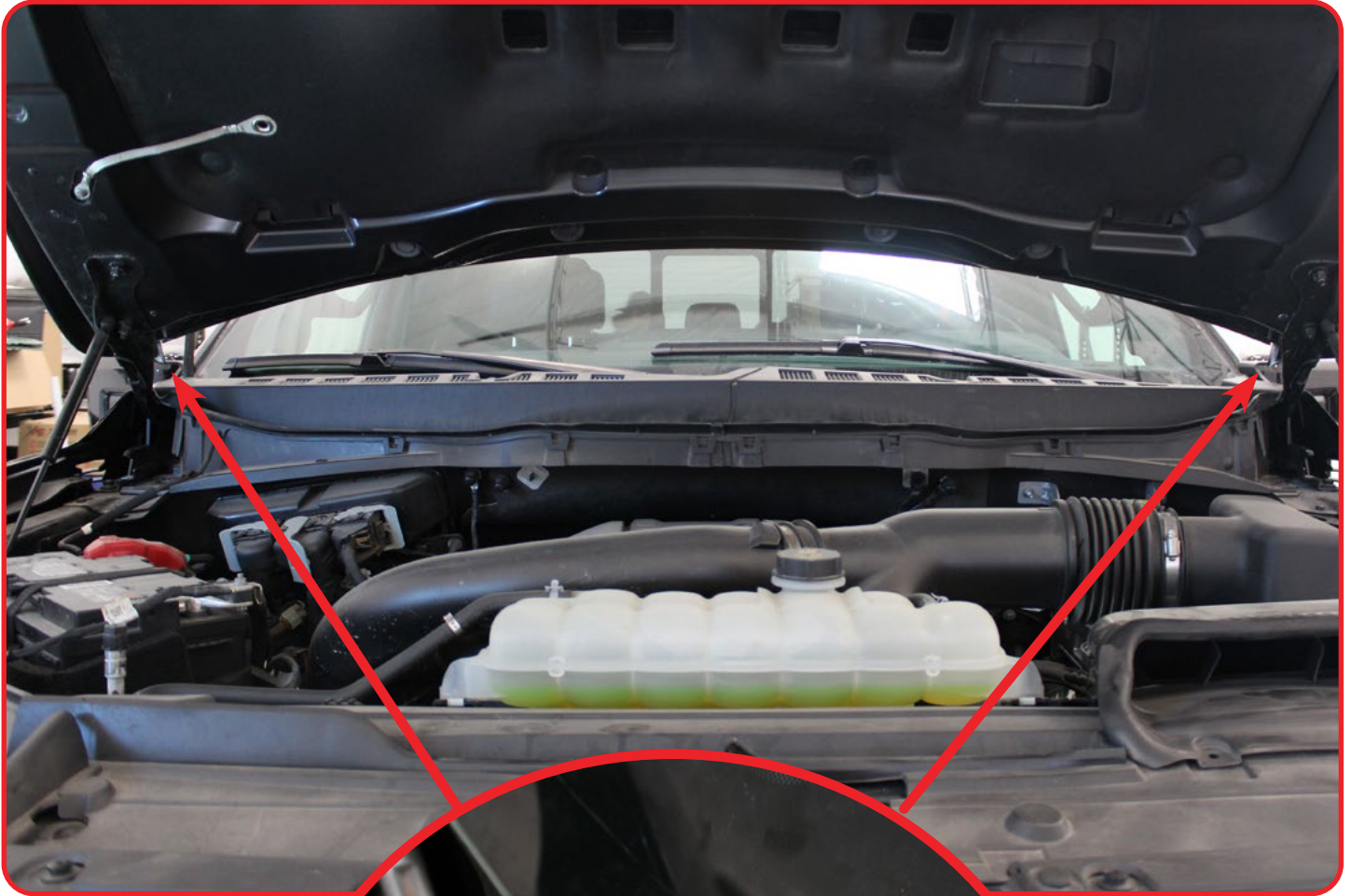


DITCH LIGHT MOUNTS 21-23 F-150/21-23 RAPTOR

REMOVAL

STEP 4

Next remove the top 2x (one on each side) OEM bolts using a (10mm socket). (keep hardware for they will be re-used later on in the install)

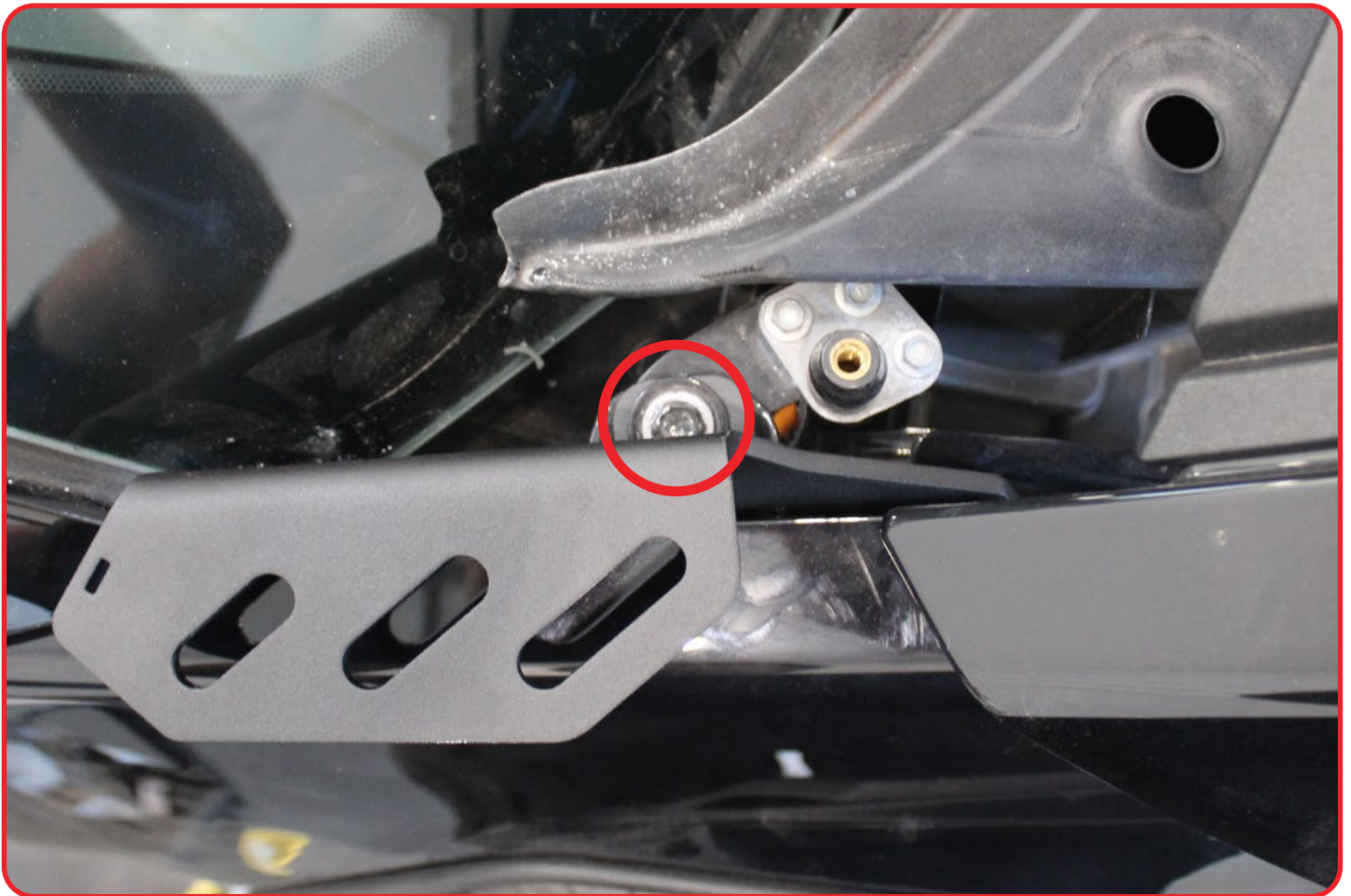


DITCH LIGHT MOUNTS 23+ / FORD SUPER DUTY

INSTALL

STEP 5

Install the ditch mount using the OEM hardware removed from **step 4** with a (10mm socket).



DITCH LIGHT MOUNTS 23+ / FORD SUPER DUTY

INSTALL

STEP 6

Install the hardware removed from **step 3** using a (13mm socket).



DITCH LIGHT MOUNTS 23+/FORD SUPER DUTY

INSTALL

STEP 7

Install the plastic flashing.



DITCH LIGHT MOUNTS 23+ / FORD SUPER DUTY

INSTALL

□ STEP 8

Install the wiper blades by prying the metal tab out and pushing down until they click into place.



DITCH LIGHT MOUNTS 23+/FORD SUPER DUTY

INSTALL

STEP 9

Ensure that the light that is installed will clear the wiper blade. Do so by turning on the wiper into the full position and adjusting the blade down until it is in the position to clear.



DITCH LIGHT MOUNTS 21-23 F-150/21-23 RAPTOR

FINAL

□ STEP 10

Stand back and enjoy your new ADD Ditch Light Mounts.

Check and re-tighten, if needed, all mounting bolts after 100 miles and periodically thereafter.



THIS PRODUCT IS PROTECTED BY ONE OR MORE U.S. PATENTS
WWW.ADDICTIVEDESERTDESIGNS.COM/PATENTS

FOR ADDITIONAL SUPPORT OR TECHNICAL QUESTIONS,
PLEASE CALL 480-671-0820 OR
EMAIL INFO@ADDICTIVEDESERTDESIGNS.COM