



## Preparation:

- Disconnect the negative battery terminal. Park the vehicle on level ground and set the emergency brake.
- We recommend reading through the installation instructions in whole before performing the work.
- When button head bolts are being used, install the supplied washer on the nut side. Then, hold the bolt stationary and only turn the nut to tighten. Do not turn the bolt to tighten hardware assembly, unless otherwise noted.
- Estimated Installation Time: **2 Hours for OEM Removal/Bumper Installation**

**1 Additional Hour to Wire Center Light**

**1 Additional Hour to Wire Side Lights**

**\*\*This installation requires 2 people for best results\*\***

**\*\*Labor Rates are based on a vehicle with no pre-existing damage. Wiring labor is based on a standard wiring procedure with light switches installed in an easily accessible location. Custom light triggering or switch mounting location will result in a greater labor charge.\*\***

## You will need the following tools:

- |                        |               |                         |
|------------------------|---------------|-------------------------|
| - Ratchet              | -15mm Socket  | -18mm socket            |
| - 3/4" Socket & Wrench | - 13mm Socket | -Long ratchet extension |

## Included in Kit:

- |   |                                |
|---|--------------------------------|
| <b>6</b> - Hex Head Bolts (1/2-13 x 1 1/4") | <b>6</b> - Flat washers (1/2") |
| <b>6</b> -Nylon Lock Nuts (1/2-13")         |                                |

**Plastic bumper removal (steps 1-8)**

**Steel Bumper removal (Steps 9-15)**

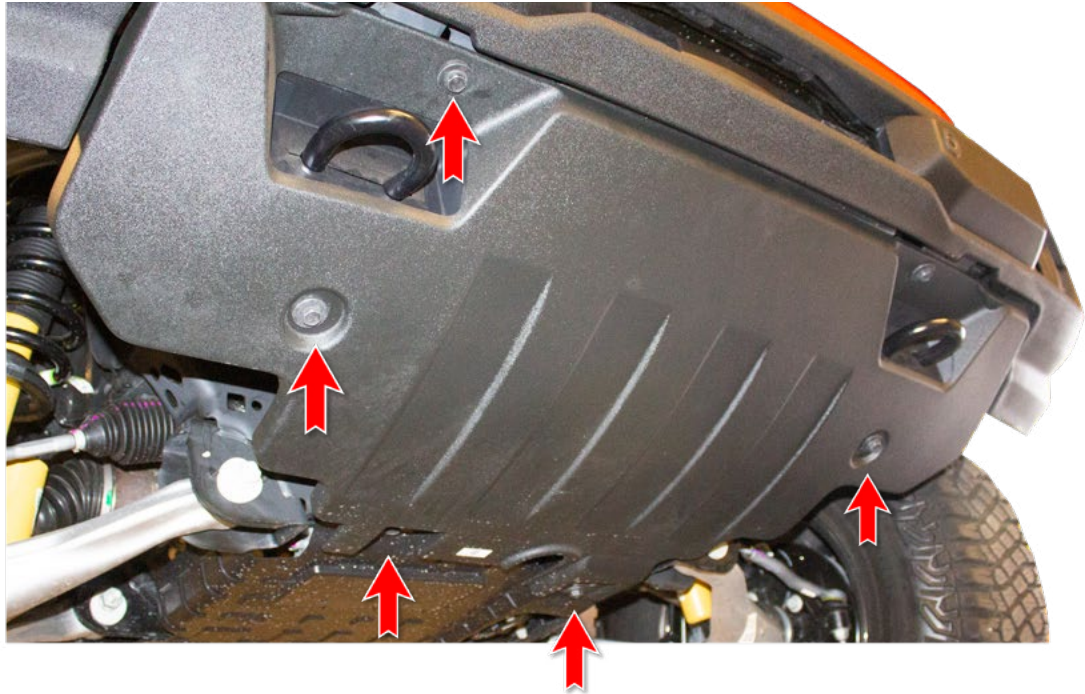
**ADD bumper install (Steps 16-20)**

**OEM Skid Plate Modifications (Step 21-24)**

**ADD Skid Plate install (Step 25-26)**

**Plastic Bumper Removal:**

1. Remove the 6 skid plate bolts (15mm) shown in (Fig A).



**Fig A**

2. Remove the 6 skid plate bolts (15mm) shown in (Fig A). Pull off the cover on each side of the bumper and unplug the sensors by spreading the sensor bezel tabs apart, which will release the tension and allow you to easily push back the sensors. (Fig B) **Make sure to keep track of the position/orientation of the parking sensors so that you can install them in the same position/orientation on your new bumper.**

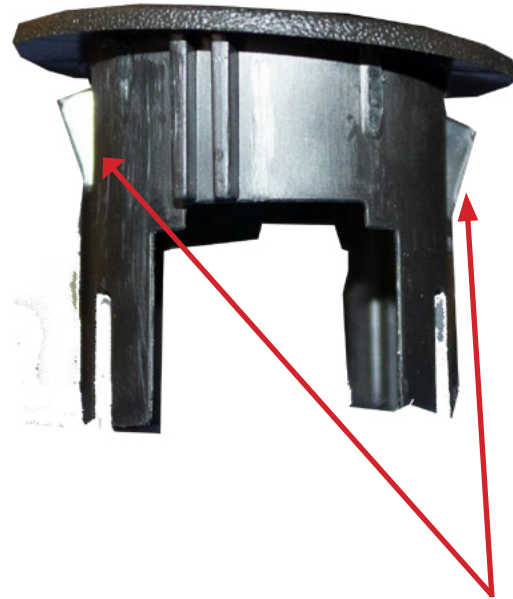
**Spread  
These  
Tabs**



**Fig B**



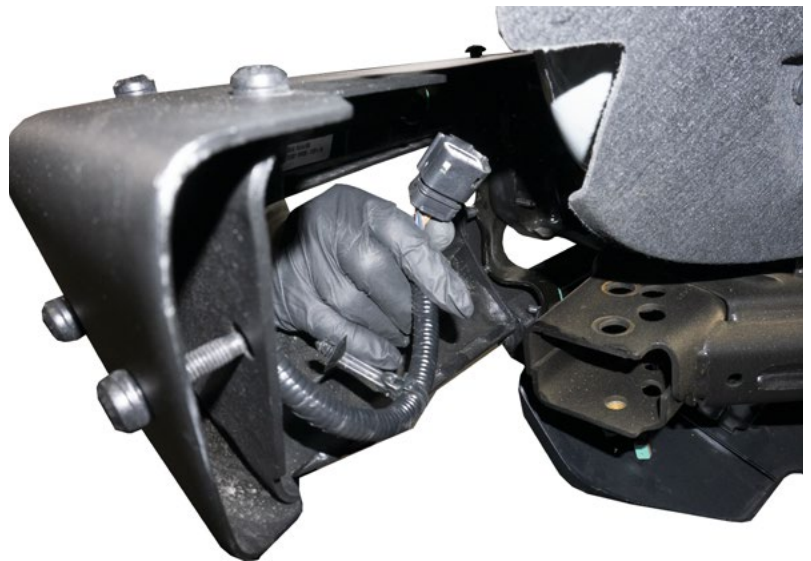
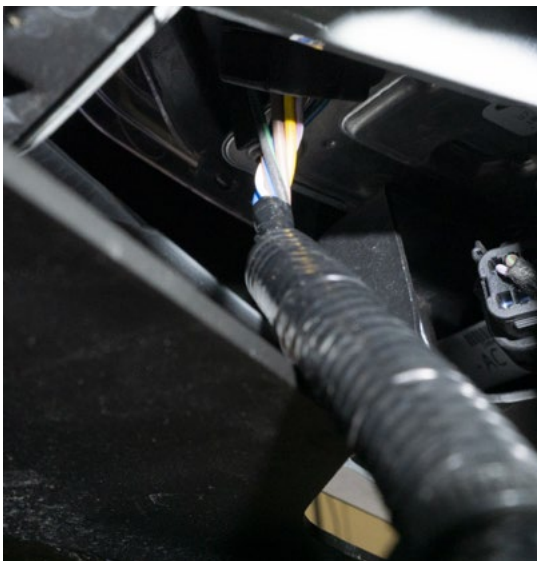
3. After the sensor have been removed squeeze the black sensor bezel tabs together, which will allow them to pull forward off the bumper. Keep track of the position/orientation of each sensor bezel so that you can install them in the same position/orientation on your new bumper. (Fig C)



**Fig C**

**Squeeze together**

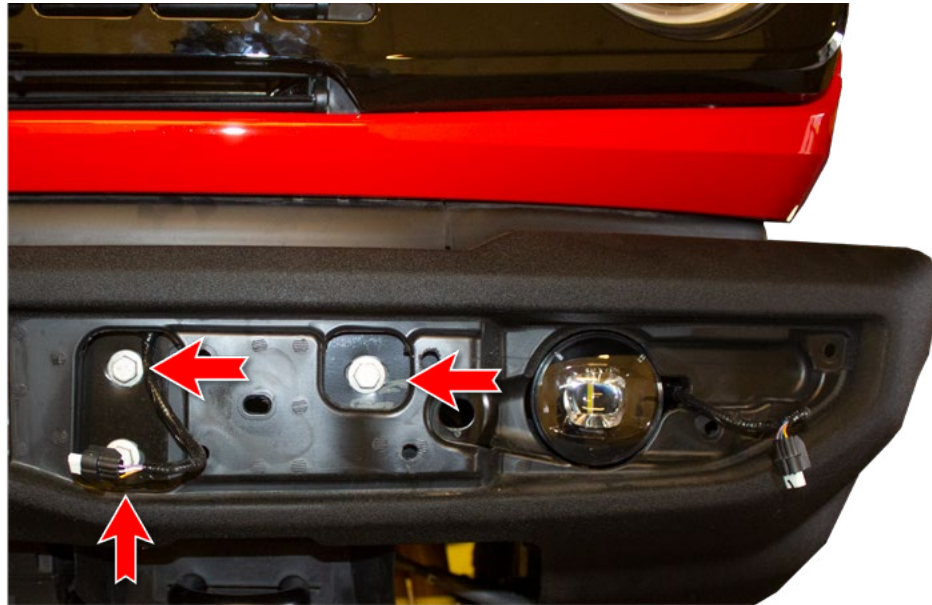
4. Disconnect the main wiring harness located on the driver side of the Bronco (**Found next to the headlight, up in the corner**). (Fig D)



**Fig D**

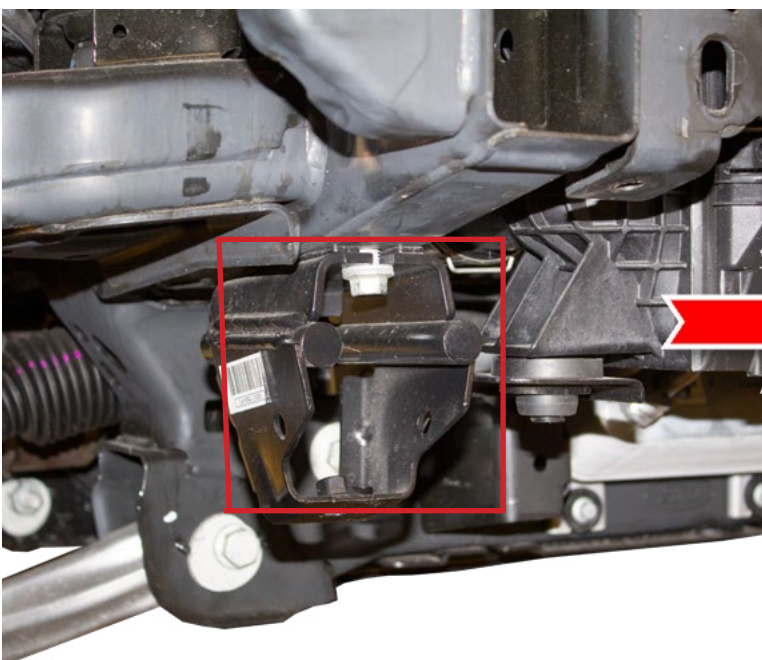


5. Before removing the 3 bolts that hold the OEM bumper in place located by the fog lights after the cover has been removed, (Fig E)

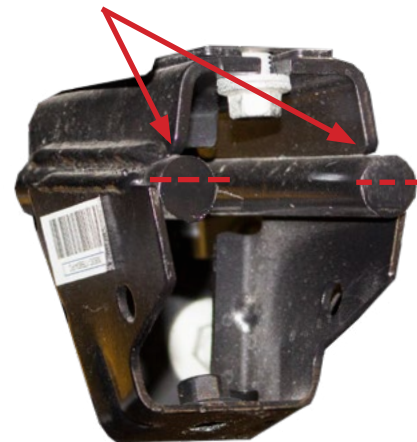


**Fig E**

6. After the OEM bumper has been removed cut the D-rings flush with the bracket to gain clearance for the ADD Stealth fighter. (Fig F)



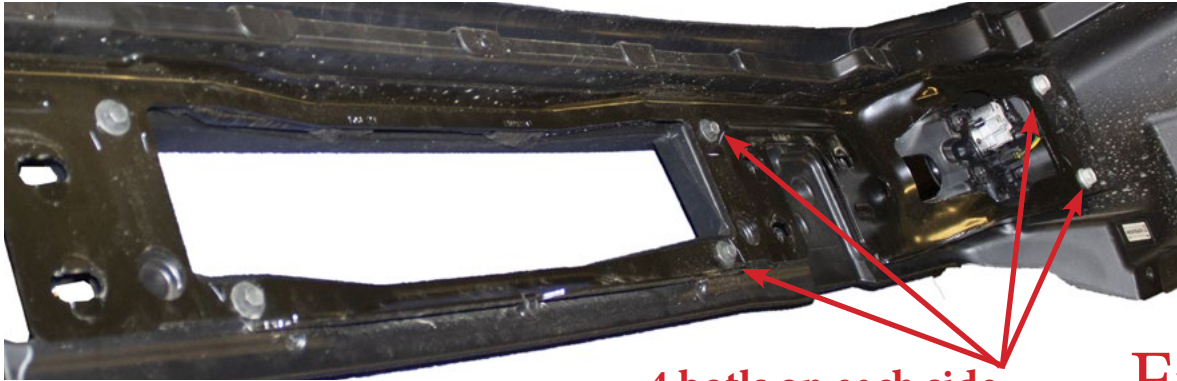
**Cut D-rings flush with bracket**



**Fig F**



7. There is a metal plate held in place by 8 bolts, 4 on each side. This plate needs to be removed to access the wiring harness for removal. (Fig G)



4 bolts on each side

Fig G

8. Remove wiring harness from the OEM bumper by disconnecting the fog light, then pulling out all the tabs that secure the harness in place. ( Fig H)

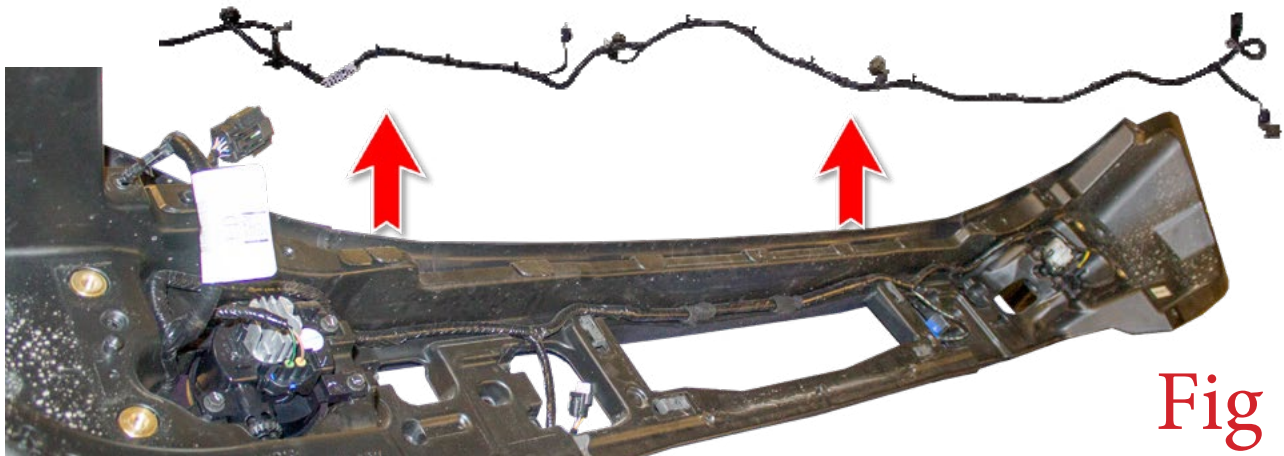


Fig H



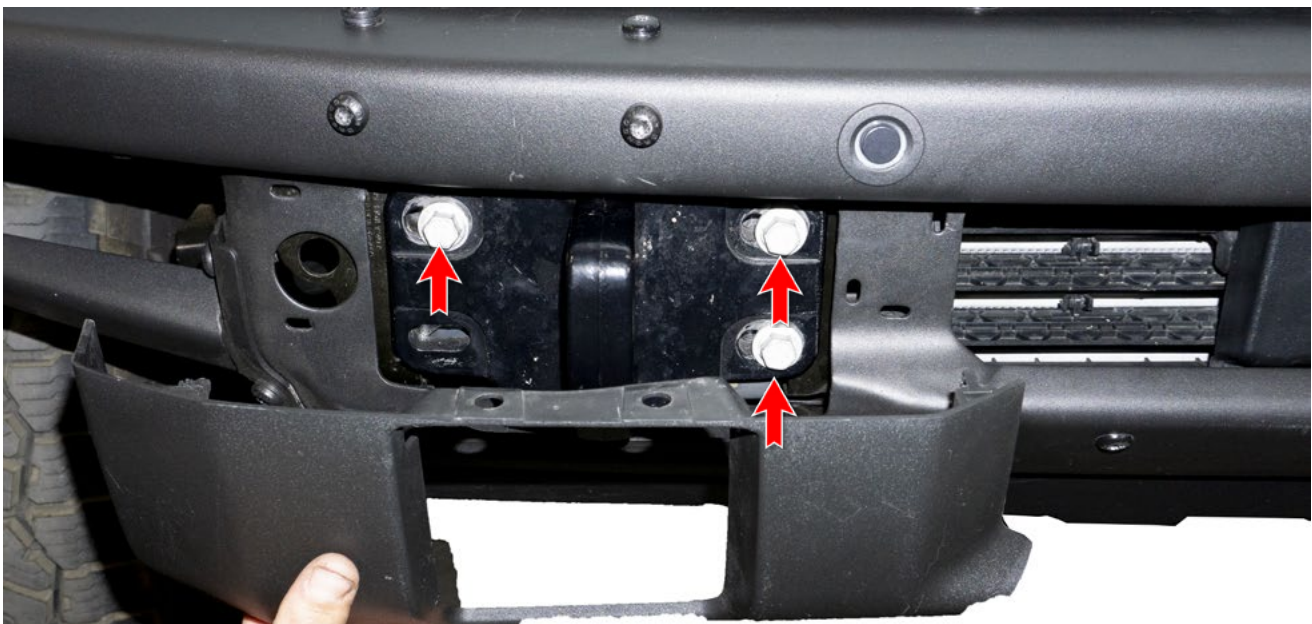
## Steel Bumper Removal:

9. There are 4 plastic clips on each side of the bumper that need to be removed to take off the plastic plate. (Fig I)



**Fig I**

10. After the plastic cover has been removed from both sides, the tow hooks will be visible. There are 3 bolts that hold the tow hooks on each side for a total of 6 bolts size 15mm. (Fig J)



**Fig J**



11. Disconnect the main wiring harness which is located next to the headlight, After the harness has been disconnected the bumper can be removed. (Fig K)



**Fig K**

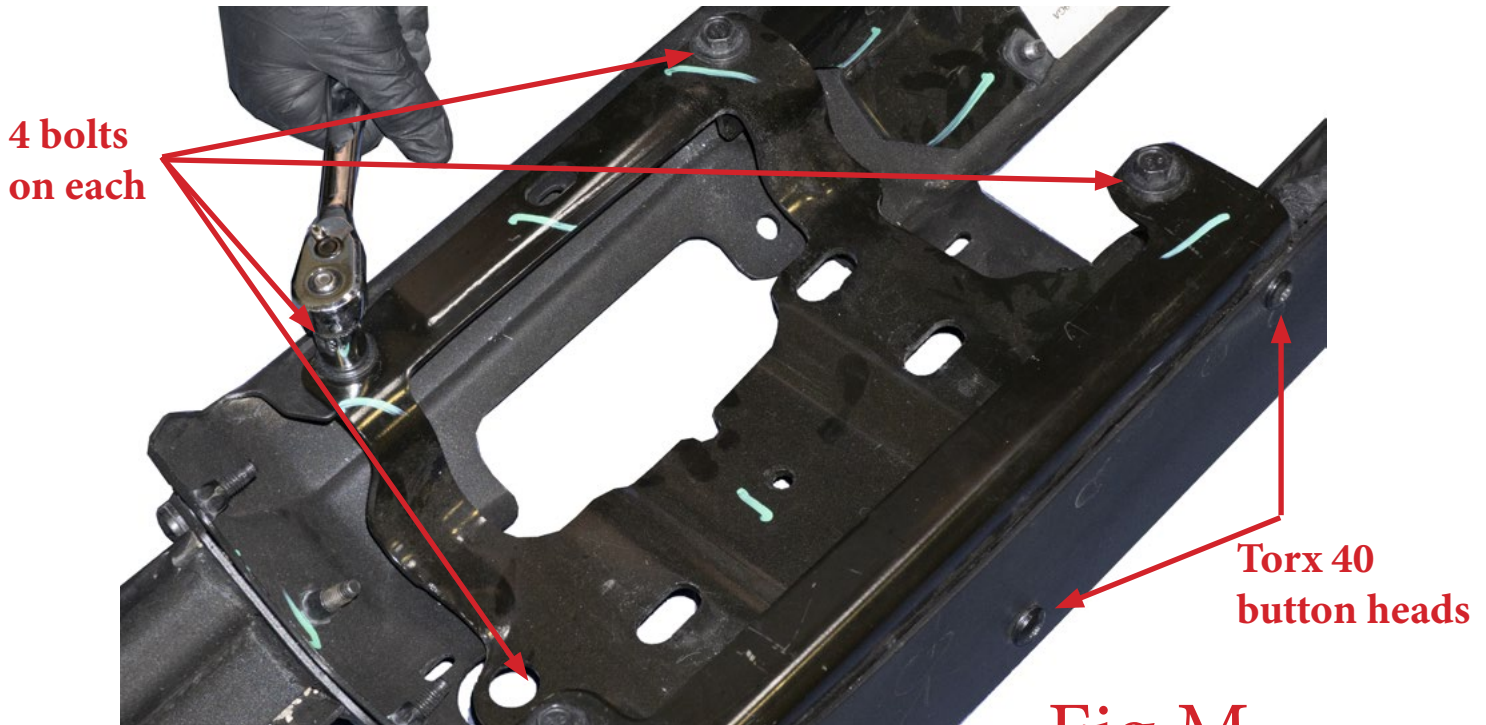


12. Remove the plastic intercooler shroud, no tools are required. It is clipped in place to remove just unclip and pull out. (Fig L)



**Fig L**

13. After the bumper has been removed, disassemble the metal plate that holds the sensors/wiring harness. To remove the metal plate, there are 4 bolts on each side size 13mm for a total of 8. Then there are 3 Torx-40 button heads that located on the top of bumper on each side for a total of 6 T-40 bolts that need to be removed for disassembly. (Fig M)



**Fig M**

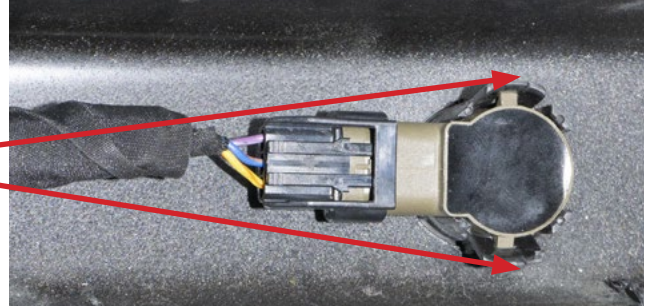




14. After the metal plate has been removed from both sides, disconnect the wiring harness and unplug the sensors from the bumper. (Fig N)



**Spread the tabs on each side of the sensor to release it and pull out**



**Fig N**



15. After the harness has been pulled then remove the sensor bezels by squeezing them together then pulling out of the bumper. (Fig O)



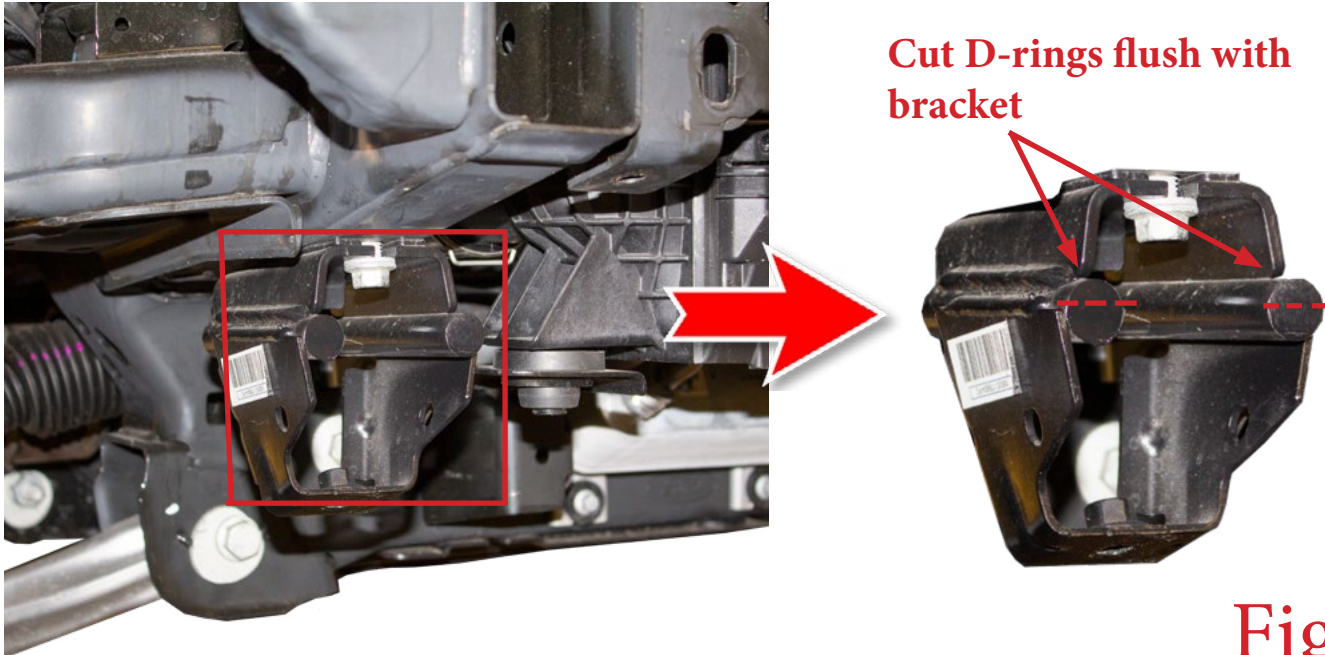
**Squeeze together on the  
inside of the bumper  
then push out**



**Fig O**



16. After the OEM bumper has been removed cut the D-rings flush with the bracket to gain clearance for the ADD Stealth fighter. (Fig P)



17. Install the 4 sensor bezels rings into the ADD rock fighter bumper, after the rings have been installed than put the sensor plugs in place following the same position/orientation as they were on the OEM bumper. (Fig Q)



18. After the sensor bezels have been installed transfer over the wiring harness into the ADD rock fighter bumper and zip tie to secure the harness. Also, now is a good time to install any additional lights into the bumper.



19. After the wiring harness has been installed, install the bottom support brackets using the OEM hardware removed from step 10 to the bottom of the frame horns as shown below in (fig R).





20. Install the rock fighter front bumper with the 6x provided 1/2-13 hardware using a 3/4 wrench and 3/4 socket.



21. using a 3/4 wrench and a 3/4 socket, Install the 2x provided 1/2-13 hardware for the bottom support bracket





22. (Optional) "For plastic skid plate" For The ADD Skid Plate skip to figure O" If you are going to use the stock OEM skid plate for the bronco along with the ADD Stealth fighter we recommend cutting the skid plate for better fitment. Mark a straight line about 1/4 inch away from the bolting point to be cut, also mark the corner area above the marked line. View the pictures for reference (Fig T)

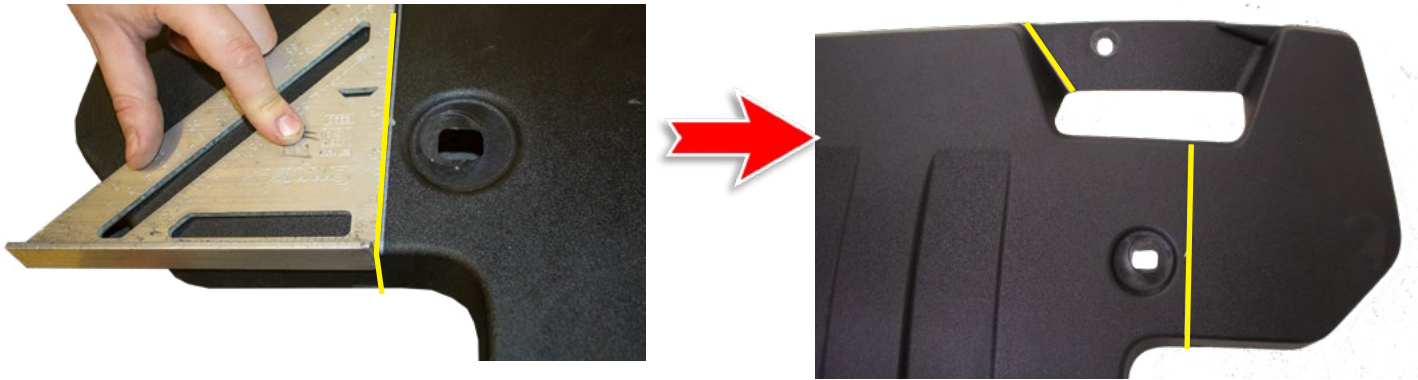


Fig S

23. There is a before and after that shows what needs to be cut. At the top of the skid plate mark a cut line where the skid plate curves down, this will free up room. Reference pictures below. (Fig U)

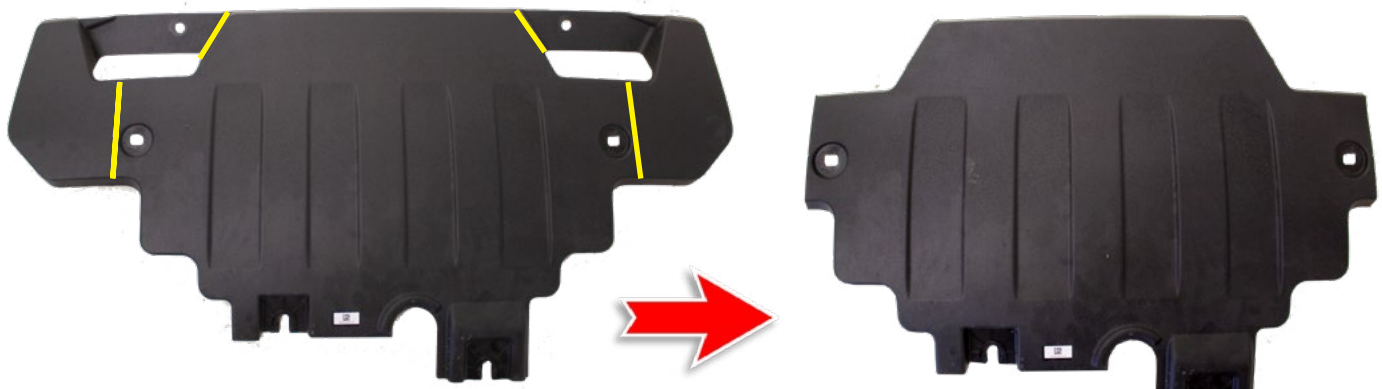


Fig T

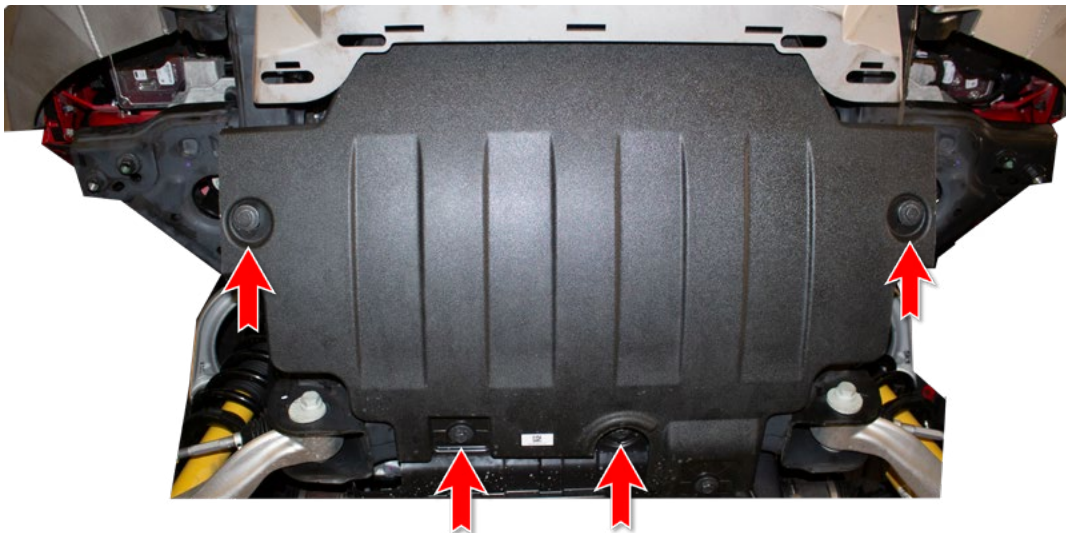


24. At the top of the skid plate mark a cut line from edge to edge above the curves that drops off, this will free up room. Follow the line off the edge as shown below. (Fig V)



**Fig U**

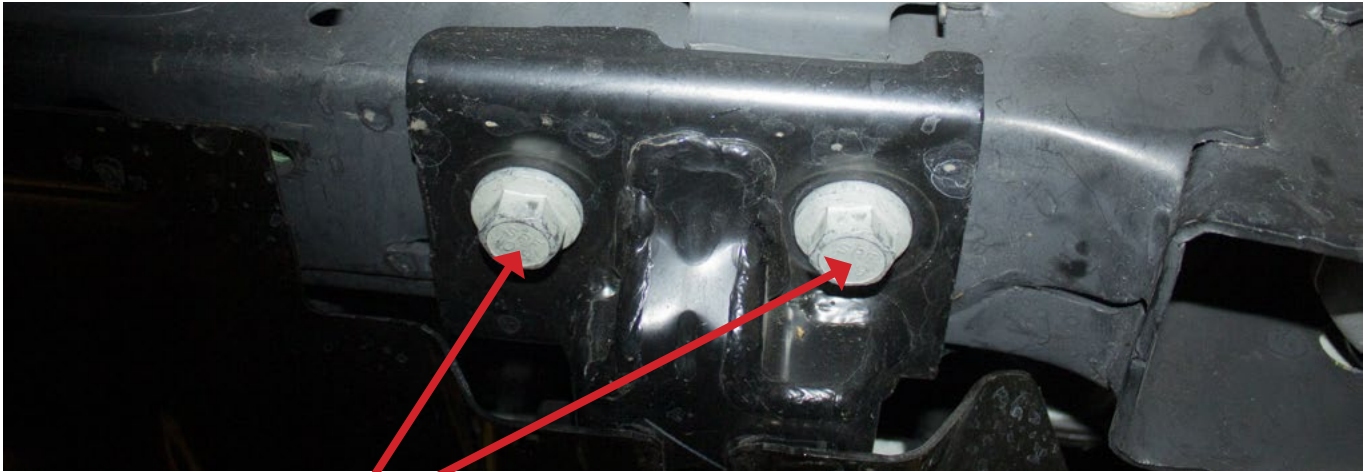
25. After the cuts have been made you are now ready to install the skid plate using the same hardware that was used to hold the skid plate in place. Instead of using 6 bolts now you will only be using 4 as shown below using the 15mm stock bolts. (Fig W)



**Fig V**



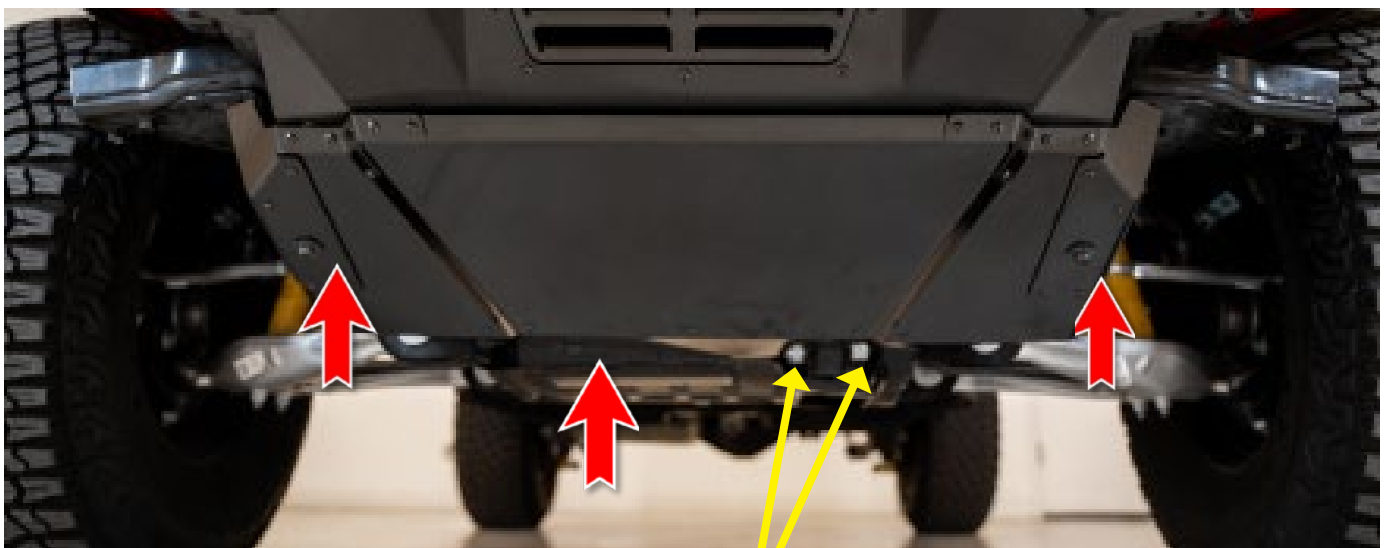
26. Before installing the ADD skid plate with the OEM hardware, there are 2 bolts next the OEM skid plate bolting location that you will need to remove and use for the install. These bolts are 18mm. (Fig X)



**18mm Bolts**

**Fig W**

27. (For ADD Skid Plate) You will use the stock OEM hardware to install the skid plate. (Fig Y)



**18mm bolts**

**Fig X**





28. Stand back and enjoy your new ADD Rock Fighter™ Front Bumper.
29. Check and re-tighten, if needed, all mounting bolts after 100 miles and periodically thereafter.

