



INSTALLATION GUIDE

2022-UP/GMC SIERRA 1500

STEALTH FIGHTER WINCH KIT

AC5708101NA



TOOLS REQUIRED

(Allen) 5/32
(Wrench) 7/16, 3/4
(Socket) 7/16, 3/4
Ratchet



TIME REQUIRED

- 20 Minutes



SKILL LEVEL



- Easy

****This installation requires 2 people for best results****

⚠️ WARNINGS/CAUTIONS BEFORE STARTING INSTALLATION ⚠️

-BEFORE YOU INSTALL THIS KIT-

Read and understand all instructions, warnings, cautions, & notes contained in this installation instruction guide. Consult your vehicle owner's manual for proper disconnection of electrical and lifting of vehicle if required for installation of this product.

This install may require some technical skills and knowledge of basic mechanical work. If you do not feel that you are capable of performing this install please take this product to a trained professional.

After reading this guide please contact us with any questions or concerns before installing product.

Customer Service (480) 671-0820

Addictive desert designs is not responsible for any bodily injury or harm to you or your vehicle as a result of an improper install.

Proper installation of this kit required knowledge of the factory recommended procedures for removal and installation of original equipment components.

We recommend that the factory shop manual and any special tools needed to service your vehicle be on hand during the installation. Installation of this kit without proper knowledge of the factory recommended procedures may affect the performance of these

components and the safety of the vehicle.

Inspect all contents of this package to make sure product is not damaged and all installation hardware has been included. If parts are missing from kit, please be prepared to provide the following information:

1. Name of purchase location
2. Bar Code on side of box
3. Date above bar code
4. Date inside box cover

***ALWAYS WEAR EYE PROTECTION
WHEN OPERATING POWER TOOLS***



INSTALLATION GUIDE

HARDWARE

A.



1/4-20 X 3/4" BUTTON HEAD BOLT BLACK

QTY: 5

A1.



1/4" FLAT WASHER BLACK

QTY: 5

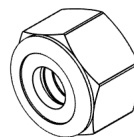
A2.



1/4-20 NYLON LOCK NUT BLACK

QTY: 5

B.



1/2-13" LOCK NUT YELLOW

QTY: 4

Reference this page throughout the install



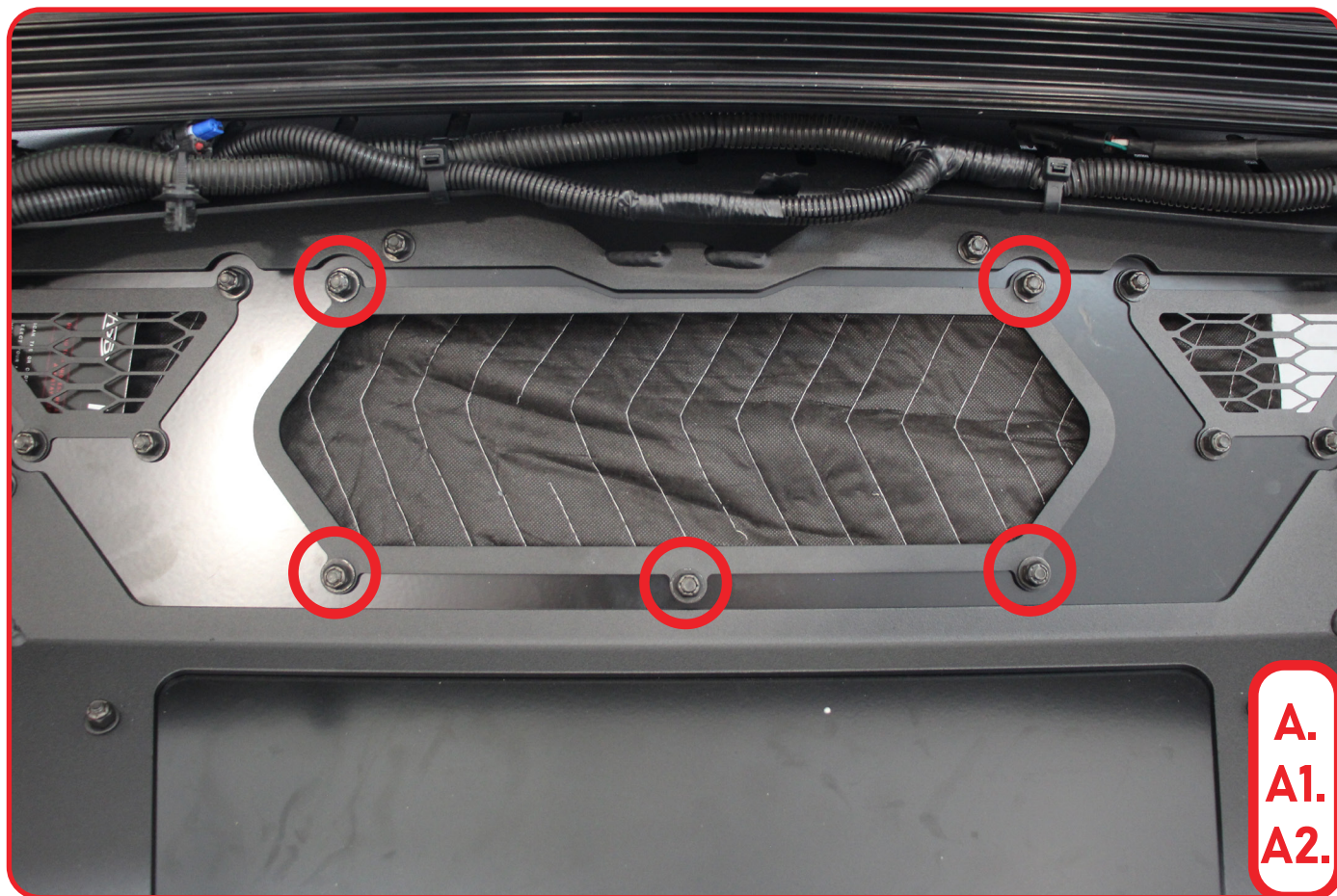
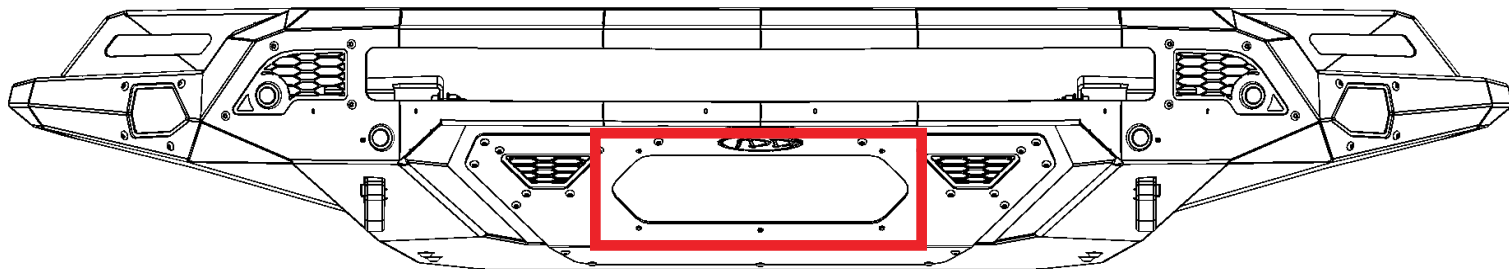
INSTALLATION GUIDE

STEALTH FIGHTER WINCH KIT 2022-UP/GMC SIERRA 1500

INSTALL

□ STEP 1

Using a (5/32 allen) and a (7/16 wrench), remove the center panel shown below. Install the provided open panel with the provided **(A, A1, A2)** 1/4" hardware as shown below.





INSTALLATION GUIDE

STEALTH FIGHTER WINCH KIT 2022-UP/GMC SIERRA 1500

INSTALL

□ STEP 2

Now would be a good time to install your fairlead and winch set up.





INSTALLATION GUIDE

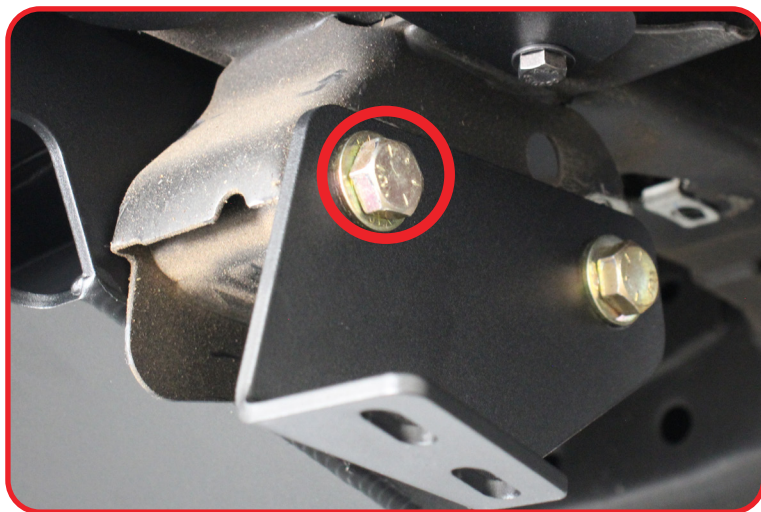
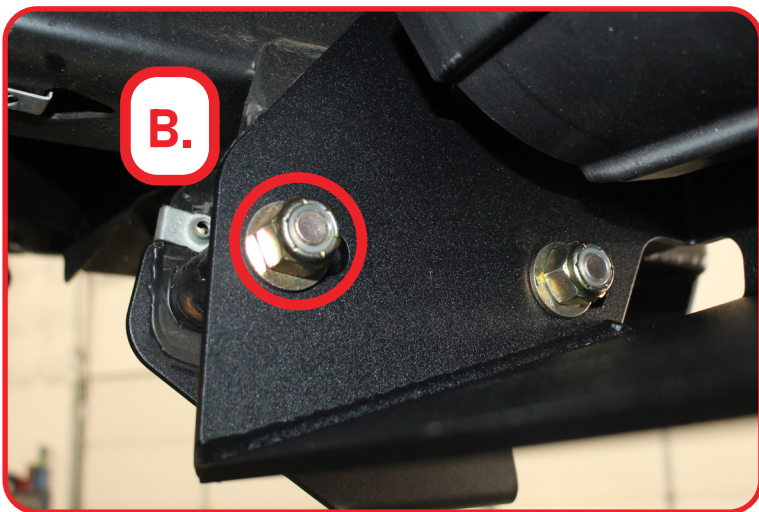
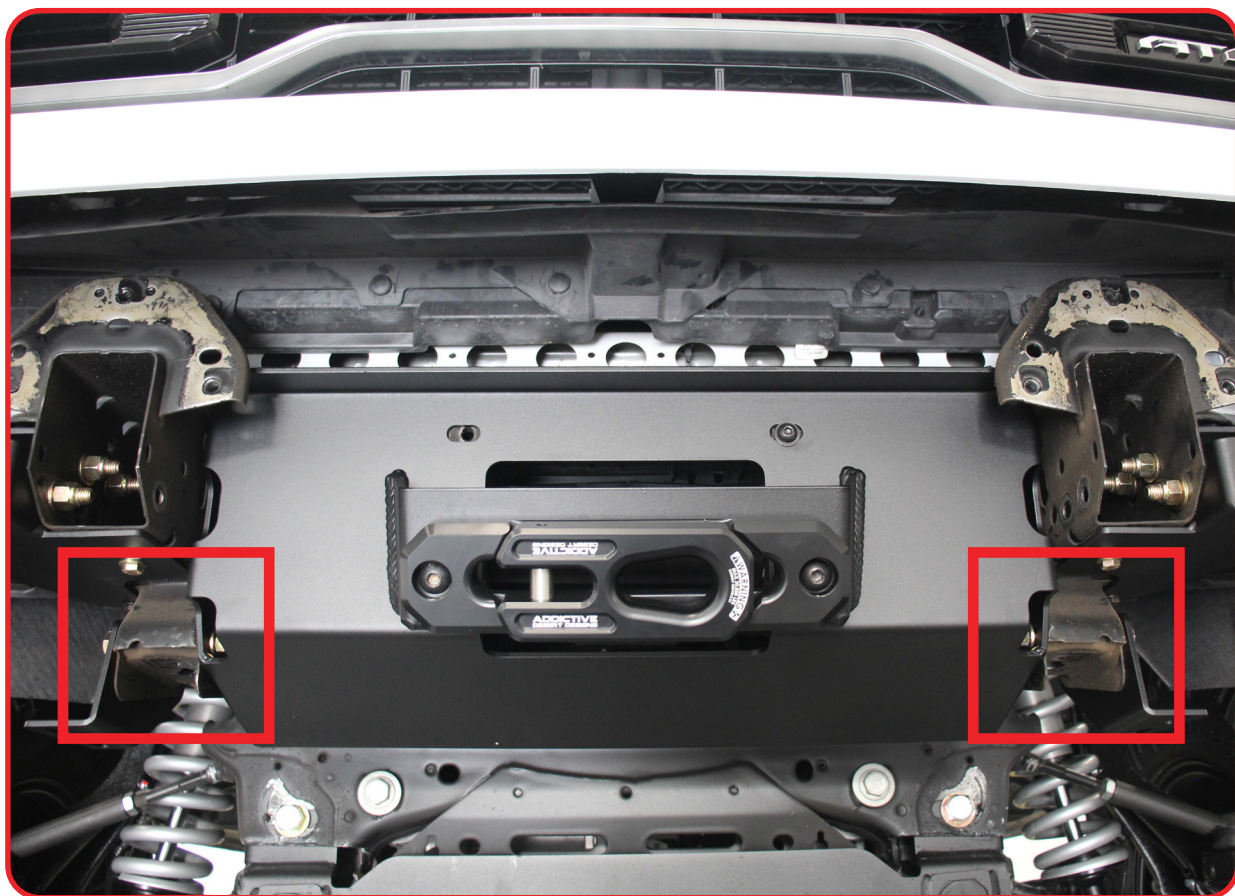
STEALTH FIGHTER WINCH KIT

2022-UP/GMC SIERRA 1500

INSTALL

□ STEP 3

Install the winch mount between the frame rails as shown below using the 4" bolts for the stealth fighter bumper using a new **(B)** 1/2" nut and tighten using a (3/4" socket). Return to Stealth Fighter Front Bumper install guide to finish install.





INSTALLATION GUIDE

STEALTH FIGHTER WINCH KIT 2022-UP/GMC SIERRA 1500

FINAL

□ STEP 4

Stand back and enjoy your new ADD Stealth Fighter Winch Kit.

Check and re-tighten all mounting bolts after 100 miles and periodically thereafter.



THIS PRODUCT IS PROTECTED BY ONE OR MORE U.S. PATENTS
WWW.ADDICTIVEDESERTDESIGNS.COM/PATENTS

FOR ADDITIONAL SUPPORT OR TECHNICAL QUESTIONS,
PLEASE CALL 480-671-0820 OR
EMAIL INFO@ADDICTIVEDESERTDESIGNS.COM