



# INSTALLATION GUIDE

## 23+ / FORD SUPER DUTY

### STEALTH FIGHTER REAR

R810081280103



### TOOLS REQUIRED

(Wrench) 14mm, 15mm, 21mm, 9/16, 3/4  
 (Socket) 14mm, 13mm, 15mm, 9/16, 3/4  
 (Deep Socket) 22mm  
 Ratchet  
 Flat Head/Fastener Remover



### TIME REQUIRED

- 2 hours for OEM Removal/Bumper Install  
 -1 Additional Hour to Wire Lights

**\*\*Labor Rates are based on a vehicle with no pre-existing damage. Wiring labor is based on a standard wiring procedure with light switches installed in an easily accessible location. Custom light triggering or switch mounting location will result in a greater labor charge.\*\***



### SKILL LEVEL



Easy

**\*\*This installation requires 2 people for best results\*\***

## ⚠️ WARNINGS/CAUTIONS BEFORE STARTING INSTALLATION ⚠️

-BEFORE YOU INSTALL THIS KIT-

**Read and understand all instructions,** warnings, cautions, & notes contained in this installation instruction guide. Consult your vehicle owner's manual for proper disconnection of electrical and lifting of vehicle if required for installation of this product.

This install may require some technical skills and knowledge of basic mechanical work. If you do not feel that you are capable of performing this install please take this product to a trained professional.

After reading this guide please contact us with any questions or concerns before installing product.

Customer Service (480) 671-0820

Addictive desert designs is not responsible for any bodily injury or harm to you or your vehicle as a result of an improper install.

Proper installation of this kit required knowledge of the factory recommended procedures for removal and installation of original equipment components.

We recommend that the factory shop manual and any special tools needed to service your vehicle be on hand during the installation. Installation of this kit without proper knowledge of the factory recommended procedures may affect the performance of these

components and the safety of the vehicle. Inspect all contents of this package to make sure product is not damaged and all installation hardware has been included. If parts are missing from kit, please be prepared to provide the following information:

1. Name of purchase location
2. Bar Code on side of box
3. Date above bar code
4. Date inside box cover

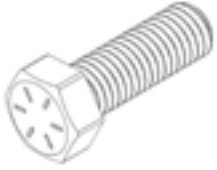
**\*ALWAYS WEAR EYE PROTECTION WHEN OPERATING POWER TOOLS\***



# INSTALLATION GUIDE

## HARDWARE

**A.**



1/2-13 X 1 1/2" HEX HEAD GRADE 5

QTY: 8

**A1.**



1/2" FLAT WASHER YELLOW

QTY: 6

**A2.**



1/2" NYLON LOCK NUT BLACK

QTY: 8

**B.**



1/2-13 X 1 1/2" CARRIAGE BOLT GRADE 8

QTY: 6

**B1.**



1/2-13 NYLON LOCK NUT YELLOW

QTY: 6

**B2.**



1/2" FLAT WASHER

QTY: 16

**B3.**



1/2" PUSH NUT

QTY: 6

**C.**



1/4" SNAP-IN NUT

QTY: 2

**C1.**



1/4 X 3/4" HEX HEAD SCREW

QTY: 2

### SENSOR GROMMETS SUPPLIED FOR NON SENSOR TRIMS



3/4" RUBBER SENSOR GROMMET  
QTY: 4



3/4" PLASTIC SENSOR GROMMET PLUG  
QTY: 4

**Reference this page throughout the install**



# INSTALLATION GUIDE

## STEALTH FIGHTER REAR 23+ / FORD SUPER DUTY

## REMOVAL

### □ STEP 1

Unplug the wiring harness located on the passenger side above the spare tire.



## STEALTH FIGHTER REAR 23+ / FORD SUPER DUTY

## REMOVAL

### □ STEP 2

Unplug the trailer plug located on the driver side above the spare tire.





# INSTALLATION GUIDE

STEALTH FIGHTER REAR  
23+ / FORD SUPER DUTY

## REMOVAL

**STEP 3**

Remove the mounting bolts located on the driver and passenger using a (22mm deep socket).



## STEALTH FIGHTER REAR 23+/FORD SUPER DUTY

## REMOVAL

### □ STEP 4

Remove the mounting bolts located below the license plate on the hitch using a (14mm socket). You can now remove the OEM bumper.





# INSTALLATION GUIDE

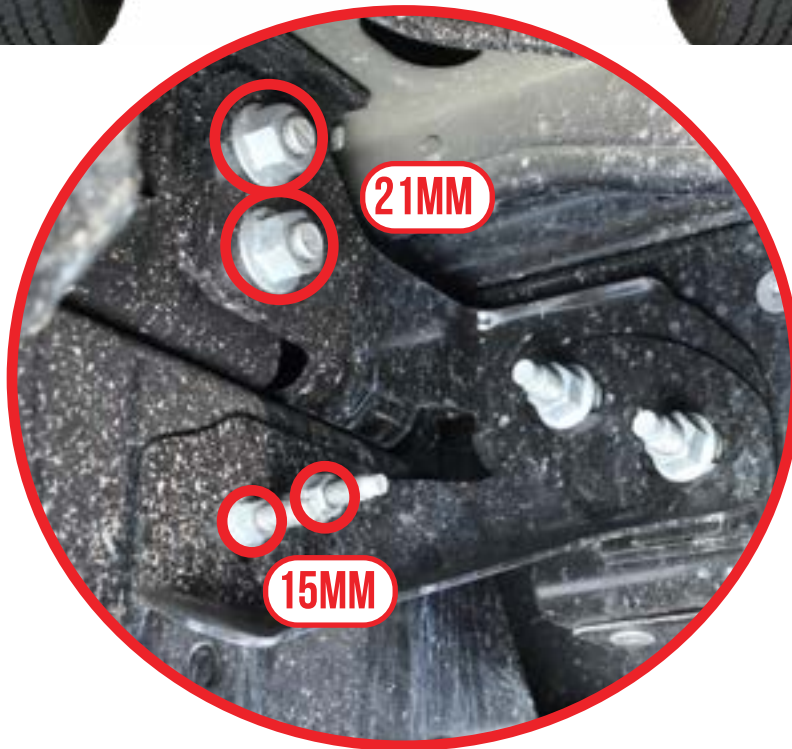
STEALTH FIGHTER REAR  
23+ / FORD SUPER DUTY

## REMOVAL

**□ STEP 5**

Remove the mounting bracket bolts shown below using a (15mm socket) and a (21mm socket).

**\*\*Keep this hardware for it will be used later on in the install\*\***

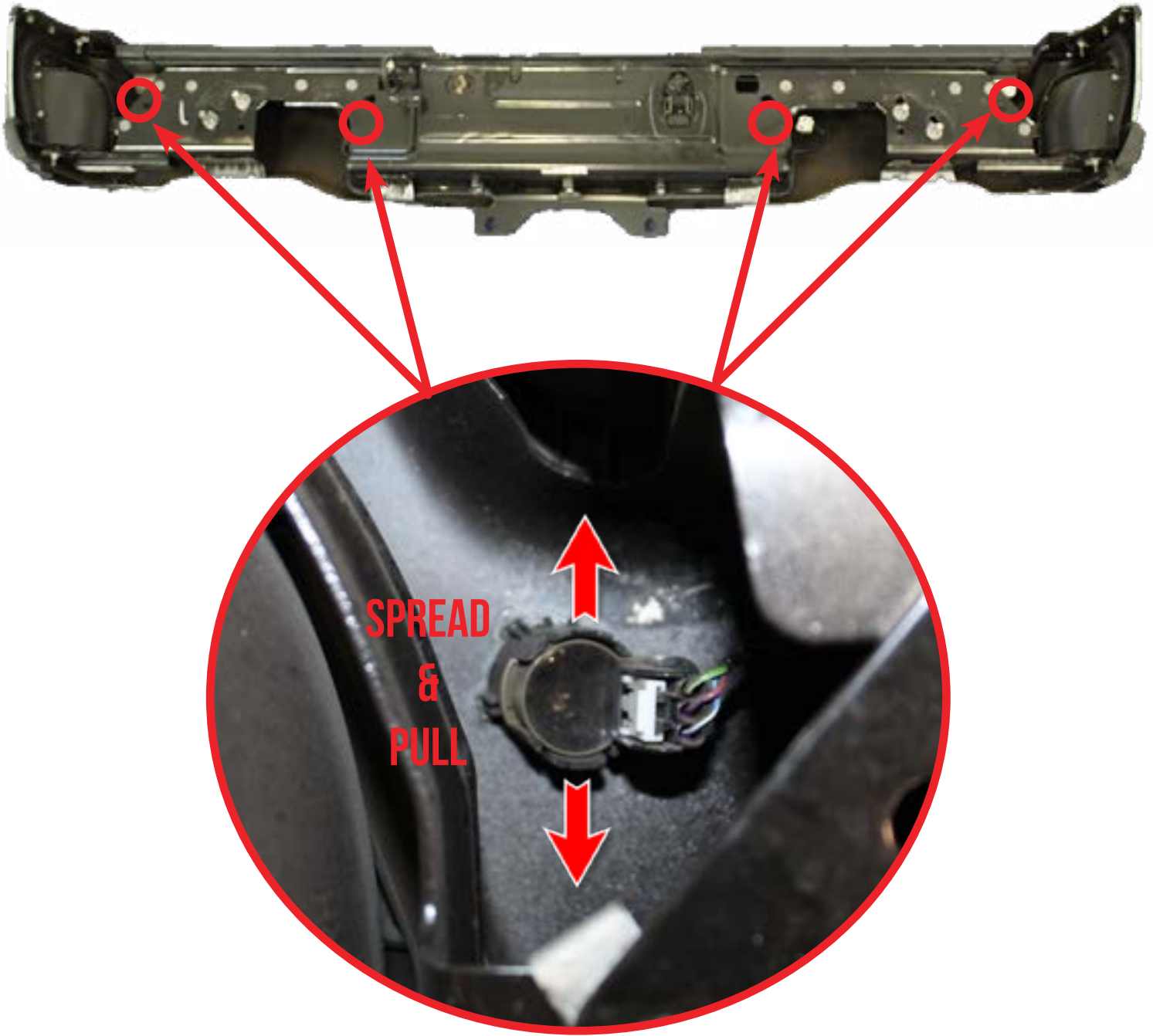


## STEALTH FIGHTER REAR 23+/FORD SUPER DUTY

## REMOVAL

### □ STEP 6

Remove the sensors and the bezels by spreading the tabs and pulling the sensor at the same time. (Remember the orientation for it will be important later in the install) **\*\*Be careful spreading the tabs due to breakage\*\***



## STEALTH FIGHTER REAR 23+ / FORD SUPER DUTY

## REMOVAL

### □ STEP 7

Remove the trailer plug by squeezing the metal tabs together and pushing the plug out.





# INSTALLATION GUIDE

STEALTH FIGHTER REAR  
23+ / FORD SUPER DUTY

## REMOVAL

**□ STEP 8**

Remove the spare tire plug using your key.

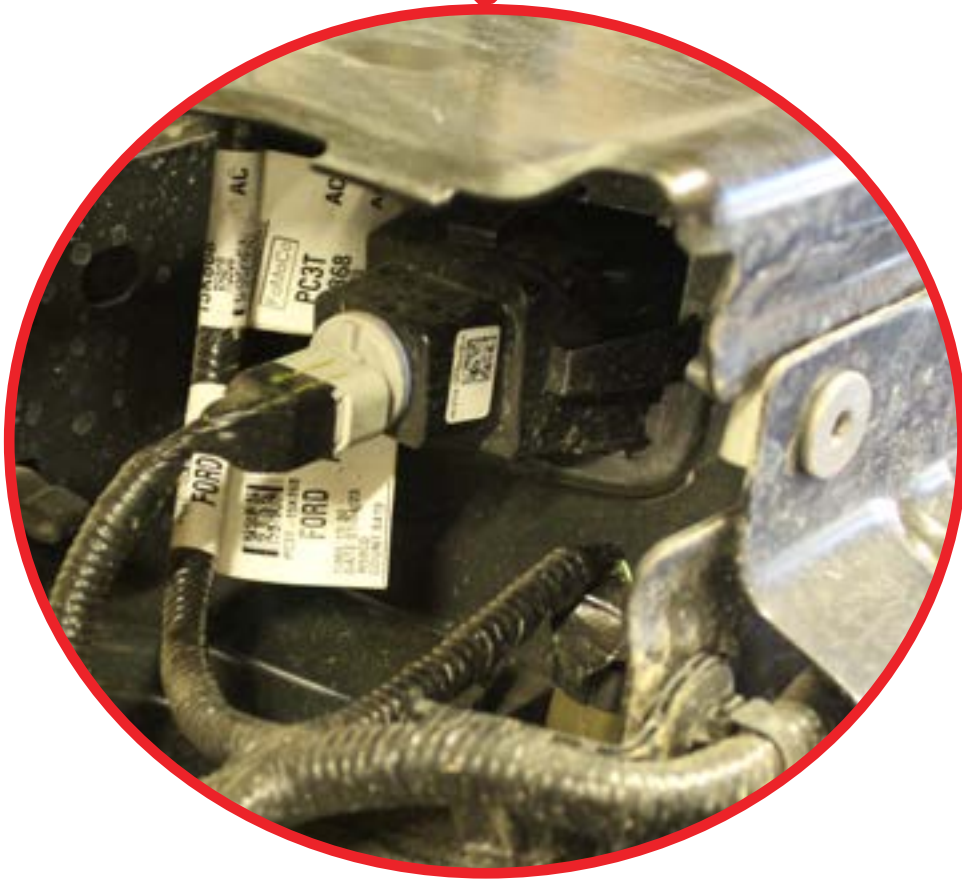


## STEALTH FIGHTER REAR 23+ / FORD SUPER DUTY

## REMOVAL

### STEP 9

Remove the license plate lights.



## STEALTH FIGHTER REAR 23+ / FORD SUPER DUTY

## INSTALL

### □ STEP 10

Install the trailer plug using a (flathead screw driver).





# INSTALLATION GUIDE

## STEALTH FIGHTER REAR 23+/FORD SUPER DUTY

## INSTALL

### □ STEP 11

Install the license plate lights using a (flathead screw driver) to pry tabs. **\*\*Careful prying tabs due to breakage\*\***



## STEALTH FIGHTER REAR 23+/FORD SUPER DUTY

## INSTALL

### □ STEP 12

Install the spare tire plug.

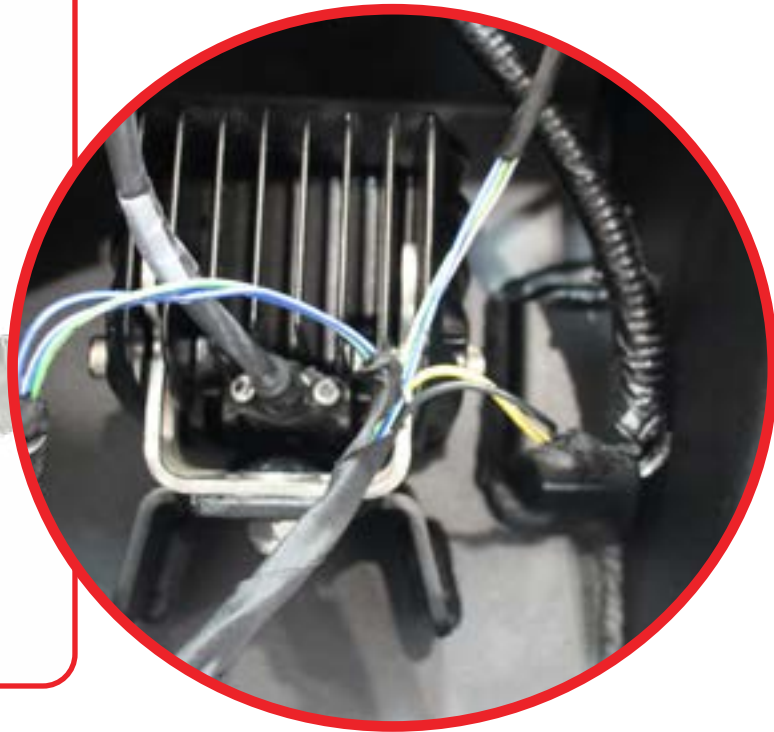
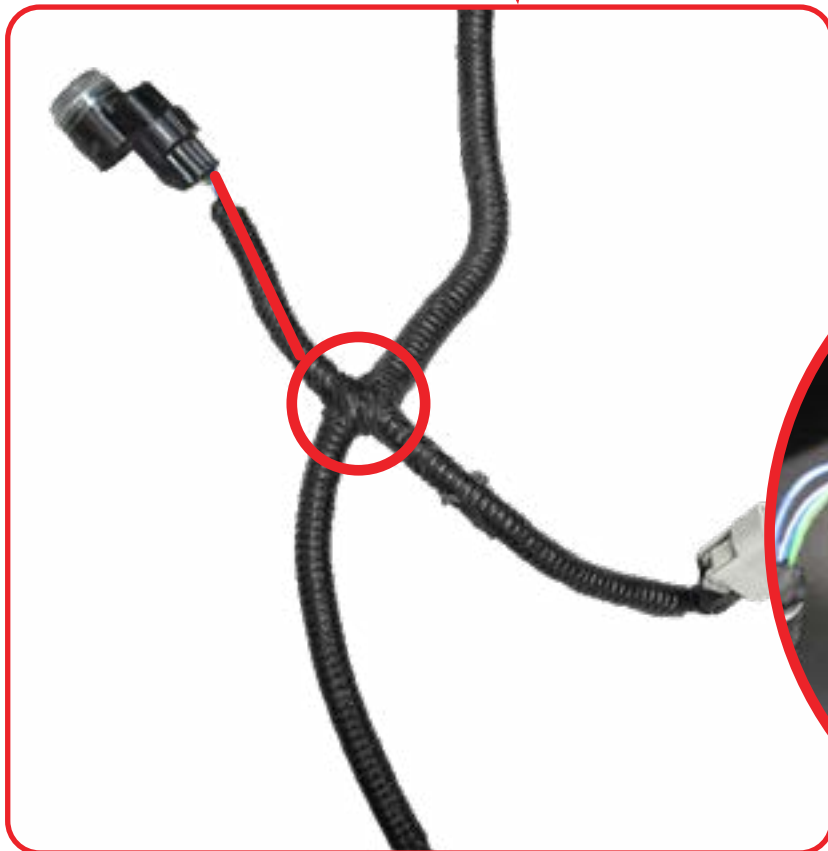


## STEALTH FIGHTER REAR 23+ / FORD SUPER DUTY

## INSTALL

### □ STEP 13

De loom the inner parking sensors by removing the electrical tape to expose as much wire for the outer sensors to reach. Next either re loom or electrical tape over the exposed wires.





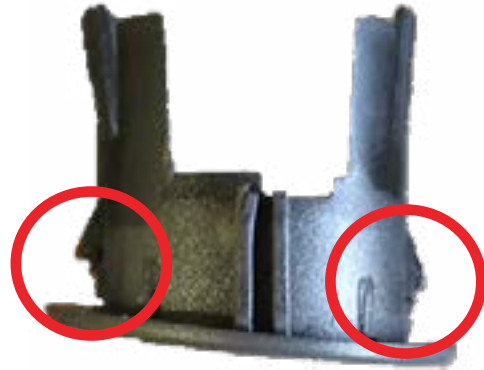
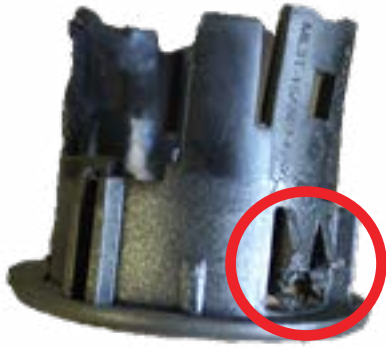
# INSTALLATION GUIDE

## STEALTH FIGHTER REAR 23+/FORD SUPER DUTY

## INSTALL

### □ STEP 14

Install the sensors and bezels into the ADD bumper. Reference next 4 pages for orientations. **\*\*If the bezels do not click into place you may have to trim the tabs to match the thickness of the bumper as shown below\*\***





# INSTALLATION GUIDE

STEALTH FIGHTER REAR  
23+ / FORD SUPER DUTY

## INSTALL





# INSTALLATION GUIDE

STEALTH FIGHTER REAR  
23+ / FORD SUPER DUTY

## INSTALL

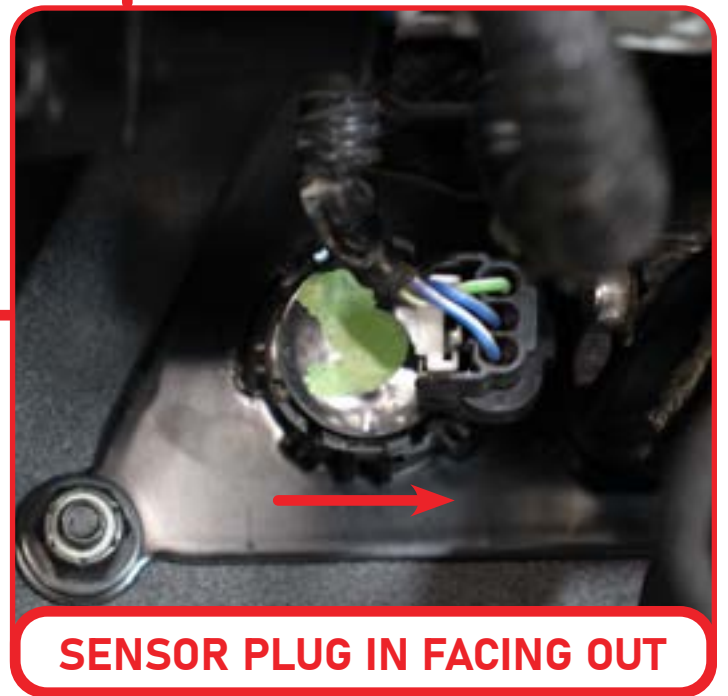




# INSTALLATION GUIDE

STEALTH FIGHTER REAR  
23+ / FORD SUPER DUTY

## INSTALL



**SENSOR PLUG IN FACING OUT**



# INSTALLATION GUIDE

STEALTH FIGHTER REAR  
23+ / FORD SUPER DUTY

## INSTALL

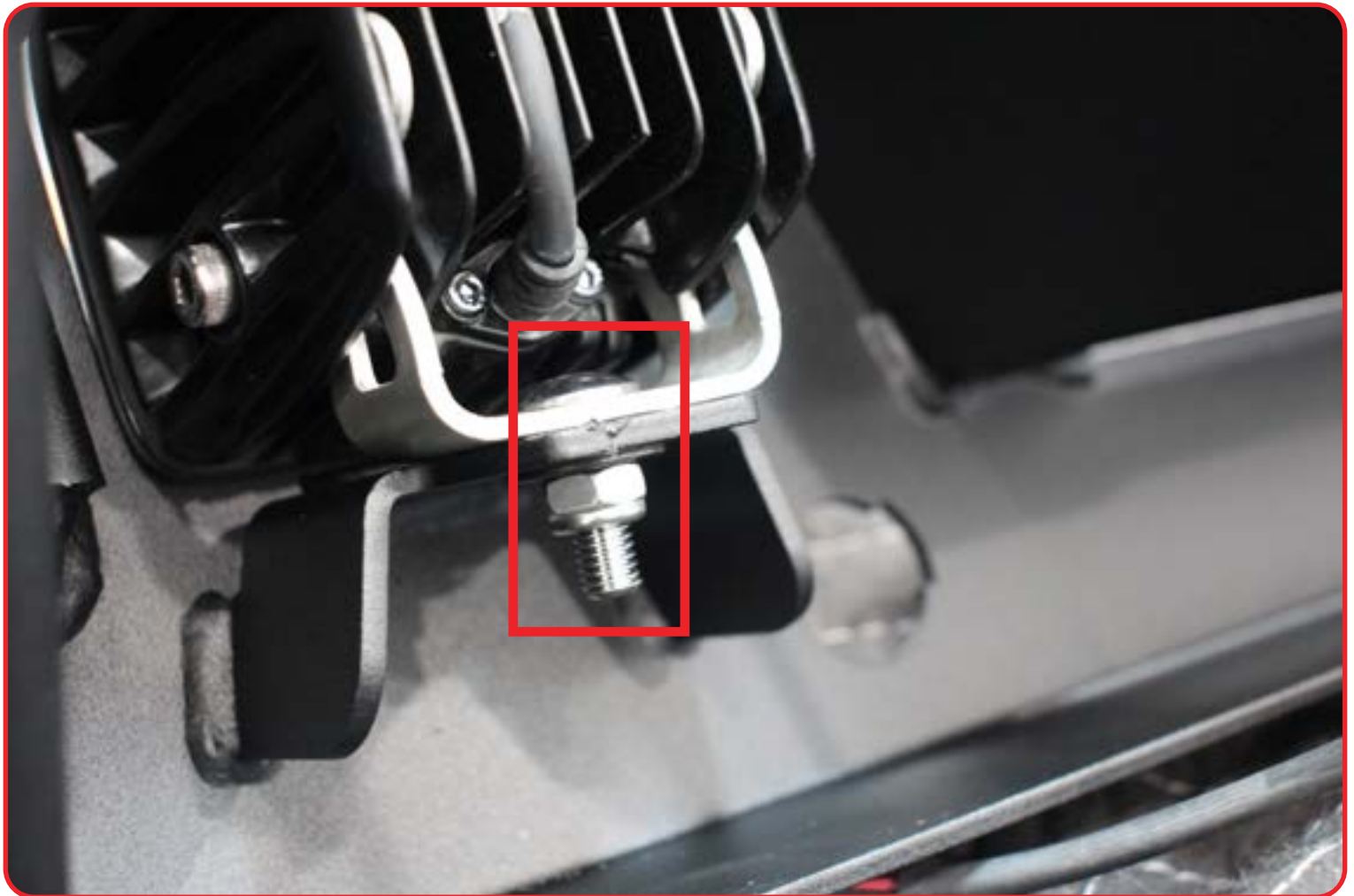


## STEALTH FIGHTER REAR 23+ / FORD SUPER DUTY

## INSTALL

### □ STEP 15

Install the light pods using the hardware the light provided.





# INSTALLATION GUIDE

STEALTH FIGHTER REAR  
23+ / FORD SUPER DUTY

## INSTALL

**STEP 16**

Install the mounting brackets using the OEM hardware removed from **step 5** using a (21mm Socket).





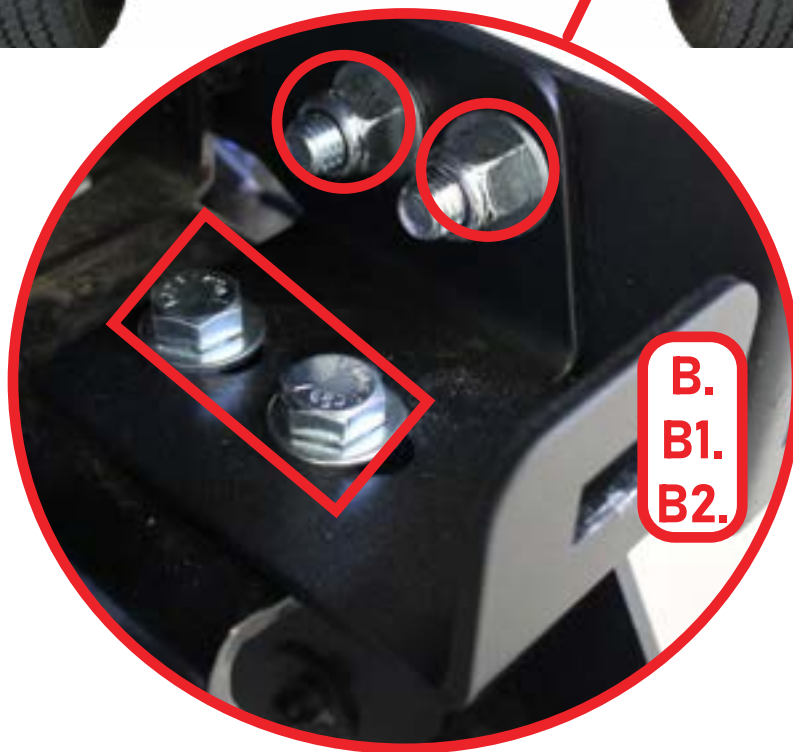
# INSTALLATION GUIDE

## STEALTH FIGHTER REAR 23+/FORD SUPER DUTY

## INSTALL

### □ STEP 17

Install the mounting bracket shown below with the provided (B, B1, B2) 1/2" hardware using a (3/4 wrench) and a (3/4 socket).



B.  
B1.  
B2.



# INSTALLATION GUIDE

## STEALTH FIGHTER REAR 23+ / FORD SUPER DUTY

## INSTALL

### □ STEP 18

Install your ADD bumper with the provided hardware (**B, B1, B2**) using a (3/4 socket) and a (3/4 wrench).





# INSTALLATION GUIDE

STEALTH FIGHTER REAR  
23+ / FORD SUPER DUTY

## INSTALL

**STEP 19**

Plug in the trailer plug.





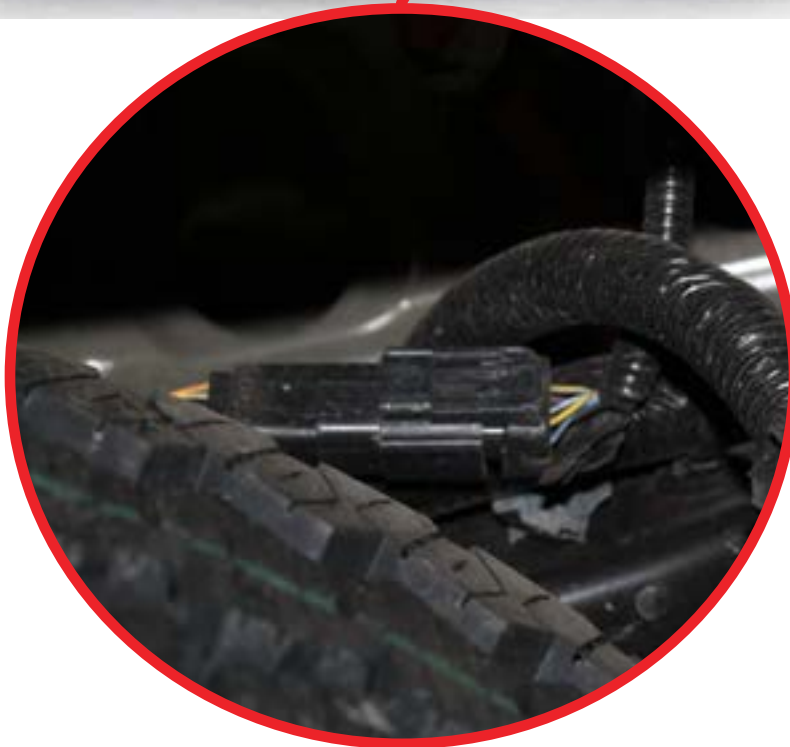
# INSTALLATION GUIDE

## STEALTH FIGHTER REAR 23+ / FORD SUPER DUTY

## INSTALL

### □ STEP 20

Install the wiring harness plug in.





# INSTALLATION GUIDE

## STEALTH FIGHTER REAR 23+ / FORD SUPER DUTY

## FINAL

### STEP 21

Stand back and enjoy your new ADD Stealth Fighter Rear Bumper.

Check and re-tighten all mounting bolts after 100 miles and periodically thereafter.



THIS PRODUCT IS PROTECTED BY ONE OR MORE U.S. PATENTS  
[WWW.ADDICTIVEDESERTDESIGNS.COM/PATENTS](http://WWW.ADDICTIVEDESERTDESIGNS.COM/PATENTS)

FOR ADDITIONAL SUPPORT OR TECHNICAL QUESTIONS,  
PLEASE CALL 480-671-0820 OR  
EMAIL [INFO@ADDICTIVEDESERTDESIGNS.COM](mailto:INFO@ADDICTIVEDESERTDESIGNS.COM)