

21+/FORD BRONCO

CENTER CONSOLE

AC2302201NA



TOOLS REQUIRED

(Allen wrenches) 1/8, 5/32
 (Drill bit) 25/64
 Rivet tool
 Marker
 Drill



TIME REQUIRED

- 1 hours



SKILL LEVEL

-Easy/Intermediate



INCLUDED IN KIT

- 8- Button Head Bolts (1/4-20 X 1/2)
- 8- Rivet Nut (1/4-20 Large Flange 0.165")
- 8- Flat Washer (M6)
- 4- Button Head Bolt (10-24 X 3/8)

⚠️ WARNINGS/CAUTIONS BEFORE STARTING INSTALLATION ⚠️

-BEFORE YOU INSTALL THIS KIT-

Read and understand all instructions, warnings, cautions, & notes contained in this installation instruction guide. Consult your vehicle owner's manual for proper disconnection of electrical and lifting of vehicle if required for installation of this product.

This install may require some technical skills and knowledge of basic mechanical work. If you do not feel that you are capable of performing this install please take this product to a trained professional.

After reading this guide please contact us with any questions or concerns before installing product.
 Customer Service (480) 671-0820

Addictive desert designs is *not* responsible for any bodily injury or harm to you or your vehicle as a result of an improper install.

Proper installation of this kit required knowledge of the factory recommended procedures for removal and installation of original equipment components.

We recommend that the factory shop manual and any special tools needed to service your vehicle be on hand during the installation. Installation of this kit without proper knowledge of the factory recommended procedures may affect the performance of these components and the safety of the vehicle.

Inspect all contents of this package to make sure product is not damaged and all installation hardware has been included. If parts are missing from kit, please be prepared to provide the following information:

1. Name of purchase location
2. Bar Code on side of box
3. Date above bar code
4. Date inside box cover

ALWAYS WEAR EYE PROTECTION WHEN OPERATING POWER TOOLS

CENTER CONSOLE
21+/FORD BRONCO

STEP 1

Install the ADD logo using the provided 10-24 x 3/8" Stainless steel Button Head Bolts using a (1/8 Allen Head).



CENTER CONSOLE 21+/FORD BRONCO

□ STEP 2

Hold up the panels with your hand and with the other, mark out your holes with a marker.



CENTER CONSOLE 21+/FORD BRONCO

STEP 3

Drill the marked holes from **step 2** by using a (25/64 drill bit). (Do not drill into the panel more than a 1/4" due to the components inside the center console)



CENTER CONSOLE 21+/FORD BRONCO

□ STEP 4

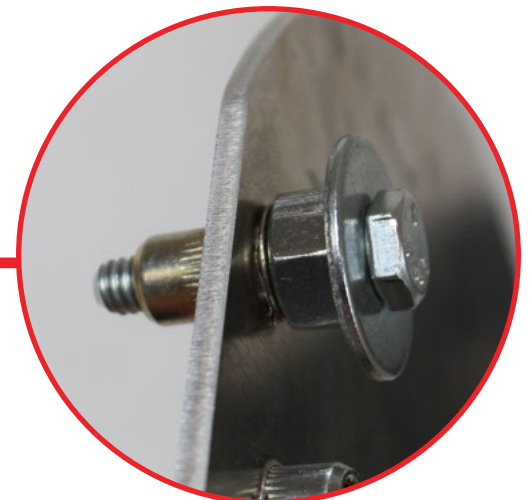
Using a (Rivet Nut Tool) install the provided 1/4-20 Rivet nuts in the holes drilled in **step 3**.



TECH TIP

If you do not have a rivet nut tool, use a 1/4-20 x 3/4 hex head bolt, a 1/4 washer, and a 3/8 nut to install the rivet nuts. Tighten using a (9/16 wrench) and a (7/16 socket) on a impact.

****HARDWARE NOT INCLUDED****



CENTER CONSOLE 21+/FORD BRONCO

STEP 5

Install the molle panels on both sides with the provided 1/4-20 Button Head Bolt and M6 washers using a (5/32 Hex).



CENTER CONSOLE 21+/FORD BRONCO

STEP 6

Stand back and enjoy your new ADD Center Console.

Check and re-tighten, if needed, all mounting bolts after 100 miles and periodically thereafter.



THIS PRODUCT IS PROTECTED BY ONE OR MORE U.S. PATENTS
WWW.ADDICTIVEDESERTDESIGNS.COM/PATENTS

FOR ADDITIONAL SUPPORT OR TECHNICAL QUESTIONS,
PLEASE CALL 480-671-0820 OR
EMAIL INFO@ADDICTIVEDESERTDESIGNS.COM