

Preparation:

- Disconnect the negative battery terminal. Park the vehicle on level ground and set the emergency brake.
- We recommend reading through the installation instructions in whole before performing the work.
- Estimated Installation Time: **2 Hours**

*****This installation requires 2 people for best results*****

You will need the following tools:

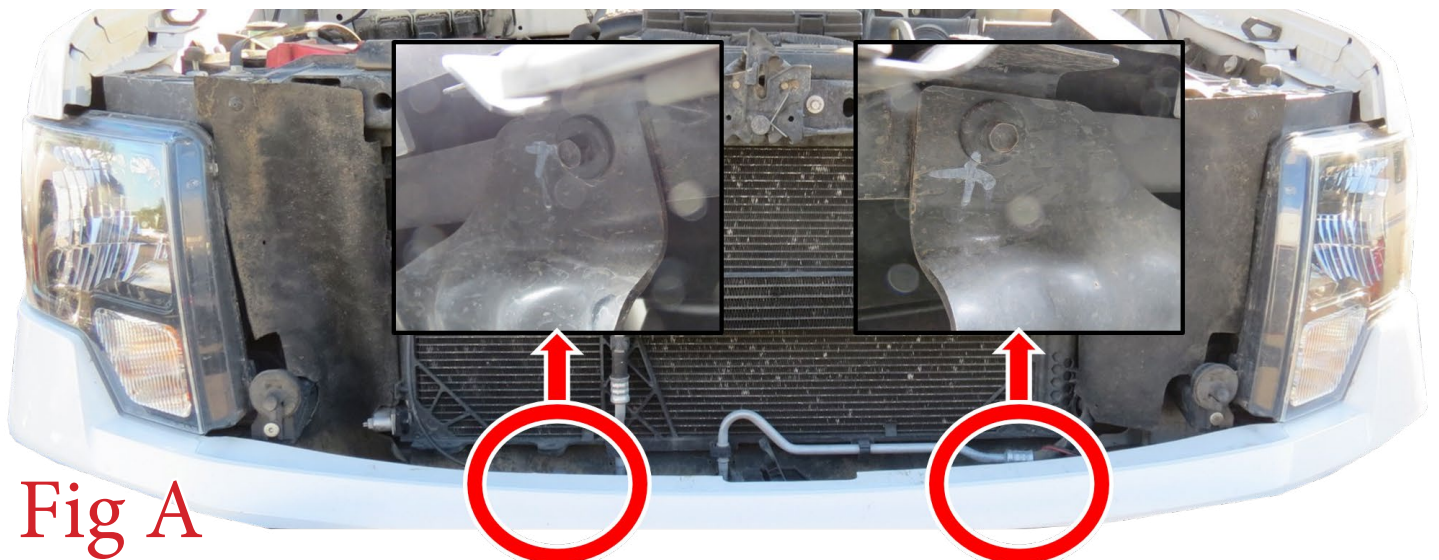
- | | | |
|-------------------------|-----------------------------|---------------|
| - Ratchet | - 3/4" Socket & Wrench | - 21mm Socket |
| - 7/16" Socket & Wrench | - 7/32" Allen Wrench/Socket | - 10mm Socket |
| - Drill | - 1/2" Drill Bit | |

Included in Kit:

- | | |
|--|--------------------------------------|
| 10 - Hex Head Bolts (1/2"-13 x 1 1/2") | 20 - Flat Washers (1/2") |
| 10 - Nylon Lock Nuts (1/2"-13) | 2 - Aluminum Valance Brackets |
| 2 - Hex Head Bolts (1/4"-20 x 1 1/4") | 4 - Flat Washers (1/4") |
| 2 - Nylon Lock Nuts (1/4"-20) | 2 - U-Nuts (3/8"-16) |
| 2 - Button Head Bolts (3/8"-16 x 1") | 2 - Flat Washers (3/8") |
| 2 - Skid Plate Bracket (For Winch Mount Bumpers Only) | |

Removal:

1. With the hood popped, come from the top and remove the two 10mm bolts that are on the backside of the valance. (Fig A)



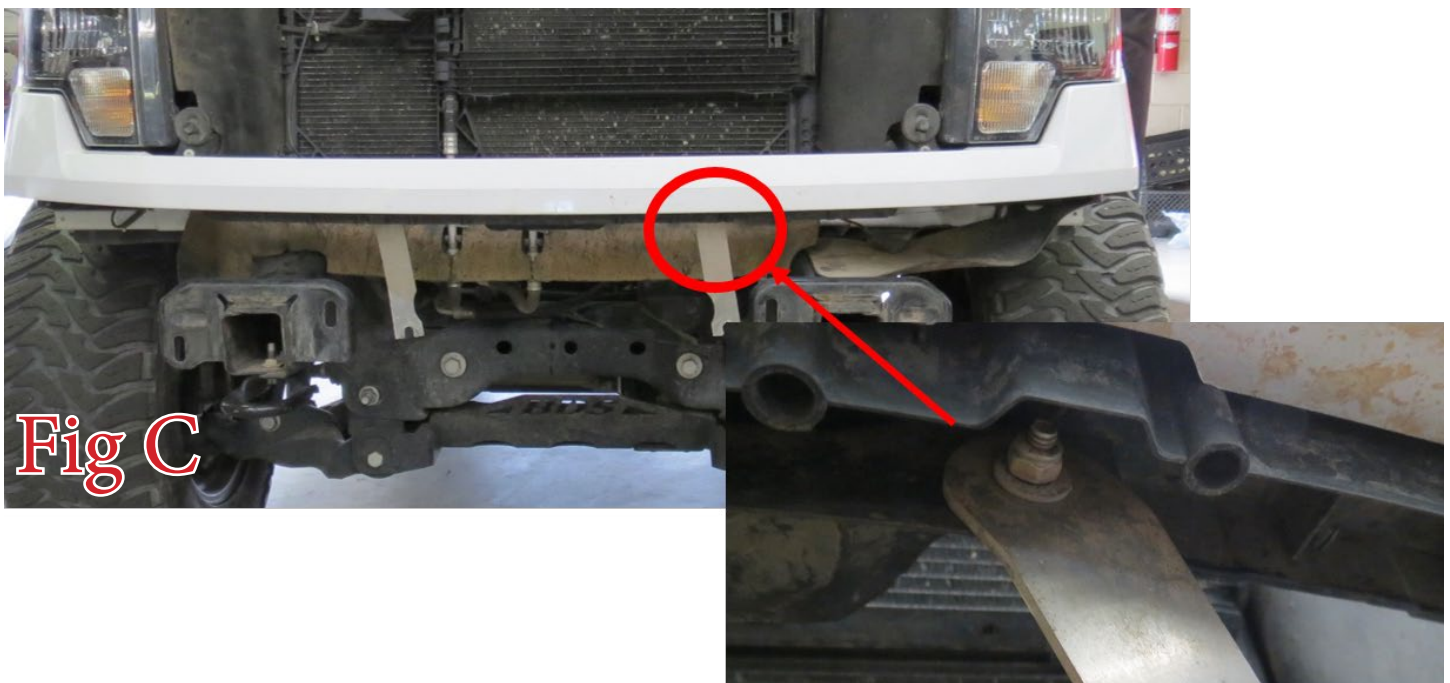
2. From underneath the truck, remove any fog light connectors if your vehicle is equipped with fog lights.
3. From underneath the truck, remove the four 21mm nuts (2 per side) on the back side of the frame horns. (Fig B)



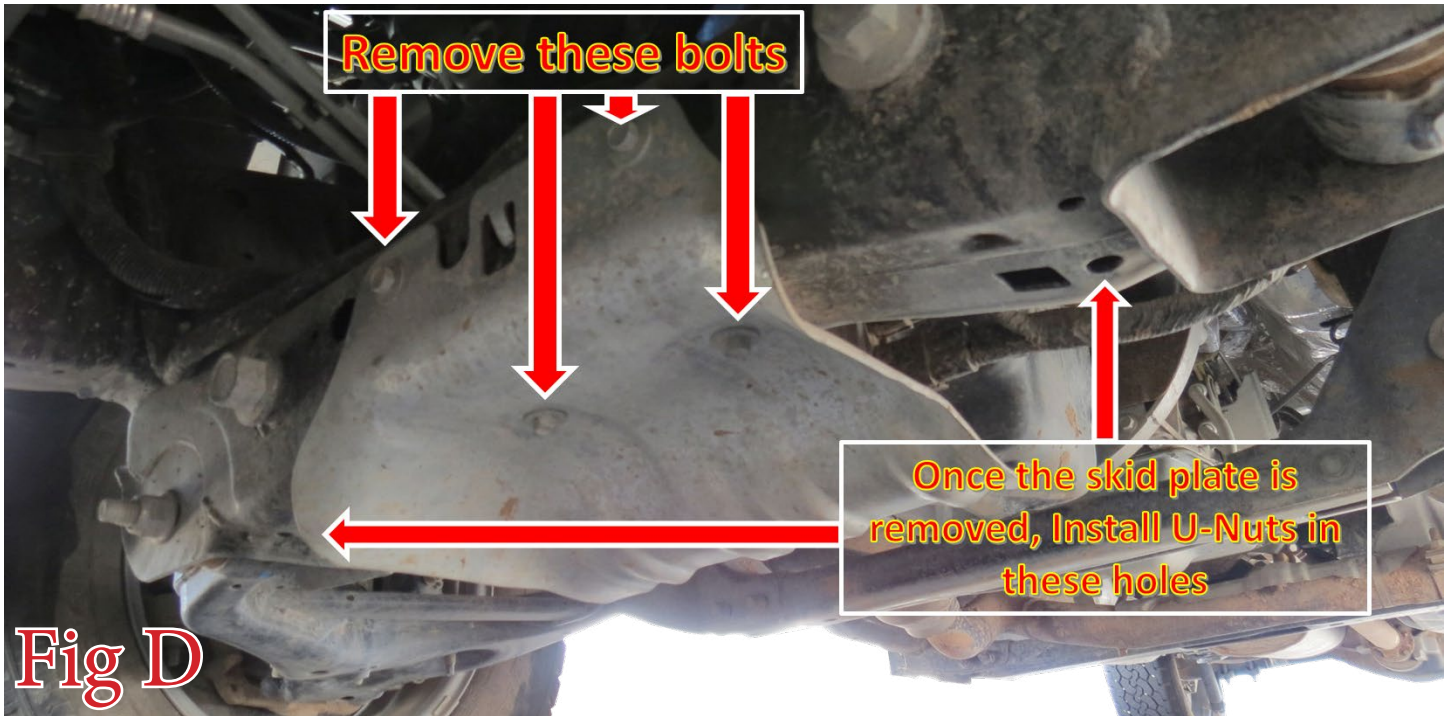
4. Remove the OEM bumper from the vehicle.

Installation:

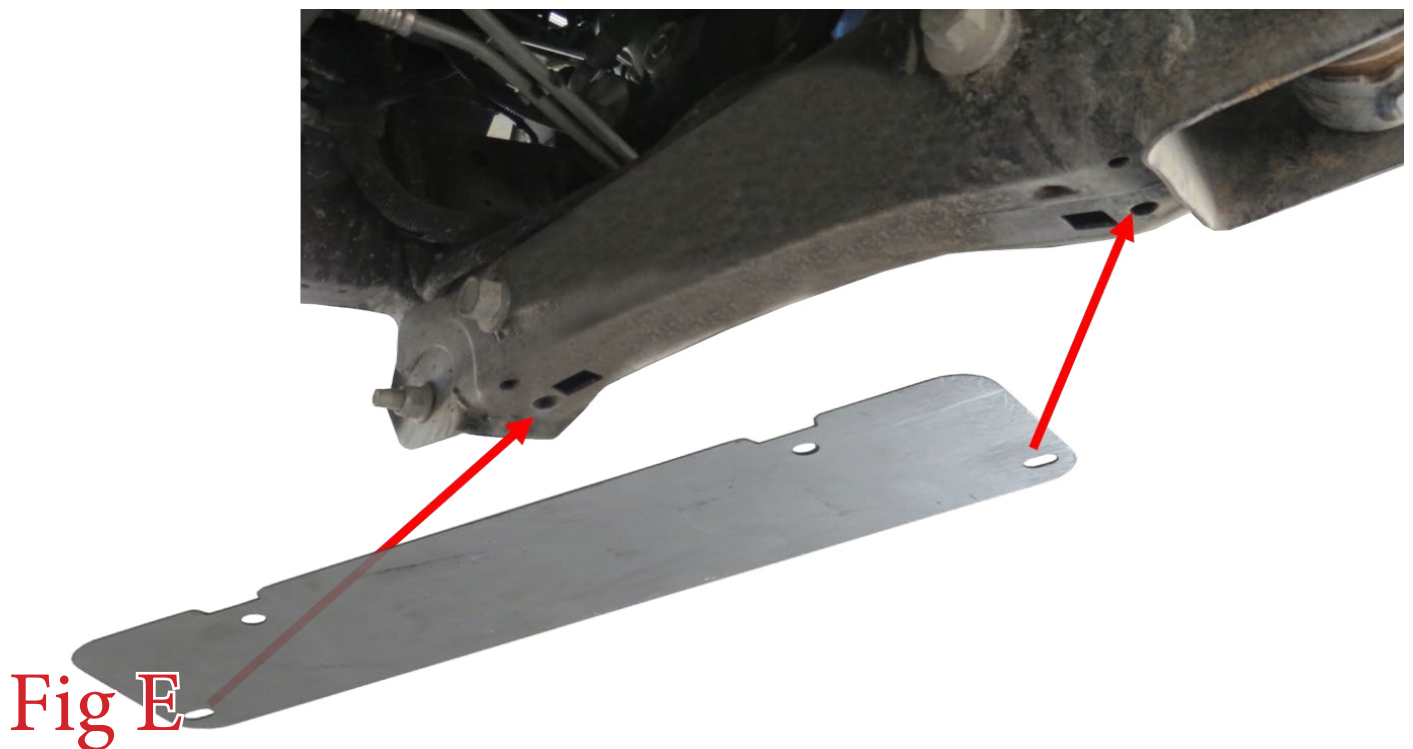
5. Use the supplied 1/4" Bolts (x2), 1/4" Washers (x4), and 1/4" Lock Nuts (x2) to mount the supplied Valance Brackets to the hole you removed the 10mm bolts from in Step 1. Make sure the cutout faces towards the center of the truck and make sure the brackets are positioned so they will be sandwiched by the bumper mounting bolts as the bumper is installed. (Fig C)



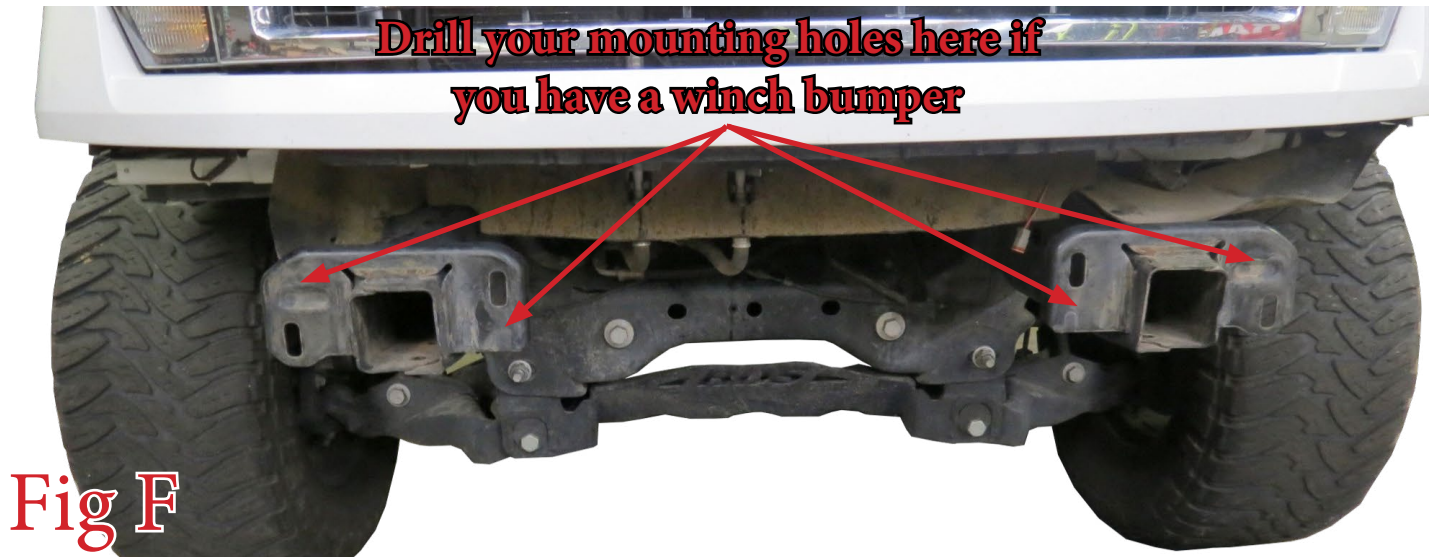
6. If you have any lights or a winch to install on your bumper, now is a good time to do so. Please follow the light/winch manufacturer's guide for mounting/wiring information.
7. Remove the bolts (x4) that hold on the factory skid plate. Then, install the supplied U-Nuts (x2) into the holes specified in (Fig D).



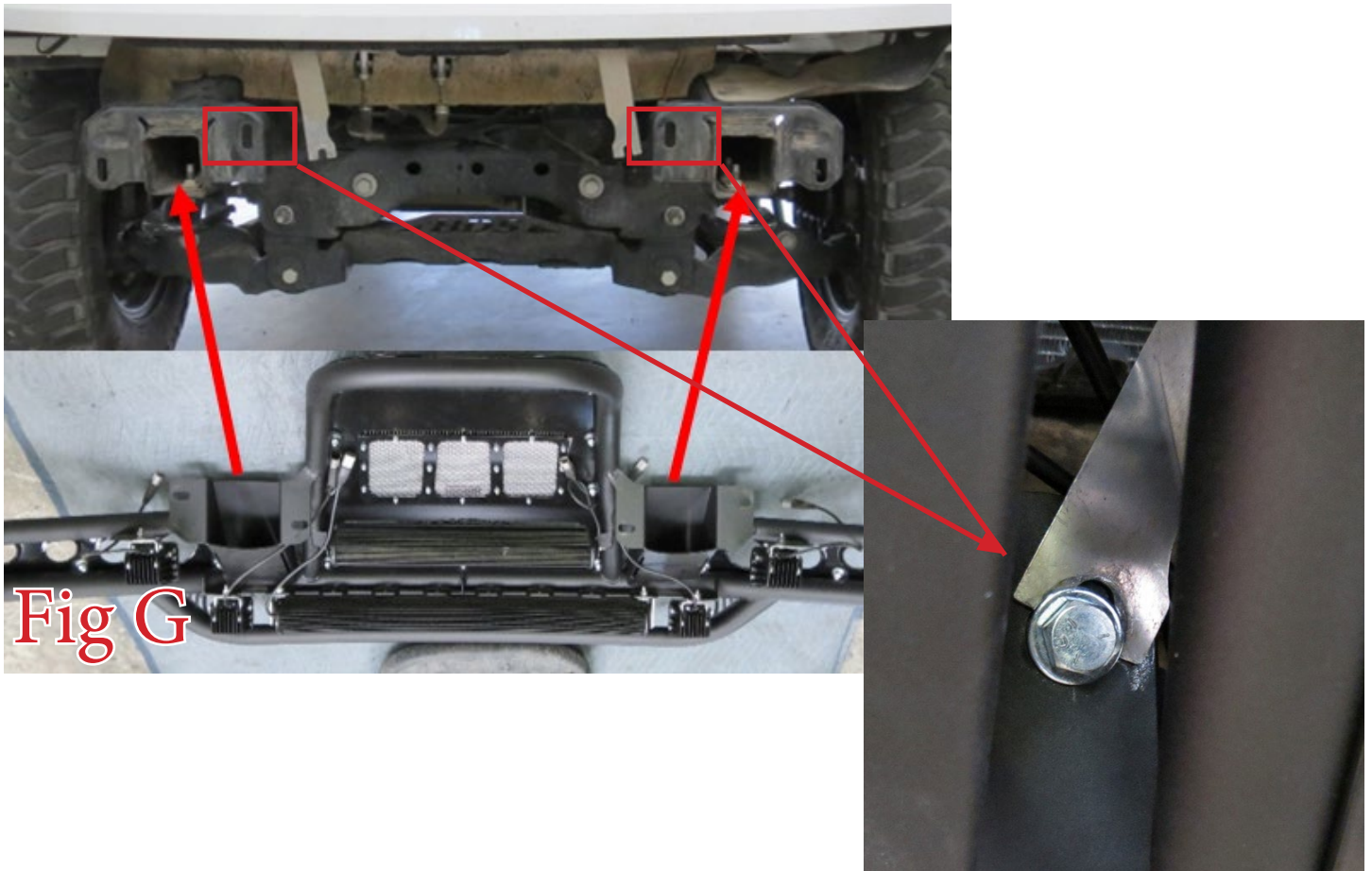
8. Using the supplied 3/8" Bolts (x2) and 3/8" Washers (x2), mount the supplied skid plate bracket to the newly installed U-Nuts. (Fig E)



9. Hold the bumper in place on the frame horns, lining up the 4 mounting holes on the bumper up with the four mounting holes on the frame horns. Then, mark the frame where the remaining four bumper mounting holes line up. Drill the remaining holes with a 1/2" Drill Bit. (Fig F)

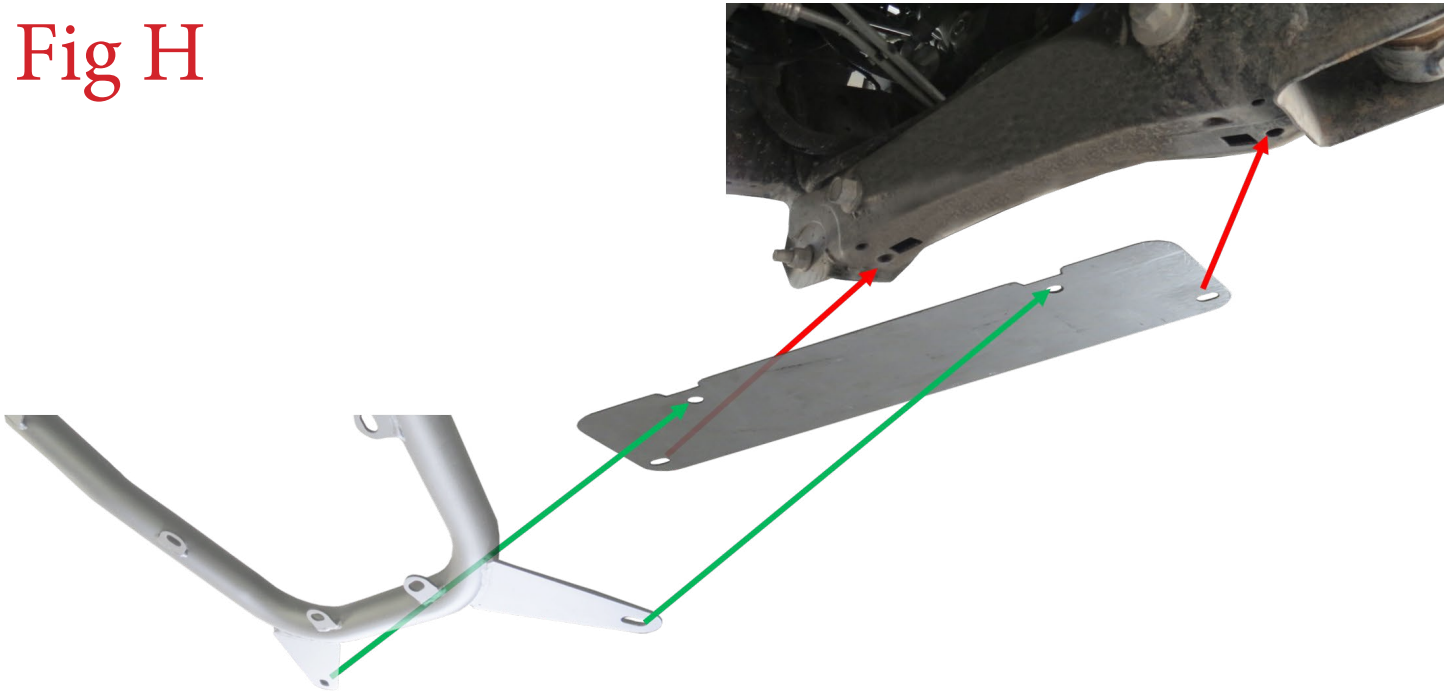


10. Line the mounting holes on your bumper up with the mounting holes on the frame horns. Use the supplied 1/2" Bolts (x8), 1/2" Washers (x16), and 1/2" Lock Nuts (x8) to secure the bumper. Be sure to use the upper/inner bolt to mount the valance brackets as well as the bumper. Leave these bolts loose for now. (Fig G)



11. Mount the lower tabs on your bumper to the skid plate bracket. Use the supplied 1/2" Bolts (x2), 1/2" Washers (x4), and 1/2" Lock Nuts (x2). Leave these bolts loose for now. (Fig H)

Fig H



12. Align your bumper so it is centered left to right and also straight in relation to the valance/grille/headlights. Then, tighten the outer mounting bolts to 70 foot pounds.

13. Align your valance for the final time. Adjust it so that it is straight in relation to the top tube of your bumper. Then, tighten the inner bumper mounting and lower tab bolts to 70 foot pounds.

14. Stand back and enjoy your new ADD Venom™ Front Bumper.

15. Check and re-tighten, if needed, all mounting bolts after 100 miles and periodically thereafter.



For Additional Support or Technical Questions,
Please Call 480-671-0820 or
Email Info@AddictiveDesertDesigns.com