

## Preparation:

- Disconnect the negative battery terminal. Park the vehicle on level ground and set the emergency brake.
- We recommend reading through the installation instructions in whole before performing the work.
- Estimated Installation Time: **3 Hours**

***\*\*This installation requires 2 people for best results\*\****

***\*\*Labor Rates are based on a vehicle with no pre-existing damage.\*\****

## You will need the following tools:

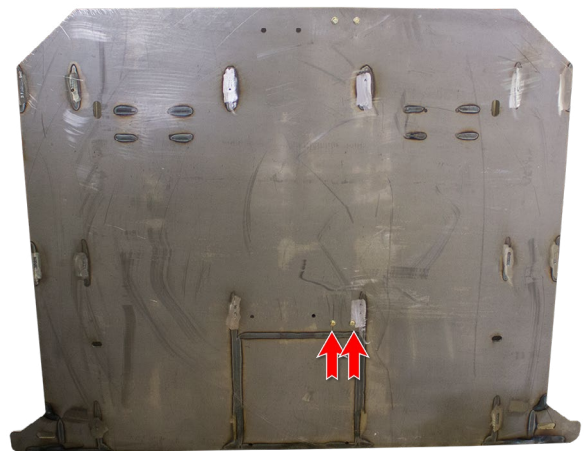
- |                             |                         |                             |
|-----------------------------|-------------------------|-----------------------------|
| - Ratchet                   | - T-50 Torx Socket      | - 3/16" Allen Wrench/Socket |
| - 5/32" Allen Wrench/Socket | - 1/2" Socket or Wrench | - 7/16" Socket & Wrench     |
| - 9/16" Socket              | - 3/4" Socket & Wrench  | - 19mm Socket               |
| - 5mm Allen Wrench/Socket   | - Drill                 | - 1/2" Drill Bit            |
| - 11/32" Drill Bit          |                         |                             |

## Included in Kit:

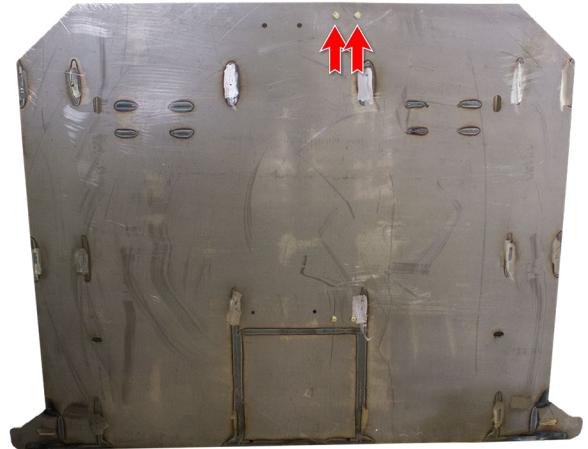
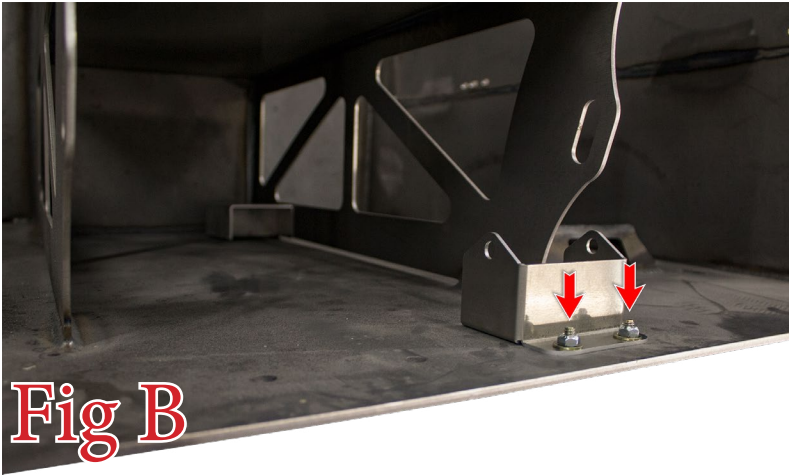
- |   |  |
|---|--|
| <b>4</b> - Hex Head Bolts (M12-1.75 x 110mm)  | <b>4</b> - Spacers (1/2" Long)                 |
| <b>4</b> - Flat Yellow Washers (1/2")         | <b>4</b> - Thread Cutting Bolts (3/8"-16 x 1") |
| <b>6</b> - Hex Head Bolts (1/2"-13 x 1 1/2")  | <b>12</b> - Flat Washers (1/2")                |
| <b>6</b> - Nylon Lock Nuts (1/2"-13)          | <b>14</b> - Button Head Bolts (5/16"-18 x 1")  |
| <b>20</b> - Flat Washers (5/16")              | <b>14</b> - Nylon Lock Nuts (5/16"-18)         |
| <b>6</b> - Button Head Bolts (1/4"-20 x 3/4") | <b>12</b> - Flat Washers (1/4")                |
| <b>6</b> - Nylon Lock Nuts (1/4"-20)          |  |

## Installation:

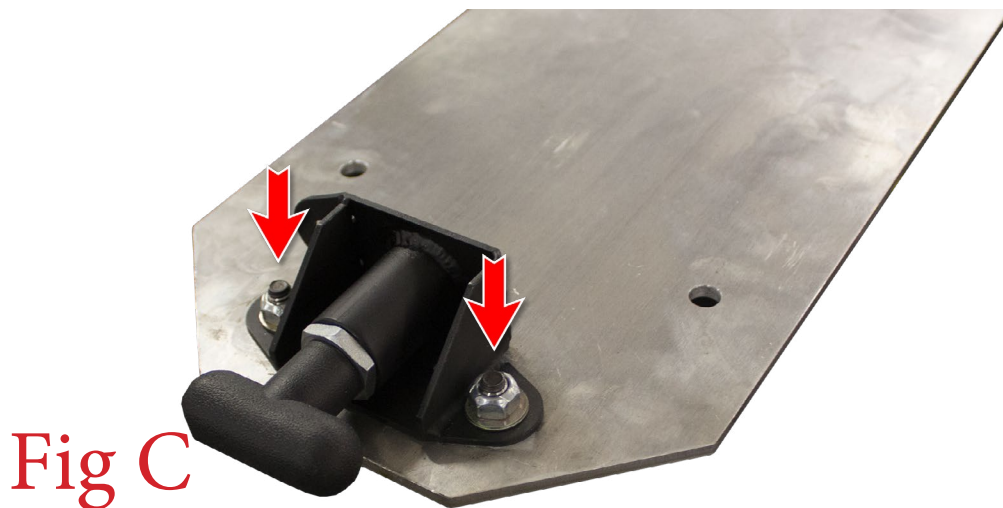
1. If you have a Jack Kit to install on your bed cage, follow Steps (2-7). If not, skip ahead to Step (8).
2. Find the receiving end of the Jack Handle Holder within the Jack Kit. Then, install this piece into its mounting holes within the center opening of the bed cage using the supplied 5/16" Bolts (x2), 5/16" Washers (x2) and 5/16" Nuts (x2). Make sure to install the bolts with the head on the bottom of the bed cage and the nut on the inside of the bed cage. Torque these bolts to 13 foot pounds. (Fig A)



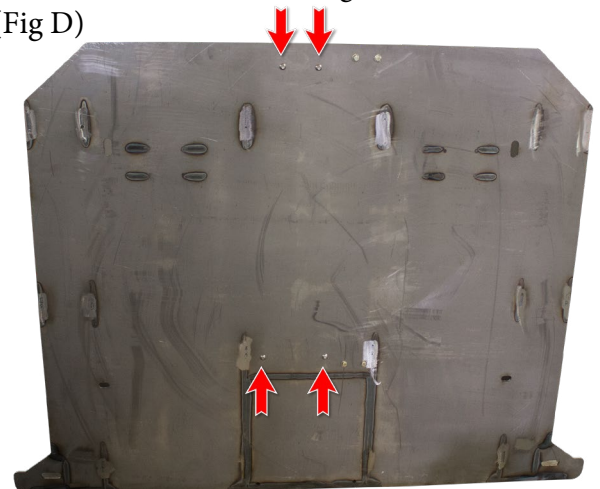
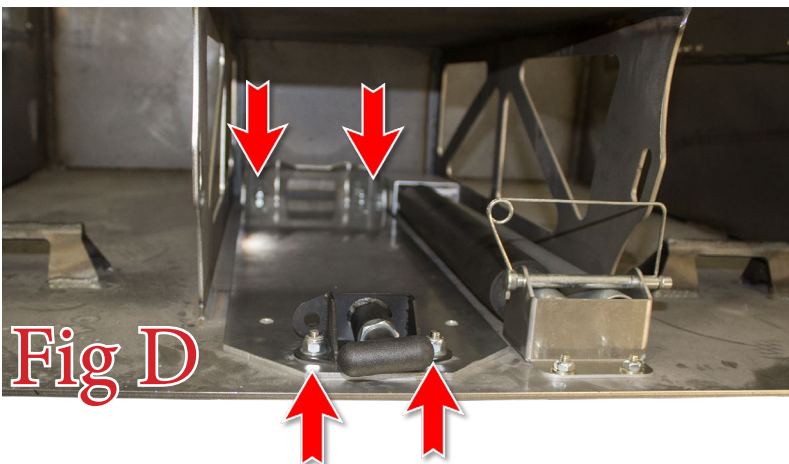
3. Find the second half of the Jack Handle Holder within the Jack Kit. Then, install this piece to its set of mounting holes within the center opening of the bed cage using the supplied 5/16" Bolts (x2), 5/16" Washers (x2), and 5/16" Nuts (x2). Make sure to install the bolts with the head on the bottom of the bed cage and the nut on the inside of the bed cage. Torque these bolts to 13 foot pounds. (Fig B)



4. Remove the two mounting bolts for the Jack Release. (Fig C)

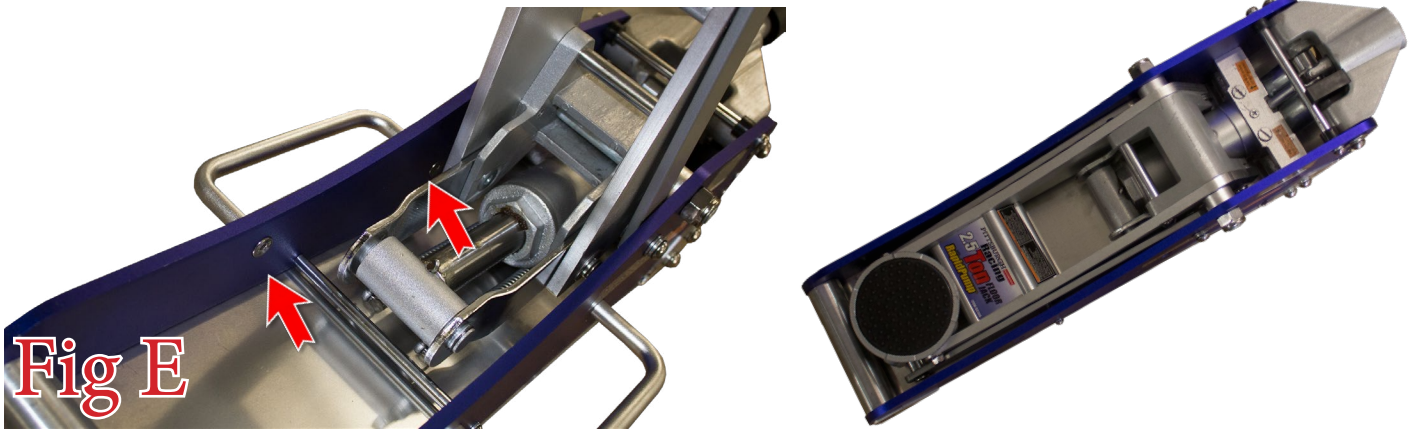


5. Set the Jack Plate in place on the bed cage. Use the supplied 5/16" Bolts (x4), 5/16" Washers (x4), and 5/16" Lock Nuts (x4) to hold it in place. Make sure to install the bolts with the button heads facing down and the nut on the inside of bed cage. Torque these bolts to 13 foot pounds. (Fig D)

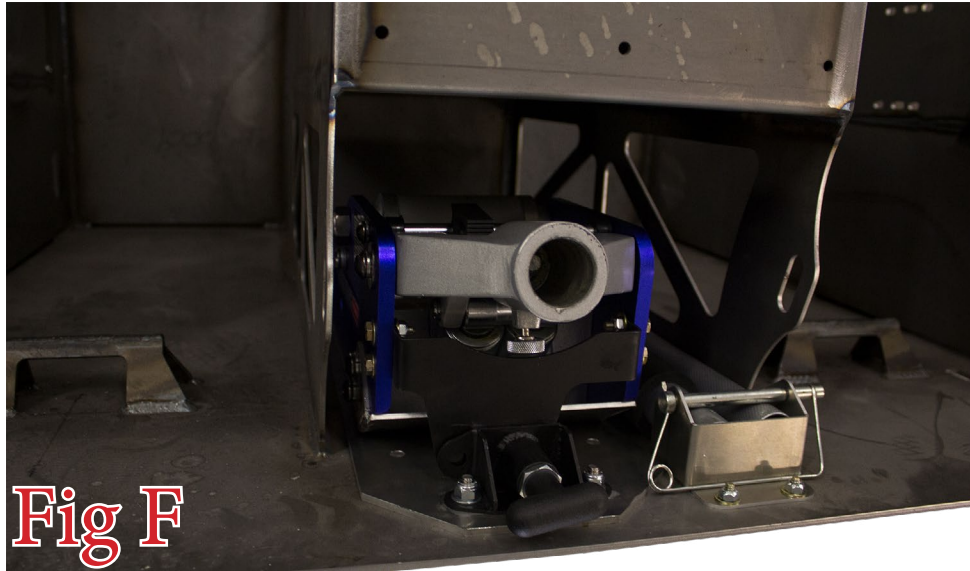




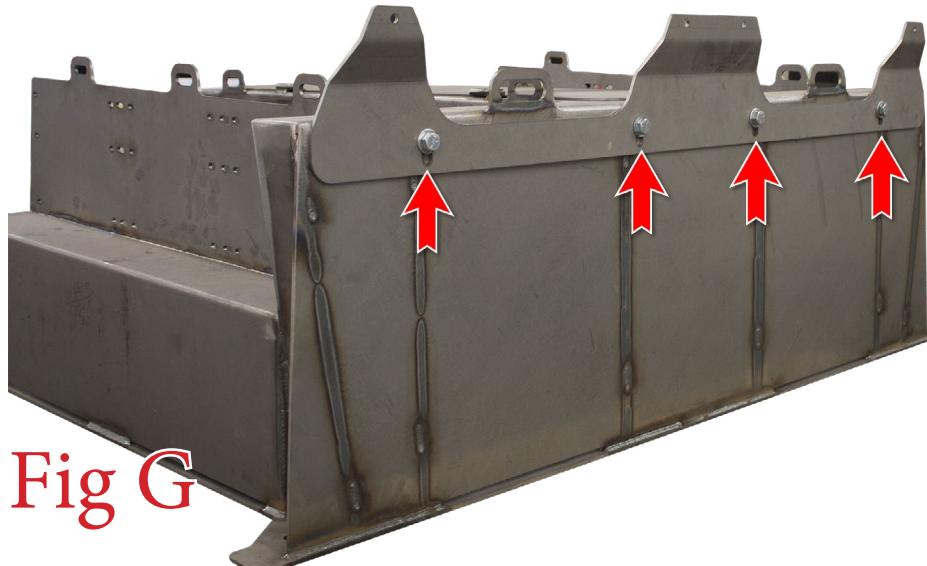
6. Using a 5mm Allen Wrench or Socket, remove both Jack Handles. (Fig E)



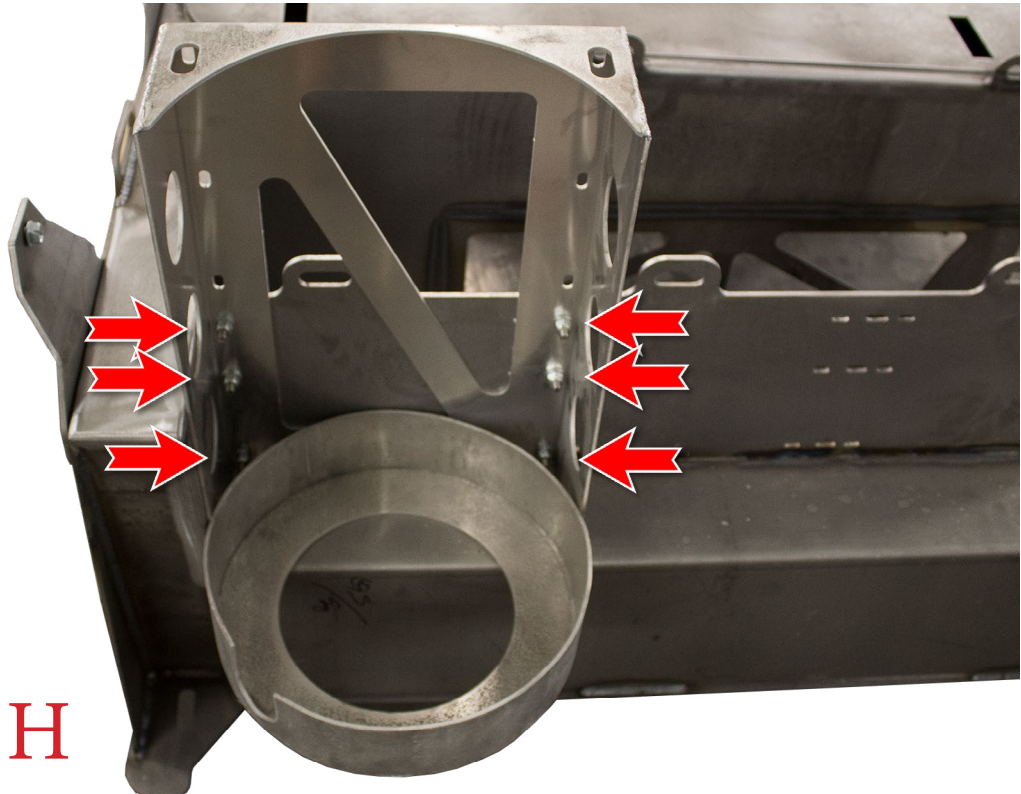
7. You may now put your jack and jack handles in the bed cage. (Fig F)



8. If you have fiberglass bedsides and a chase rack, follow this step. If not, please skip to the next step. Find the chase rack support piece. Mount it to the back of the bed cage as shown in (Fig G). Use the supplied 1/2" Bolts (x4), 1/2" Washers (x4), and 1/2" Lock Nuts (x4). Once all bolts are loosely installed, torque them to 70 foot pounds.

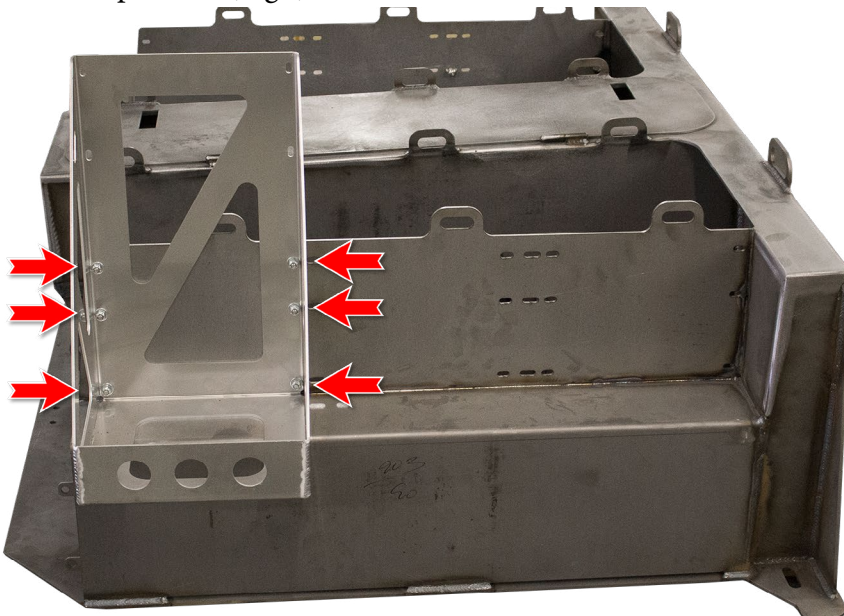


9. If you have Dump Can Mounts to install on your bed cage, follow this step. If not, skip to the next step. Set the Dump Can Mounts in the desired position. Line the mounting holes on the Can Mounts up with the mounting holes on the bed cage. Then, use the supplied 5/16" Bolts (x6), 5/16" Washers (x12), and 5/16" Lock Nuts (x6) to secure the Can Mounts to the cage. Install these bolts with the bolt head facing the spare tire slots. Once all bolts are loosely installed, torque them to 13 foot pounds. (Fig H)



**Fig H**

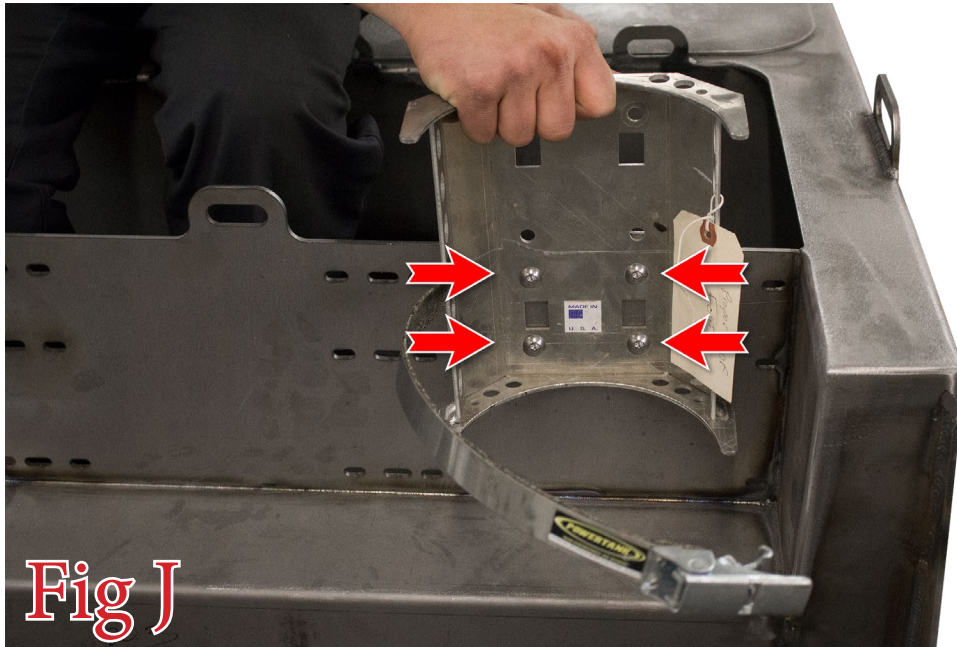
10. If you have Square Jug Mounts for your bed cage, follow this step. If not, skip to the next step. Set the Square Jug Mounts in the desired position. Line the mounting holes on the Jug Mounts up with the mounting holes on the bed cage. Then, use the supplied 1/4" Bolts (x6), 1/4" Washers (x12), and 1/4" Lock Nuts (x6) to secure the Jug Mounts to the cage. Install these bolts with the bolt head facing the spare tire slots. Once all bolts are loosely installed, torque them to 7 foot pounds. (Fig I)



**Fig I**



11. If you have a CO2 power tank for your bed cage, follow this step. If not, skip to the next step. Set the CO2 Tank Mount in the desired position. Line the mounting holes (x4) on the tank mount up with the mounting holes on the bed cage. Use the mounting hardware that came with the power tank to hold the mount in place. (Fig J)



12. Using a T-50 Torx bit, remove the front 4 bed bolts. (Fig K)



13. Set the supplied 1/2" Spacers (x4) over the bed bolt holes. (Fig L)



14. Set the bed cage in place. Line the mounting holes on the bed cage up with the 4 bed bolt holes. Then, use the supplied M12 Bolts (x4) and Yellow Washers (x4) to hold the bed cage in place. Once all bolts are loosely installed, go back and torque them to factory torque spec. (Fig M)

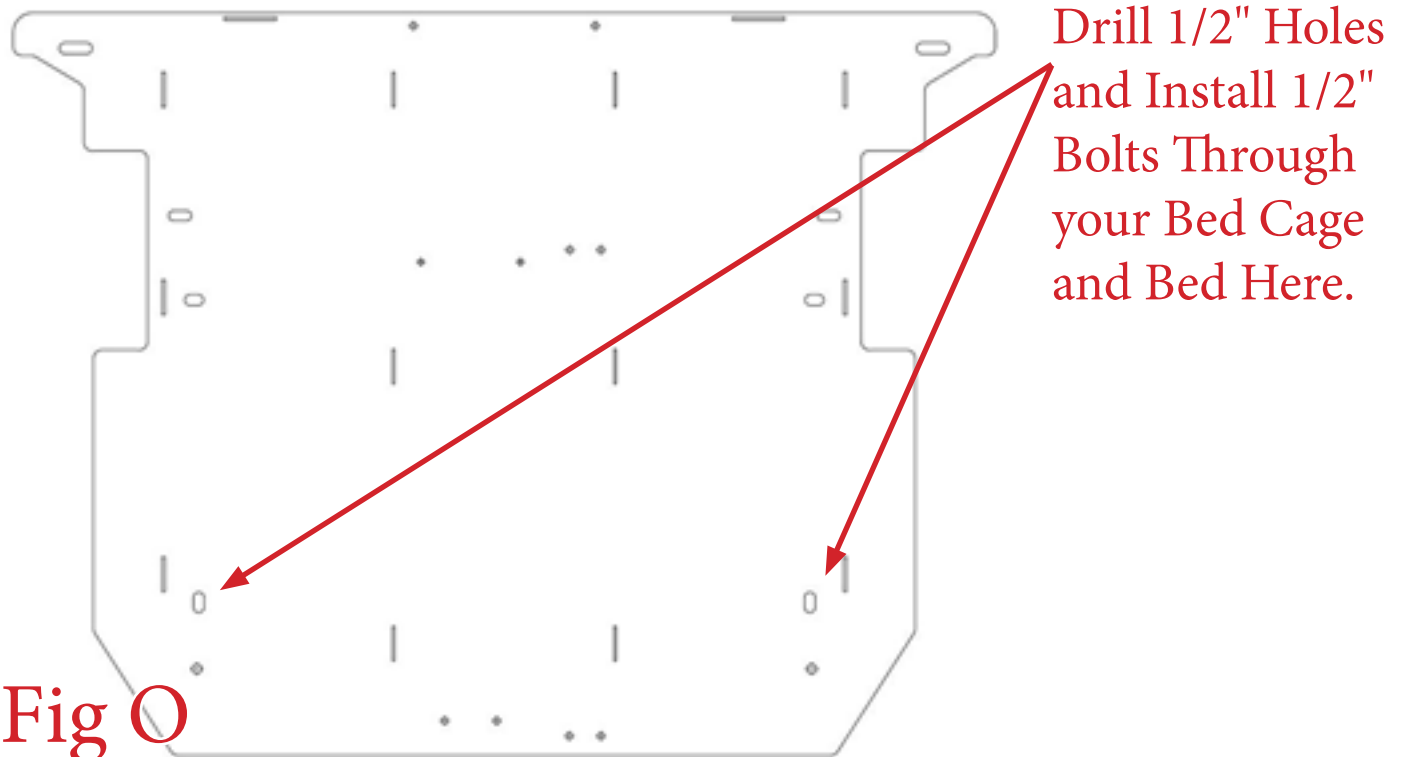




15. If you have fiberglass bed sides and a chase rack, please follow this step. If not, please skip to the next step. Adjust the Chase Rack Support Piece so that the upper holes are centered to the Chase Rack's lower tube. Then, use the support piece as a template to drill (11/32" Drill Bit) the 4 holes into the chase rack tube where the plate meets it. Once the holes are drilled, install the supplied 3/8" Thread Cutting Bolts into the newly drilled holes. (Fig N)



16. In the rear most set of mounting holes on the bed cage, drill a 1/2" hole through your truck's bed. Then install the supplied 1/2" Bolts (x2), 1/2" Washers (x4), and 1/2" Lock Nuts (x2) through the bed cage and truck bed. Torque these bolts to 70 foot pounds. (Fig O)



17. Stand back and enjoy your new ADD Bed Cage.
18. Check and re-tighten, if needed, all mounting bolts after 100 miles and periodically thereafter.