

## Preparation:

- Disconnect the negative battery terminal. Park the vehicle on level ground and set the emergency brake.
- We recommend reading through the installation instructions in whole before performing the work.
- When button head bolts are being used, install the supplied washer on the nut side. Then, hold the bolt stationary and only turn the nut to tighten. Do not turn the bolt to tighten hardware assembly, unless otherwise noted.
- Estimated Installation Time: **.5 Hours for Installation**

### **1 Additional Hour to Wire Lights**

***\*\*This installation requires 2 people for best results\*\****

***\*\*Labor Rates are based on a vehicle with no pre-existing damage. Wiring labor is based on a standard wiring procedure with light switches installed in an easily accessible location. Custom light triggering or switch mounting location will result in a greater labor charge.\*\****

## You will need the following tools:

- Ratchet

- 2 - 9/16" Wrenches

- 2 - 3/4" Wrenches

## Included in Kit:

**2** - Hex Head Bolts (1/2"-13 x 1 1/2")

**2** - Nylon Lock Nuts (1/2"-13)

**4** - Flat Washers (3/8")

**2** - Rubber Trim (6" Long)

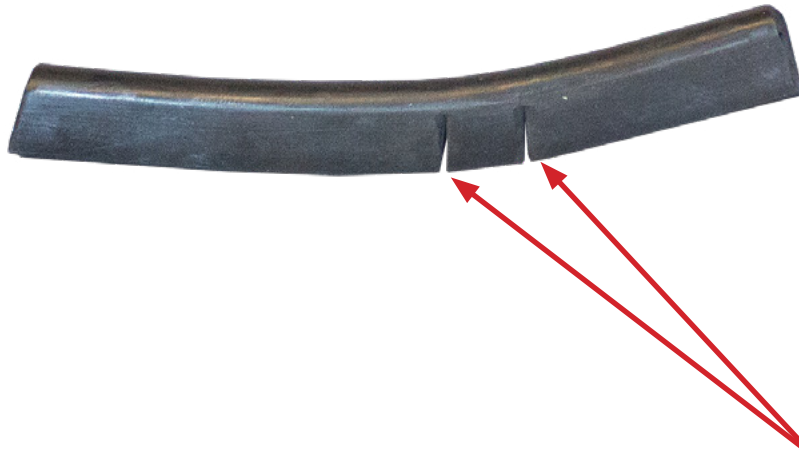
**4** - Flat Washers (1/2")

**2** - Hex Head Bolts (3/8"-16 x 1 1/4")

**2** - Nylon Lock Nuts (3/8"-16)

## Installation:

1. Find the supplied pieces of rubber trim. Cut two relief cuts in the those pieces as shown. **Do not cut all the way through the trim.** (Fig A) Then, install the supplied trim onto the light hoop as shown in (Fig A). If your rubber trim piece hangs off the edge of the light bar hook, trim off the excess rubber.



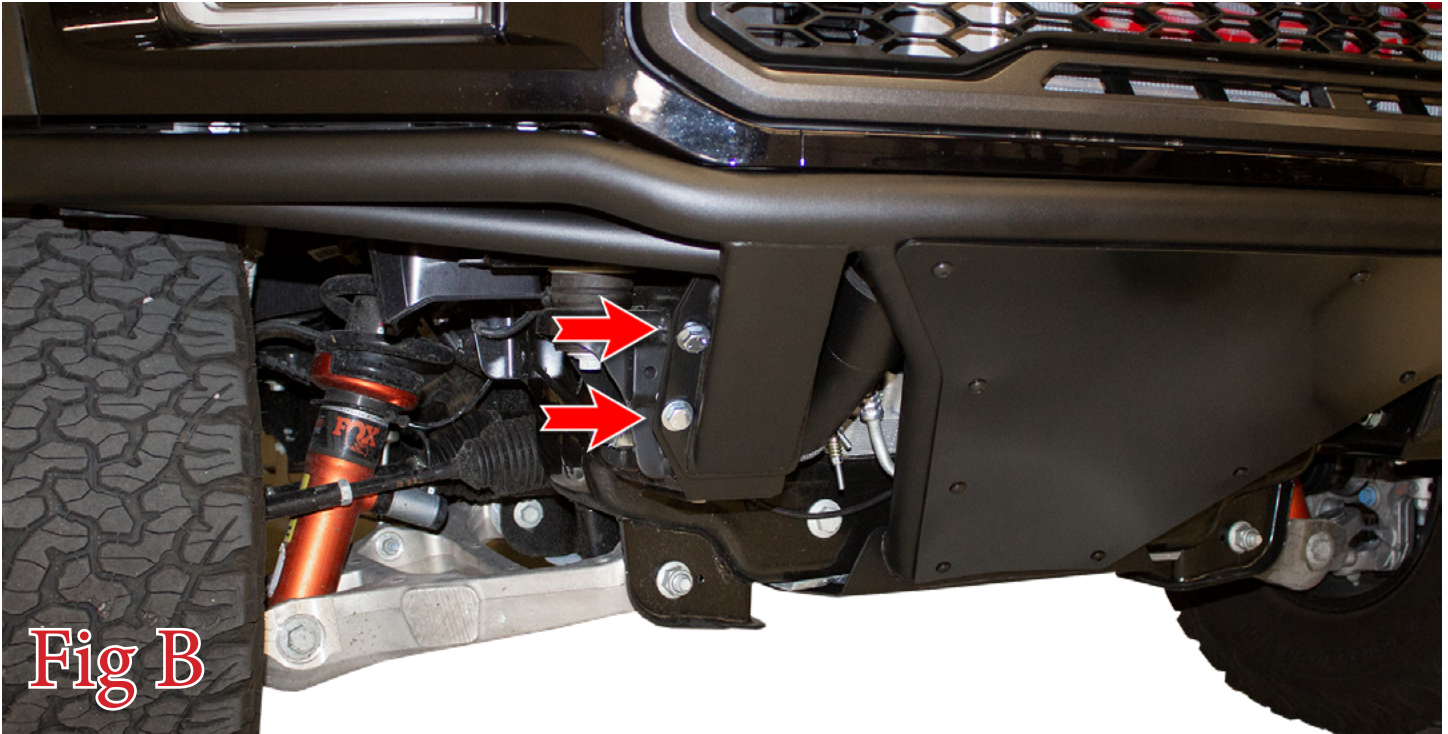
**Cut relief cuts here before installing the rubber trim**



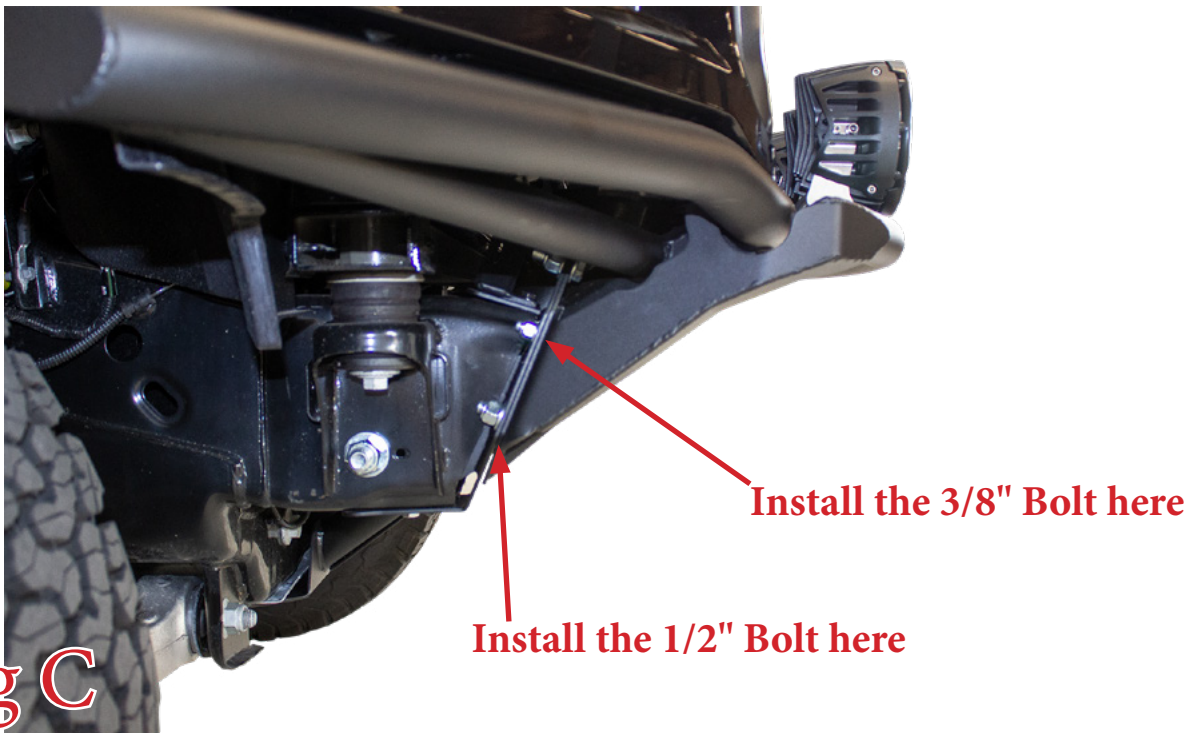
**Install the rubber trim here on both sides of the bar**

**Fig A**

2. Remove the two bumper mounting bolts (per side) referenced in (Fig B).



3. Set the Light Hoop in place on the vehicle. Then, install the supplied 1/2" Bolts (1 per side), 1/2" Washers (2 per side), and 1/2" Lock Nuts (1 per side) in the lower light hoop mounting holes. Install the supplied 3/8" Bolts (1 per side), 3/8" Washers (2 per side), and 3/8" Lock Nuts (1 per side) in the upper light hoop mounting holes. Once all bolts are loosely installed, torque the 3/8" Bolts to 30 foot pounds and the 1/2" Bolts to 70 foot pounds. (Fig C)





4. Install any lights you have onto the light hoop now. Follow the light manufacturer's guide for mounting and wiring information.
5. Stand back and enjoy your new ADD PRO™ Add-On Light Hoop.
6. Check and re-tighten, if needed, all mounting bolts after 100 miles and periodically thereafter.

