

### Preparation:

- Disconnect the negative battery terminal. Park the vehicle on level ground and set the emergency brake.
- We recommend reading through the installation instructions in whole before performing the work.
- Estimated Installation Time: **2 Hours**  
**\*\*This installation requires 2 people for best results\*\***

### You will need the following tools:

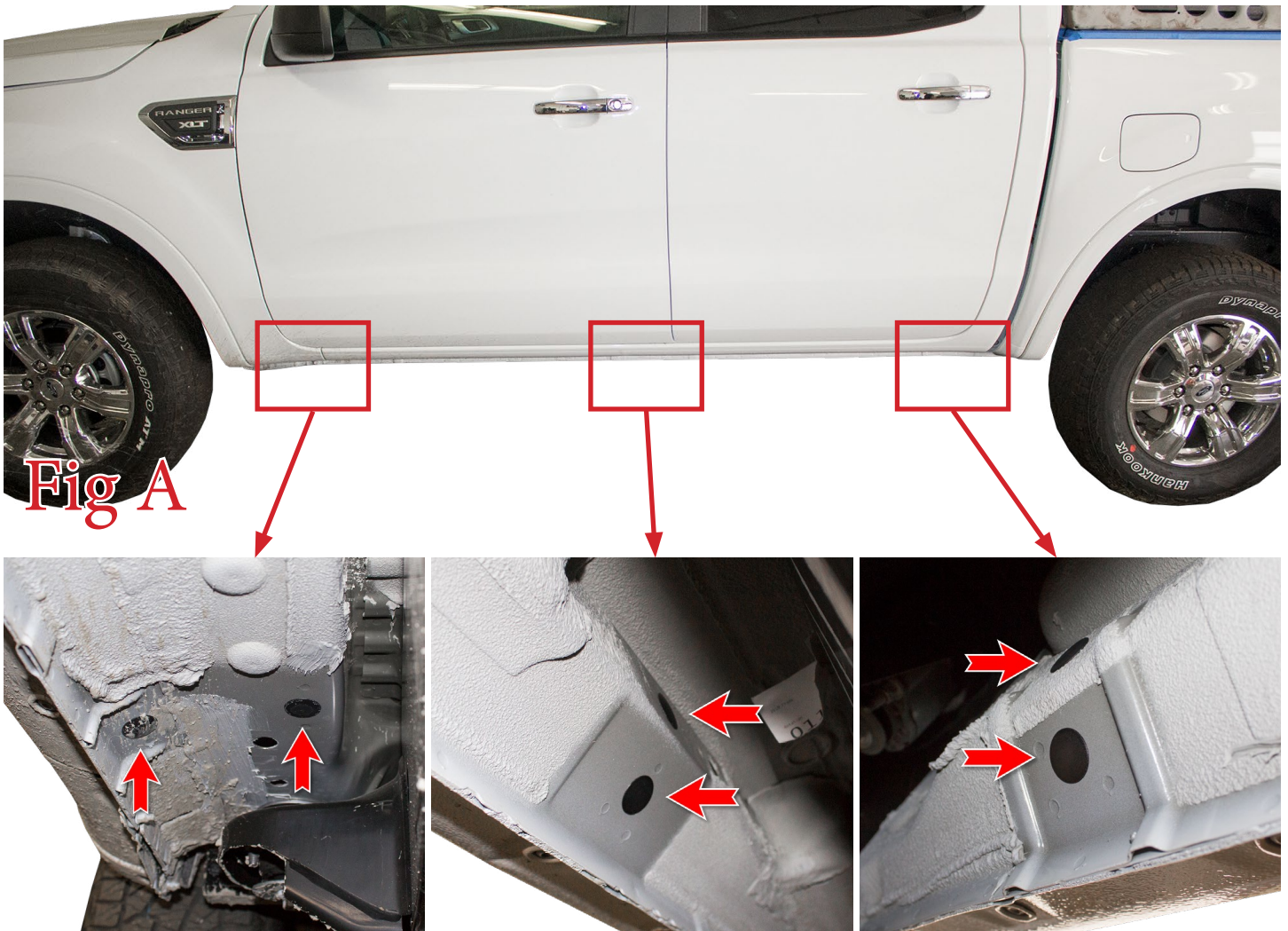
- Ratchet
- 17mm Socket
- Wire Crimpers
- Drill
- 1/2" Drill Bit

### Included in Kit:

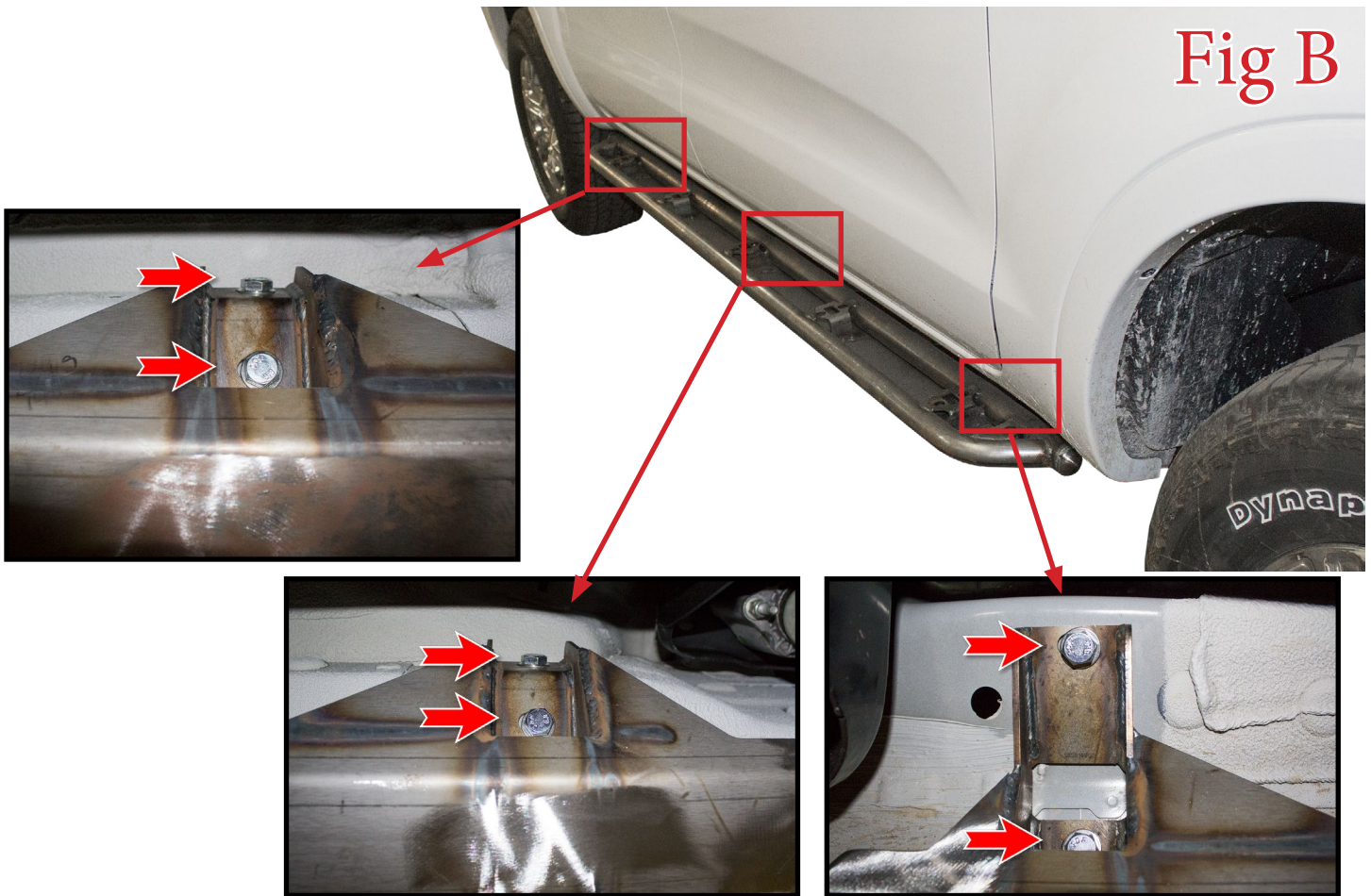
- 12 - Hex Head Bolts (M10-1.50 x 30mm)
- 12 - Flat Washers (M10)
- 1 - LED Light Strip Harness

### Installation:

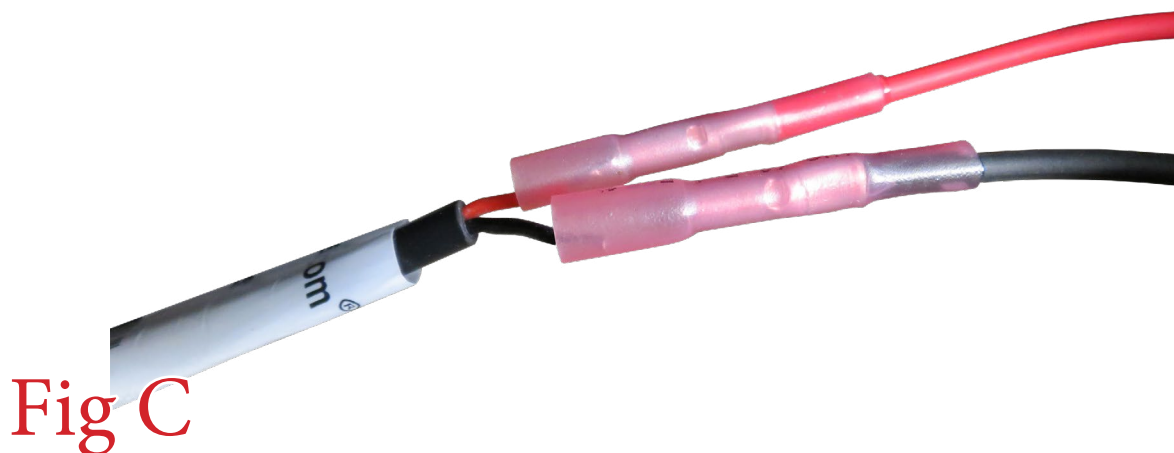
1. Pull the six plastic body plugs (per side) on the underside of the truck's body. (Fig A)



2. Set one of the side steps in place. Use the supplied M10 Bolts (x6) and M10 Washers (x6) to secure the step to the vehicle. Then, repeat this step on the other side of the vehicle. (Fig B)



3. Lay out the supplied harness. Send the harness through the transmission tunnel so that the single end is on the passenger side and the double end is on the driver side. Connect the red and black wires from the single end to the black and red wires from the passenger side step. (Fig C)



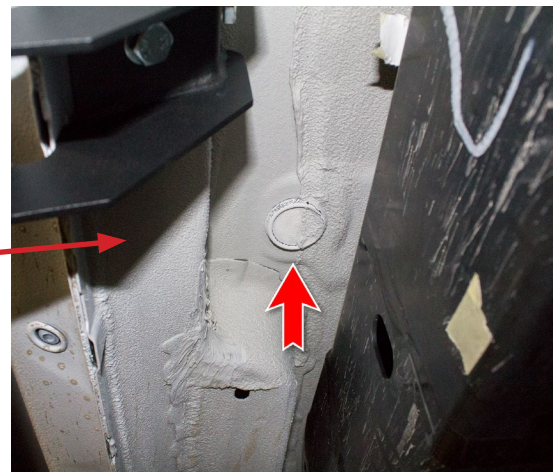
4. On the driver side of the vehicle, connect the red and black wires with butt connectors to the red and black wires on the driver side step just as you did on the passenger side in Step 3.
5. Open the driver side door and remove the two kick panels as shown in (Fig D). There are no tools required for this step, they simply pull off by hand.

**Before**

**After**



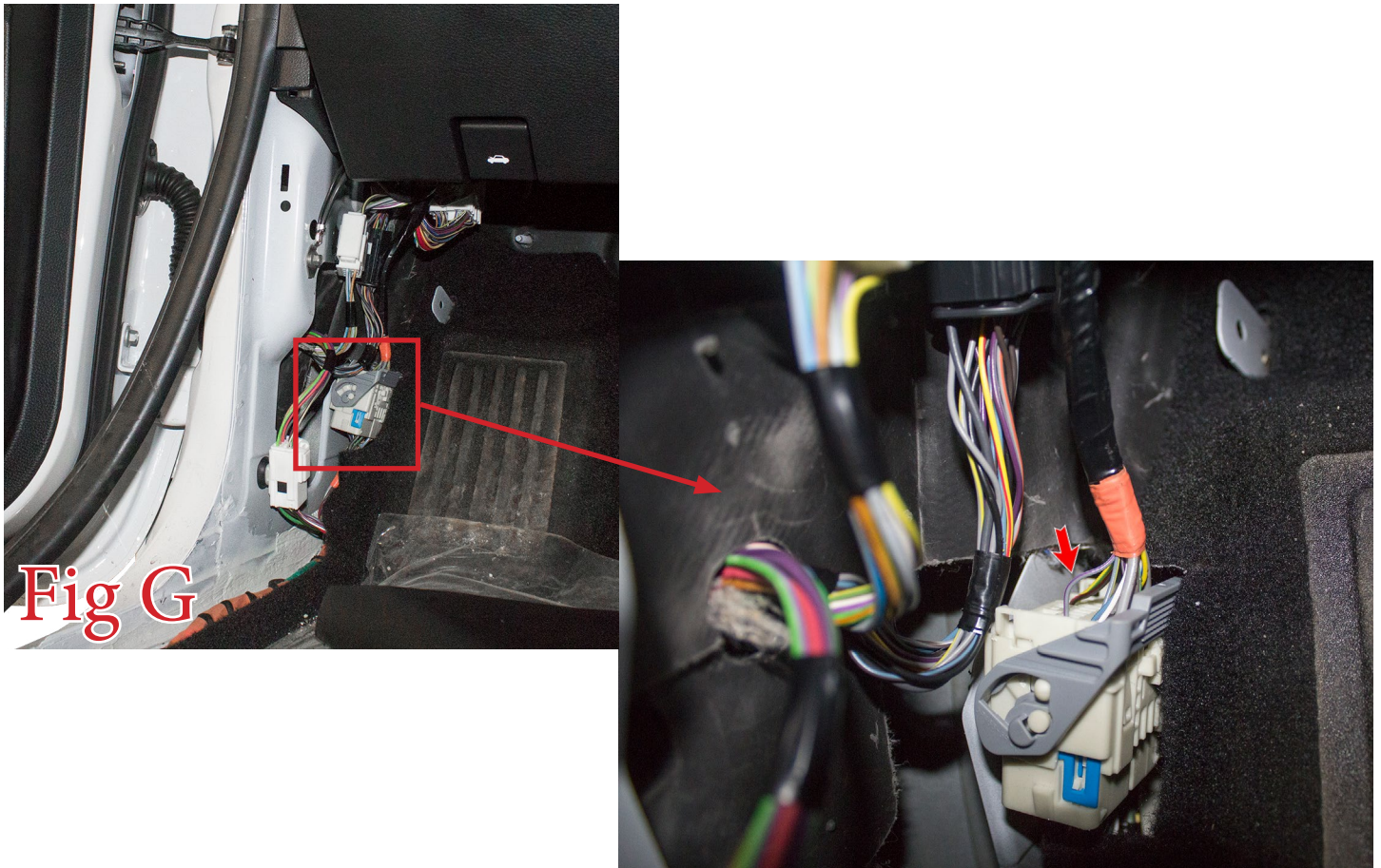
6. From underneath the truck, find the body plug referenced in (Fig E). Then, drill a hole through that plug large enough to pass the wire harness through. Pass the remaining two wires of the wire harness through this hole, into the body of the vehicle.

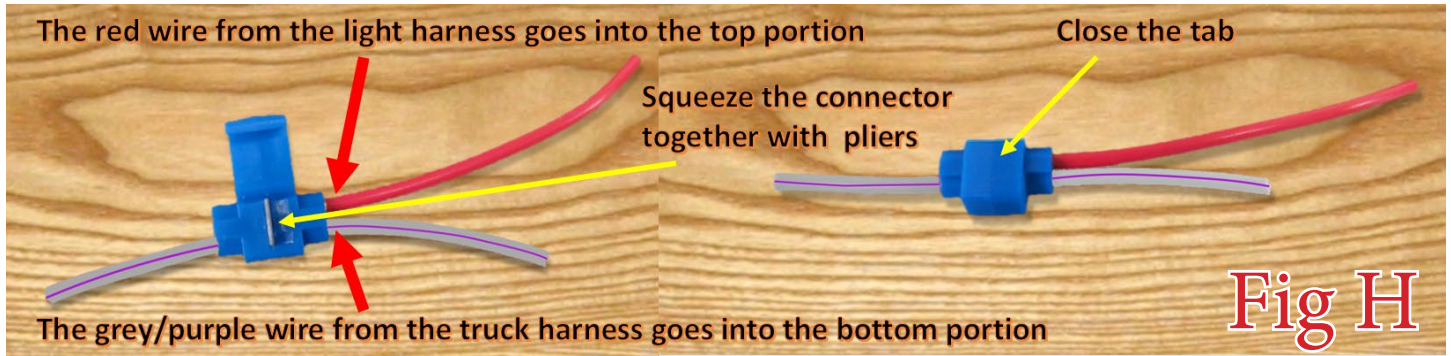


7. Mount the black wire with an eyelet attached to the end of it to the ground location shown in (Fig F).



8. Attach the final red wire with the blue tap connector to the grey with a purple stripe wire referenced in (Fig G). (Fig H) also shows how the tap connector works.





9. Open your door and make sure the side step lights turn on with the dome light.
10. Stand back and enjoy your new ADD Rock Slider™ Side Steps.
11. Check and re-tighten, if needed, all mounting bolts after 100 miles and periodically thereafter.

